

NORBU
PRIVATE VILLA



NORBU

PRIVATE VILLA

SUKYF & ARCHITECTS



ARCHITECTURE BY

FELIPE GONZALEZ

RAHAYU SITHA

MIKA MUKHTA

ERWIN KARTHANA

INTERIOR BY

ANN MARIYA GEOGY

WANGSA SWANDEWI

OKTAVIRA PARAMITA

TEXT BY

NICOLAS GONZALEZ

ILLUSTRATION BY

KADEK ARIYASA

AYU SRI SUJATI

WANGSA SWANDEWI

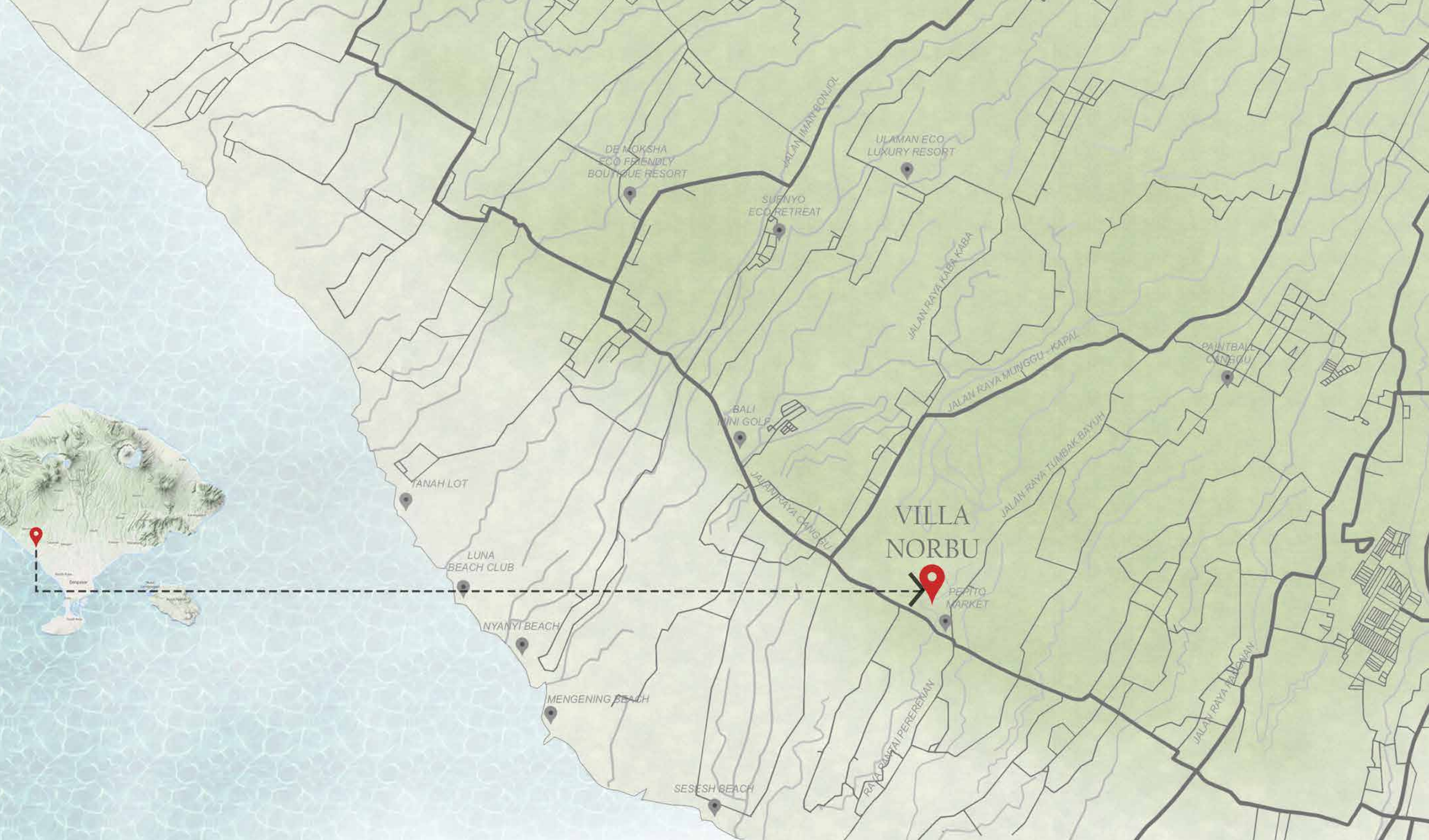
CONTENT

CREDITS.....	06
CONTENT.....	07
WELCOME TO VILLA NORBU.....	09
LOCATION.....	13
SITE PLAN.....	17
THE VILLA.....	21
LANDSCAPE.....	85
SUKYF ARCHITECTS.....	91

WELCOME TO
VILLA NORBU



LOCATION



SITE PLAN



THE VILLA





VIEW | VILLA NORBU

Villa Norbu
1341 sqm

Sukyf Architects
Felipe Gonzalez

Tumbak Bayuh

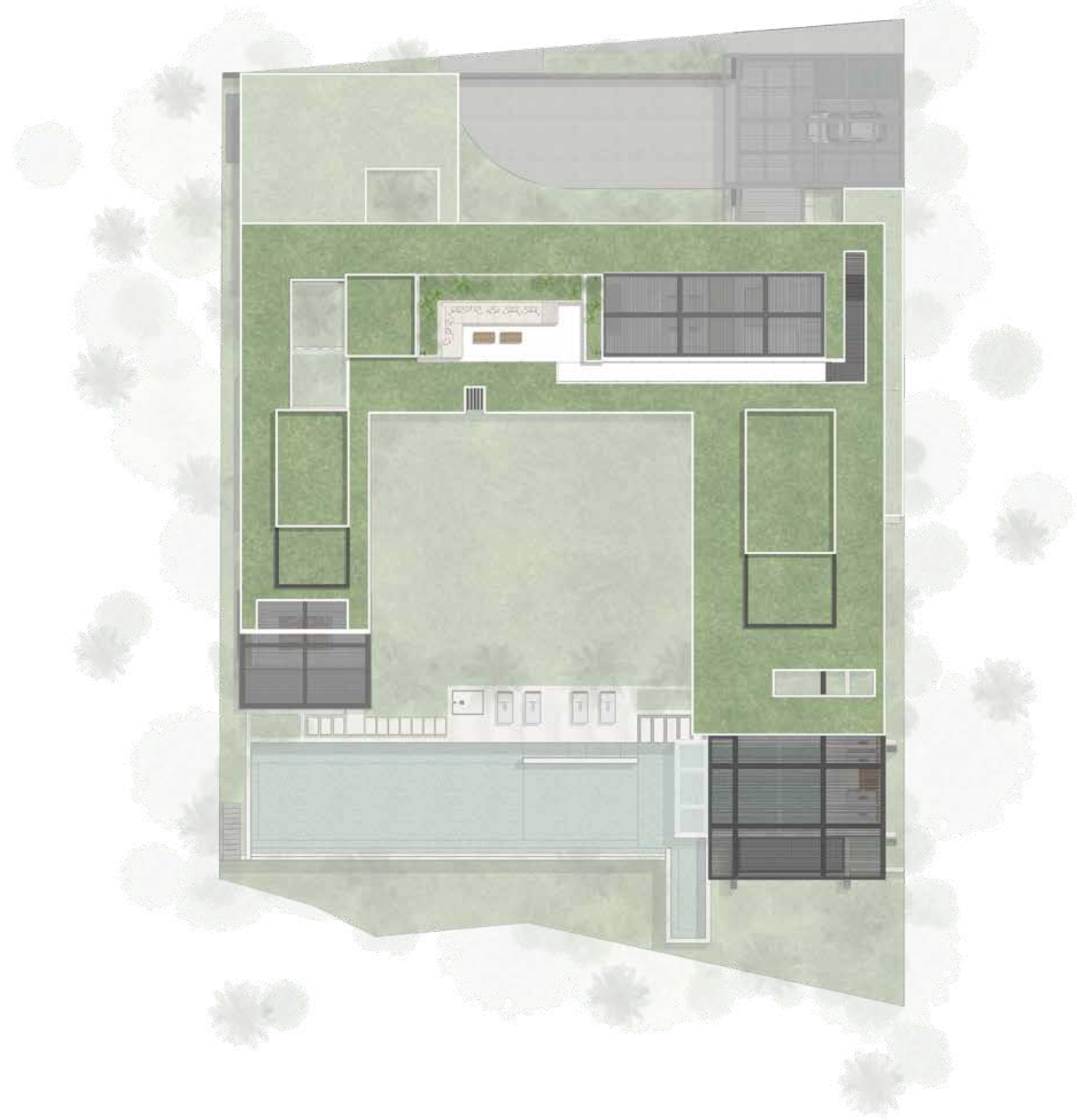
Nestled in Pererenan, Bali, lies a hidden gem that effortlessly marries the city's energetic pulse with the serenity of a secluded retreat. This enchanting villa offers a haven of tranquility, overlooking picturesque rice fields that dance in the soft tropical breeze. Pererenan, compared to Canggu, is renowned for its calm energy, eclectic culture, and dynamic atmosphere. It's a place where modernity collides with tradition, creating a tapestry of experiences for visitors. This villa emerges as an oasis, providing an escape from the hustle and bustle without sacrificing convenience. One of its most enchanting features is the unobstructed view of the sprawling rice fields, where the panorama becomes a living canvas from sunrise to moonlit nights.



VIEW | ENTRANCE

ENTRANCE | Stepping into the gated community, a grand driveway unfolds, guiding you toward the villa with a sense of anticipation and wonder. An enchanting garden, meticulously landscaped with vibrant tropical flora, lines the path, culminating in a majestic doorway that warmly greets you into the house. Flanked by two beautiful, towering trees, this grand entrance sets the tone for the elegance and tranquility that awaits within. The large wooden doors, adorned with intricate carvings, swing open to reveal a breathtaking panorama that encompasses the house's living areas, dining room, kitchen, and inviting pool. As you cross the threshold, your senses are immediately captivated by the seamless integration of indoor and outdoor spaces, inviting you to immerse yourself in the harmonious blend of luxury and nature. The soft rustling of leaves and the gentle trickle of water from nearby fountains enhance the ambiance, creating a serene and welcoming environment that promises relaxation and comfort from the very first step.

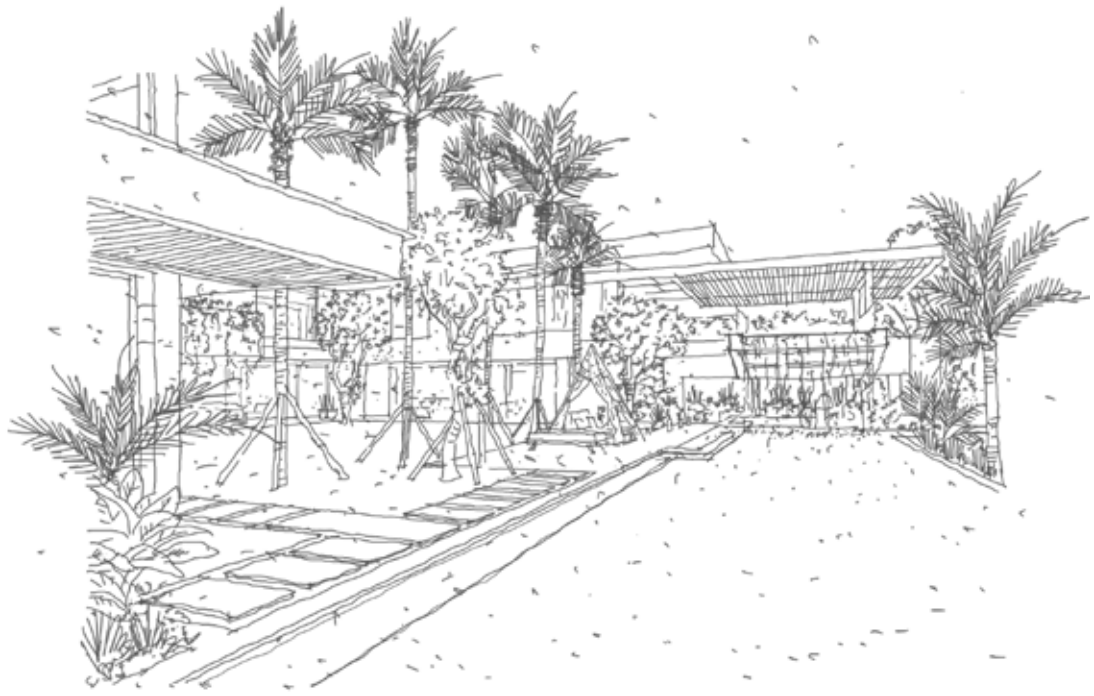












MAIN GARDEN | The landscaping design effortlessly blurs the boundaries between the interior and the exterior, fostering a seamless continuity. Lush greenery cascades from the surrounding jungle, settling into the meticulously curated garden spaces both inside and outside the villa. Planter boxes, both inside and outside, act as miniature gardens, infusing every corner of the villa with a jungle ambiance. Brimming with vibrant tropical flora, they introduce diverse textures, vivid colors, and exotic scents. The landscaping design incorporates natural materials such as stone and wood, offering a grounding contrast to the vibrant foliage.

VIEW | MAIN GARDEN AREA





POOL | The main pool stands as the centerpiece of the entire house, offering a stunning focal point before the extravagant rice paddies. Spanning the whole horizon of the villa, the pool stretches an impressive 25 meters, creating a visual symphony of water and landscape. A captivating waterfall effect cascades from the master bedroom pool upstairs, adding a dynamic element to the serene setting. Directly beneath this waterfall, a glass panel embedded in the pool provides an enchanting underwater view from the sunken area, allowing for a unique and tranquil relaxation experience. To the right, the pool extends gracefully over the rice paddies, offering an unparalleled vista that blends the elegance of the villa with the natural beauty of the surrounding landscape.







VIEW | LIVING ROOM



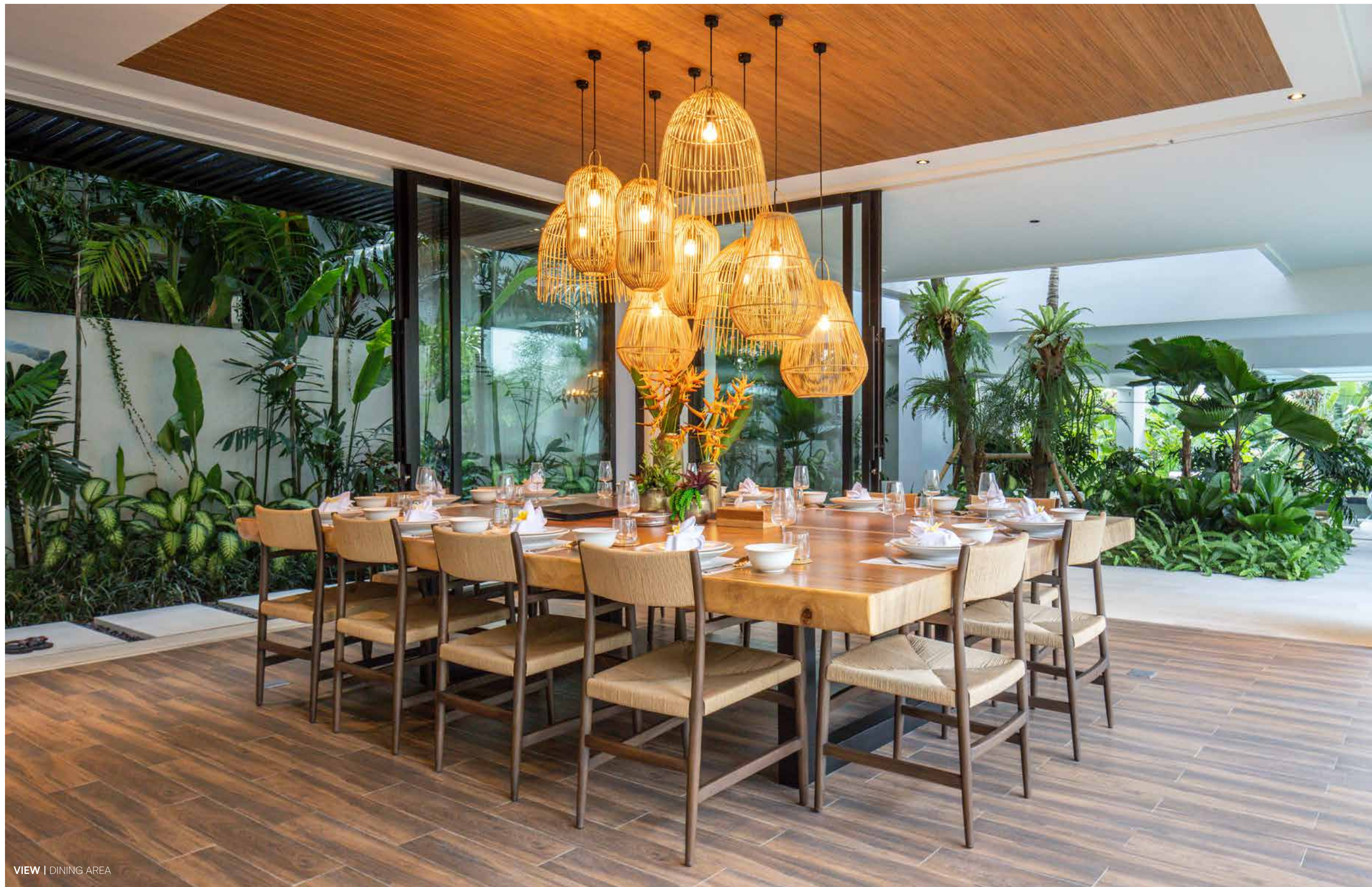
LIVING AREA | The living area exudes a lively and relaxed atmosphere, blending excitement with a sense of comfort. One side features a speakeasy-like bar, complete with romantic and elegant lighting that casts a warm glow over the marble countertop, inviting you to unwind with a drink in hand. Moving further into the space, a pool table stands ready to bring life and entertainment, serving as a focal point for social gatherings and friendly competitions. At the heart of the living area is the masterpiece: a two-couch and two arm chair arrangement with two beautiful wooden tables in between, designed for both relaxation and conversation. These plush, inviting couches face the garden, offering a serene view that seamlessly connects the indoors with the lush outdoors. The versatile space can be enjoyed as an open-air pavilion or enclosed sanctuary, without ever losing the stunning garden views. This perfect harmony of style and functionality creates a living area that is both vibrant and tranquil, a true haven for relaxation and enjoyment.



VIEW | DECORATION BESIDE STAIR



VIEW | BAR AREA



VIEW | DINING AREA



KITCHEN AND DINING | Nestled next to the garden, the kitchen and dining areas offer an inviting space for family and friends to gather and enjoy meals together. The main dining area, perfect for large gatherings, can comfortably accommodate 12 people. It is set amidst a romantic scenery, surrounded by lush greenery and illuminated by beautiful hanging bamboo lamps. The option to keep this area closed or open, thanks to the glass sliding doors, allows you to enjoy the scenery and view regardless of the weather.

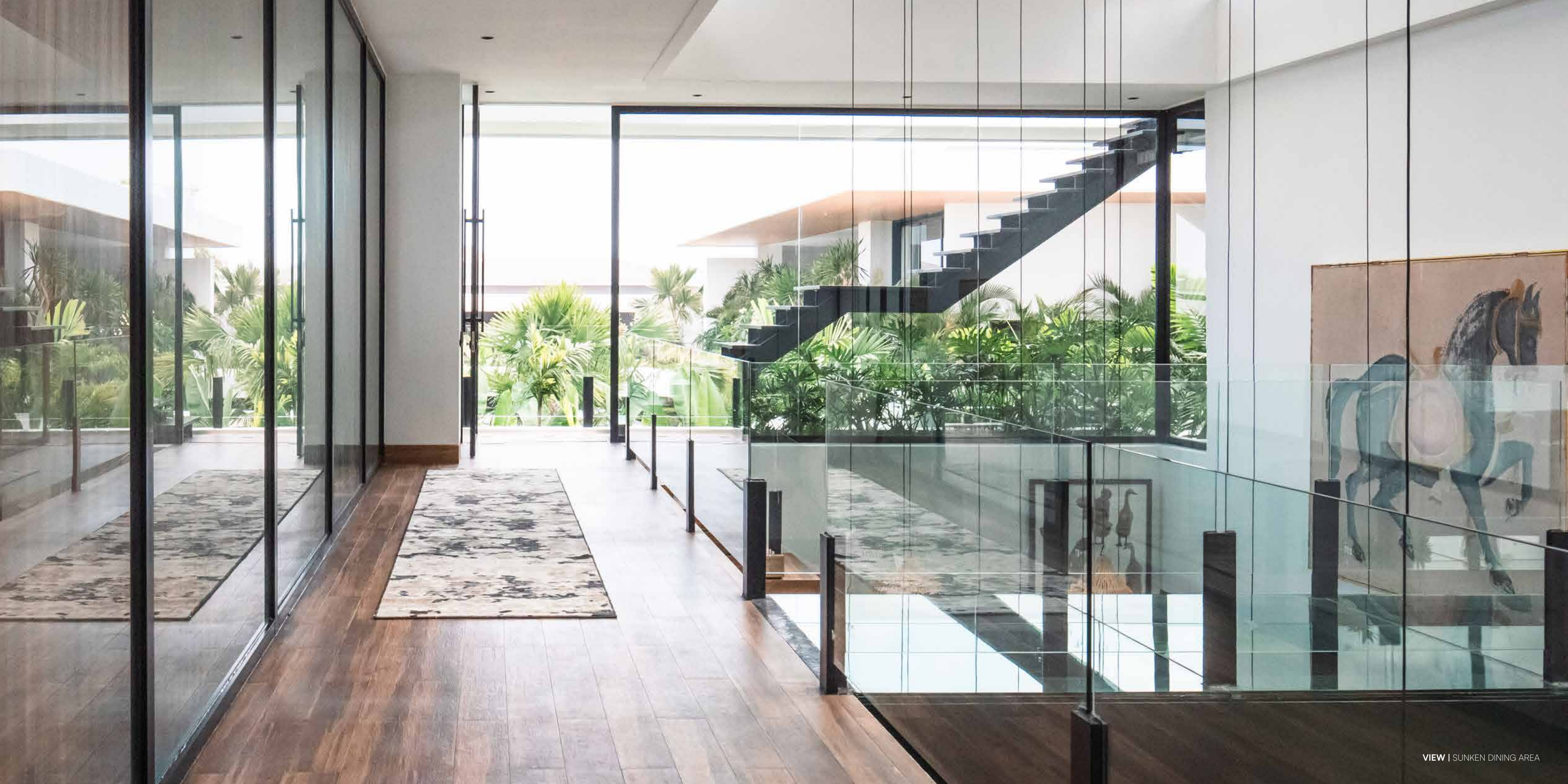
Adjacent to the main dining area is the second dining space, situated closer to the kitchen. This more intimate setting can accommodate up to 8 people, offering the same romantic ambiance and connection to nature as the main dining area. The kitchen, seamlessly integrated with both dining spaces, is designed for convenience and functionality. It features modern appliances and ample counter space, making meal preparation a delightful experience. The overall design fosters a harmonious blend of indoor and outdoor living, ensuring that every meal is enjoyed in a setting of beauty and tranquility.





SUNKEN LIVING | The sunken living area offers a relaxed retreat designed for enjoying drinks, playing cards, engaging in long night chats, and creating unforgettable moments. The décor is unique, featuring an L-shaped couch that faces a glass panel integrated into the pool, providing a captivating underwater view.

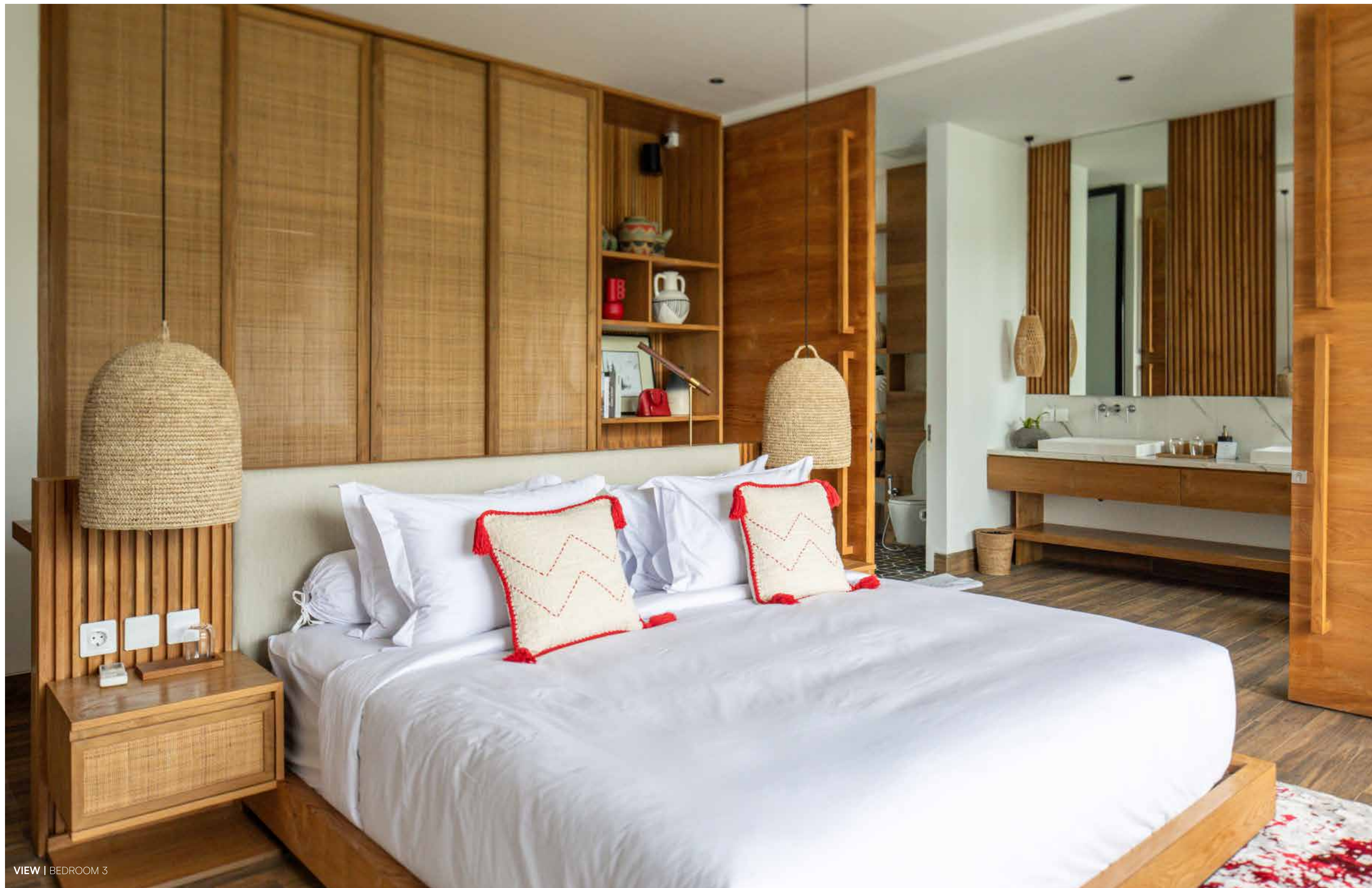
This cozy enclave invites you to unwind with a nice cigar, surrounded by the harmonious blend of greenery, nature, and the villa's elegant design. The sunken living space seamlessly integrates with the lush outdoor environment and the tranquil pool, making it an idyllic spot for both intimate gatherings and solitary relaxation. Here, the serene ambiance and thoughtful design elements come together to create a haven where luxury meets comfort, offering a perfect escape from the everyday.





LOWER BEDROOM | Being poolside, the lower bedroom boasts one of the best accesses in the house, offering stunning views of the exteriors. Though not overly large, the room is thoughtfully designed to provide everything you could wish for without feeling cramped. A standout feature is the closet with glass panels, adding a touch of modern elegance. The bathroom is equally impressive, featuring a bathtub with lights along the steps, creating a serene and luxurious ambiance. This room is a cozy, spacious, and luxurious retreat, perfectly blending comfort and style to ensure a delightful stay.

VIEW | LOWER BEDROOM



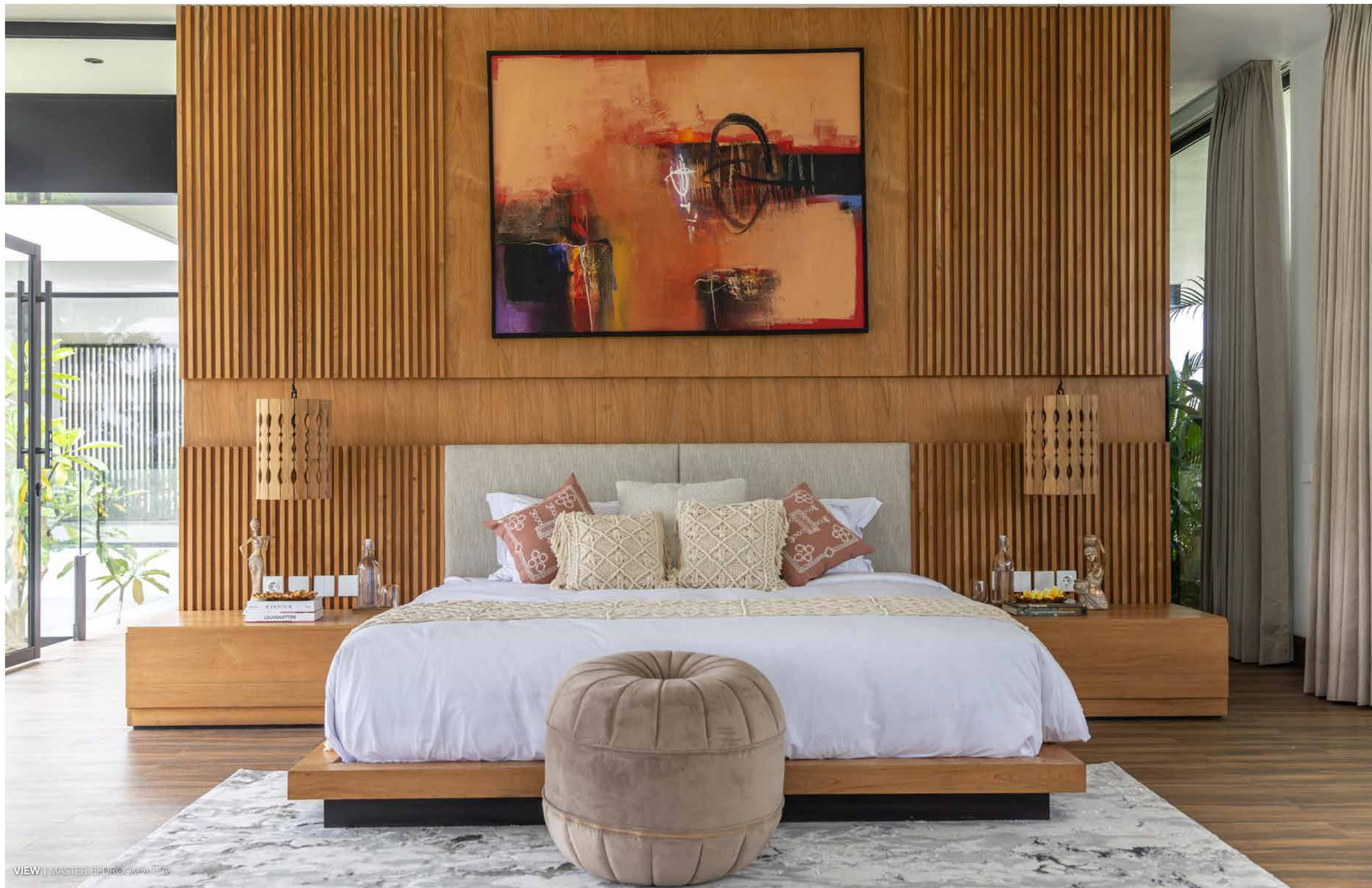
VIEW | BEDROOM 3



BEDROOMS 3 & 4 | Bedrooms 3 and 4 are designed with comfort and relaxation in mind, each featuring an additional bow window sofa, perfect for reading, unwinding, or simply enjoying the views. These cozy nooks provide a serene spot to take in the surroundings, whether it's the lush garden or the tranquil pool. Each bedroom also includes a floating desk that spans the entire back area of the bed, offering a stylish and functional workspace. The interiors of these rooms are thoughtfully curated to balance comfort and luxury, ensuring a restful and enjoyable stay. Soft, neutral tones and high-quality materials create a soothing ambiance, while large windows allow natural light to flood the space, enhancing the sense of openness and tranquility. With ample storage space, cozy seating areas, and well-appointed workspaces, Bedrooms 3 and 4 provide a perfect blend of relaxation and functionality, making them ideal retreats within the villa. Whether enjoying a quiet moment on the bow window sofa or working at the floating desk, these bedrooms offer a harmonious balance of comfort and style.



VIEW | MINI MASTER BEDROOM AREA



VIEW | MASTER BEDROOM AREA



MASTER BEDROOM | The master bedroom is the epitome of luxury and refinement, offering an elevated experience that surpasses all expectations. This sanctuary features a next-level walk-in closet, complete with glass panels and special lighting, making it not only functional but also a visual masterpiece. The spacious closet ensures that everything is perfectly organized and easily accessible, adding a touch of elegance to your daily routine. An entire sunken area within the bedroom serves as a cozy retreat, furnished with a large sofa and table, perfect for relaxation or intimate conversations. Behind this sunken area, you'll find an office space with an L-shaped desk, providing a stylish workspace that blends seamlessly with the room's sophisticated design. The master bedroom private pool, crafted entirely of glass, features a stunning waterfall effect cascading over the main pool, creating a mesmerizing visual display. With its exquisite design and luxurious amenities, the master bedroom is a haven of tranquility and sophistication, where every moment is a true indulgence.





VIEW | MASTER BATHROOM



MASTER BATHROOM | The master bathroom features a sophisticated three-part design that caters to every need and desire. Central to this luxurious space is the expansive bathtub, a true centerpiece of relaxation. The tub is set off by gently illuminated steps, creating a serene and inviting atmosphere that beckons you to unwind and soak in the comfort. To the left of the bathtub, a private door leads to the bathroom area, ensuring convenience and privacy. On the right, another door opens to the spacious shower, offering a refreshing and invigorating experience. Each section of the master bathroom is thoughtfully designed to provide the utmost in comfort and functionality. This master bathroom harmonizes elegance and practicality, making it a sanctuary where you can escape the everyday and indulge in a spa-like experience. Whether you're enjoying a leisurely bath, using the well-appointed bathroom facilities, or rejuvenating in the shower, this space offers everything you could ask for in a master bathroom.



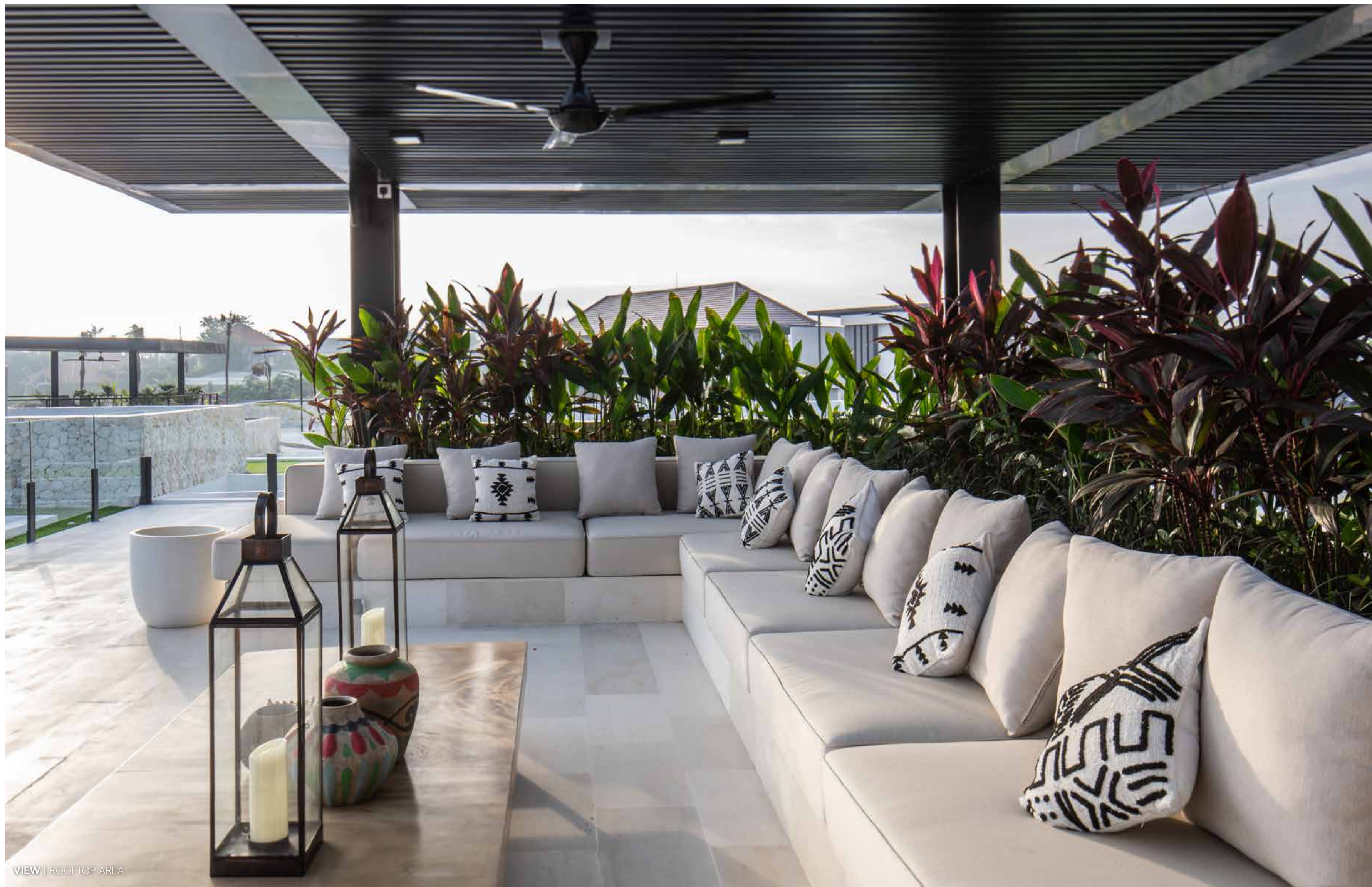
VIEW | WALK IN CLOSET



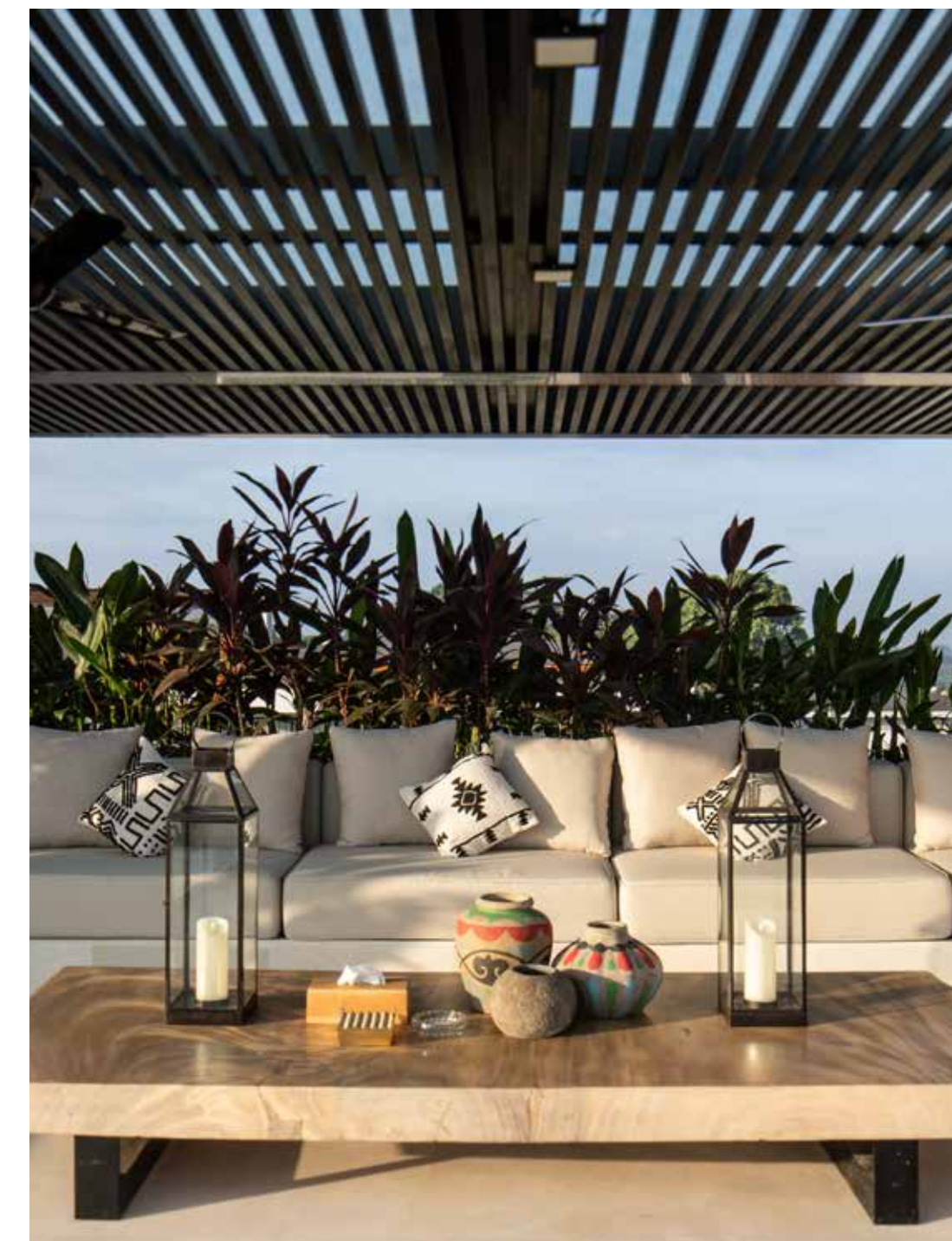
VIEW | SUNBED PLUNGE POOL



VIEW | PLUNGE POOL

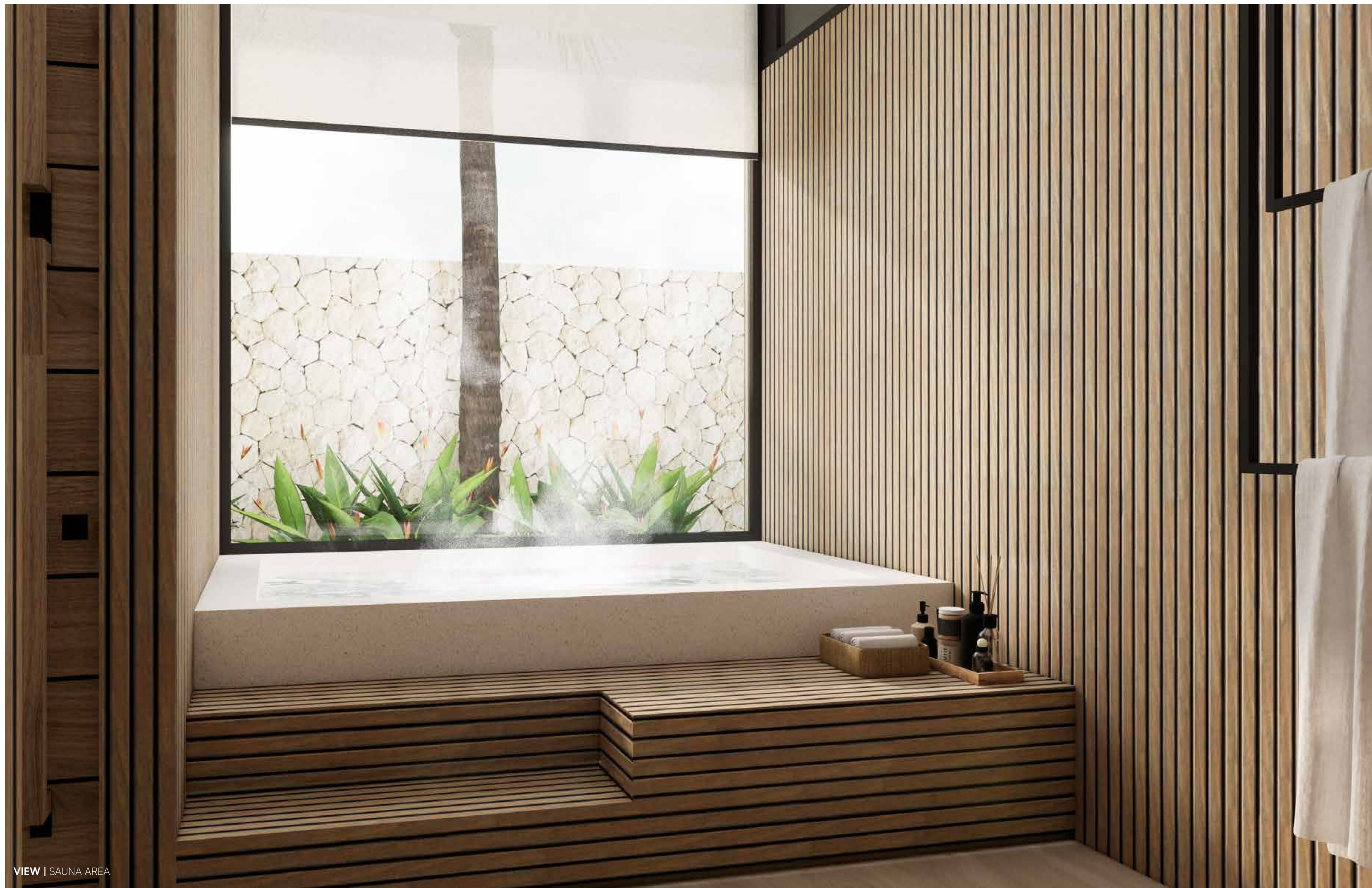


VIEW | ROOFTOP AREA

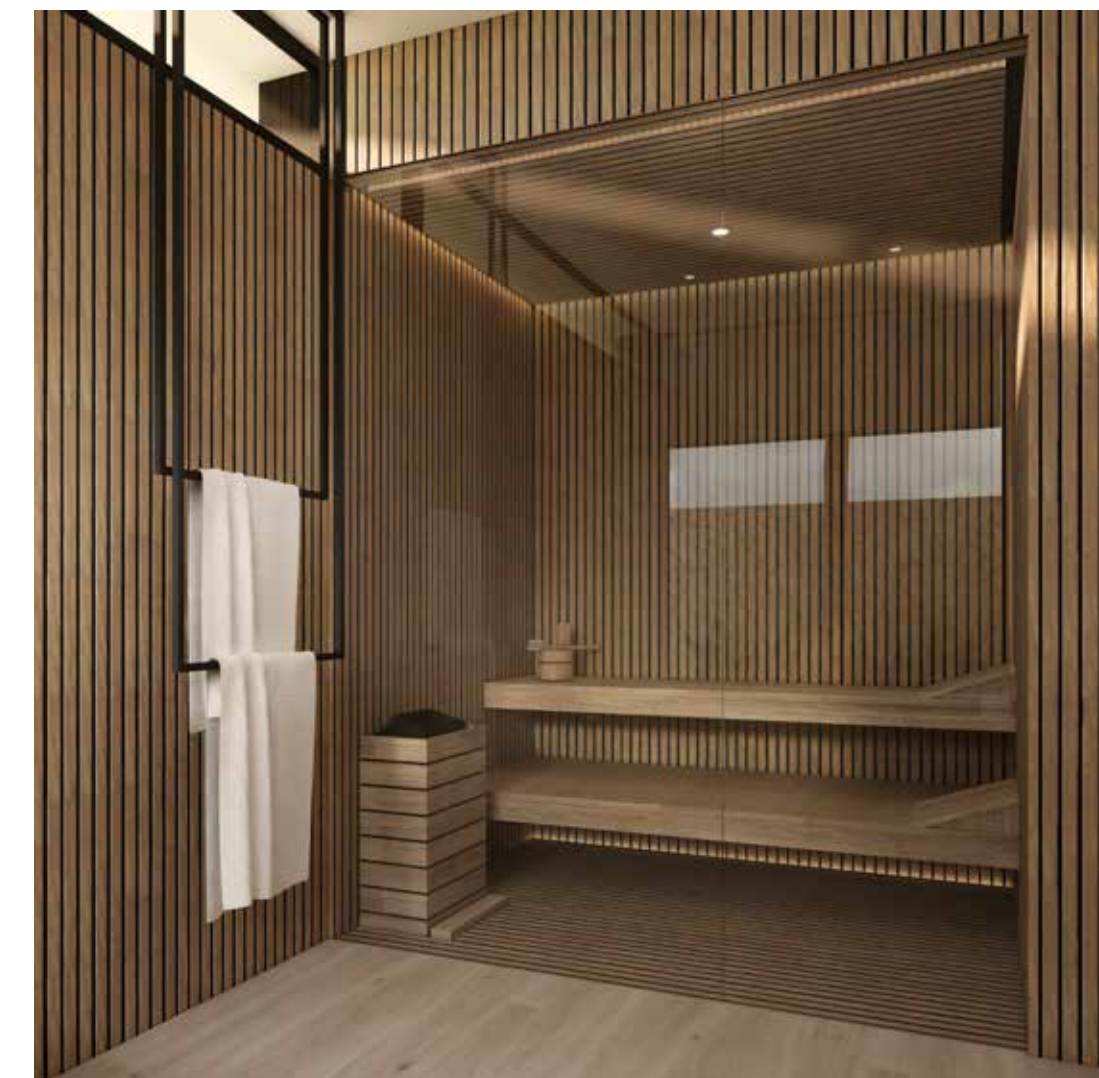


ROOFTOP AREA | The rooftop area is easily accessible via the main stairs, leading to an absolute haven of peace. With a 360 degree view 180 degrees of lush rice fields and the other 180 degrees of the serene ocean you could stay up here for hours, soaking in the beauty of your surroundings. This rooftop paradise features a covered lounge area, perfect for a variety of activities. Host barbecues, enjoy drinks with friends, engage in workouts, or even organize movie nights under the stars. The versatile space ensures that it never gets old and promises to create countless cherished memories. Designed for relaxation and enjoyment, the rooftop area offers a seamless blend of natural beauty and functional elegance. Whether you're looking for a quiet escape or a lively gathering spot, this space will exceed your expectations, providing an unforgettable experience every time.



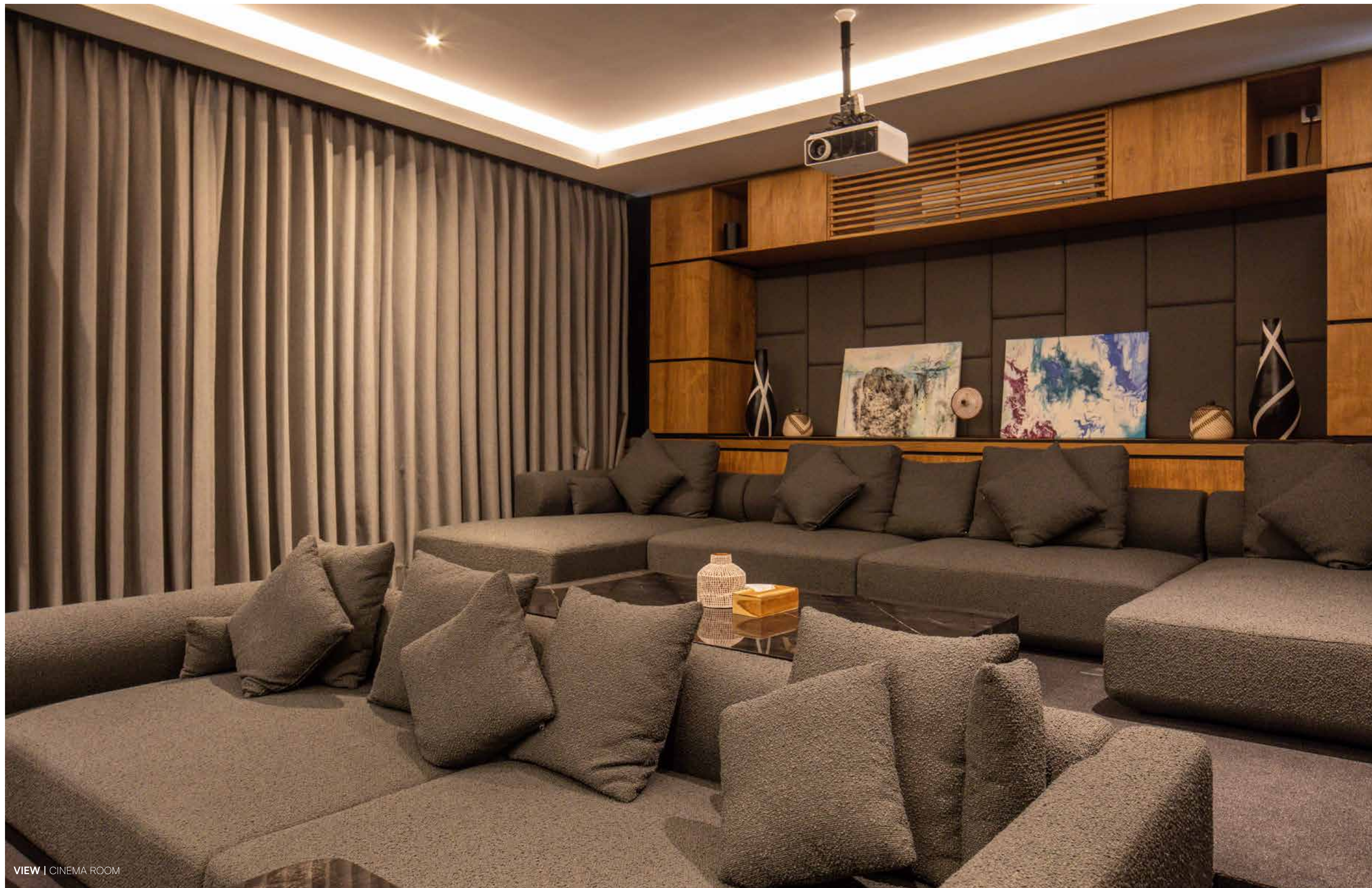


VIEW | SAUNA AREA

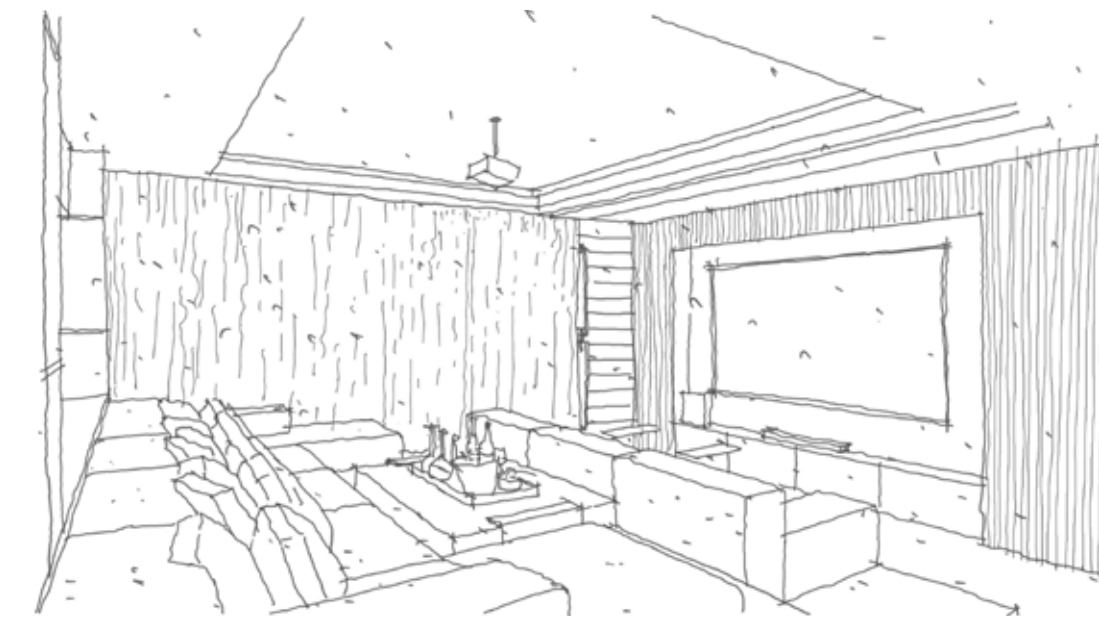


SPA AND SAUNA | The spa and sauna are conveniently located behind the gym area, offering an ideal space for recovery after every workout session. Designed to provide a true spa sensation, this area is filled with various facilities to ensure complete relaxation and rejuvenation. The serene environment includes a sauna, ice bath, hot tub, and a massage room equipped with two beds. Each facility is designed to cater to your wellness needs, providing a comprehensive spa experience. The earthy tones and natural materials used throughout the space create a soothing atmosphere, enhancing the overall sense of tranquility. Additionally, the spa area includes a well-appointed toilet, ensuring every convenience is at your disposal. Whether you're indulging in a relaxing massage, enjoying the hot tub, or rejuvenating in the ice bath, the spa and sauna area promises a sanctuary of calm and well-being. This space seamlessly blends luxury and comfort, offering a perfect retreat to unwind and recharge amidst the beauty of nature.





VIEW | CINEMA ROOM



CINEMA ROOM | The cinema room is the star of the show, offering an authentic cinematic experience with a touch of homey comfort. Entering this space gives you a sense of escape, as if you've stepped into a real movie theater. The room features two rows of seating with large, comfortable sofas designed for the perfect height and comfort, allowing you to spend hours watching your favorite movies and TV shows. Despite its professional cinema feel, the room retains cozy, home-like touches. A mini fridge for snacks ensures you have all your favorite treats at hand, while ample storage space keeps everything organized and clutter-free. Floating tables provide convenient surfaces for drinks and snacks without compromising on space. Every detail has been carefully considered to enhance your viewing pleasure, making this room truly the charm of the villa. Whether you're hosting a movie night with friends or enjoying a quiet evening with family, the cinema room promises an unforgettable experience in luxurious comfort.

LANDSCAPE



LANDSCAPE | The landscape at Villa Norbu is a carefully crafted tropical oasis that envelops the entire modern villa, creating an inviting and cozy atmosphere. The lush greenery surrounds the house, softening its sleek lines and modern architecture with the natural beauty of tropical plants. This thoughtful integration of landscape design not only enhances the aesthetic appeal but also brings a sense of warmth and comfort to the space. The tropical plants, with their vibrant colors and textures, add layers of visual interest that make Villa Norbu feel like a tranquil retreat. The landscape design encourages a seamless flow between indoor and outdoor living, making the villa feel more connected to its natural surroundings. The result is a cozy, serene environment where the modern structure of the villa is perfectly balanced by the lush, tropical landscape that surrounds it.



VILLA NORBU

FELIPE GONZALEZ JIMENEZ DE LA ESPADA

ARCHITECT & DESIGNER

Felipe González Jiménez de la Espada leads an international team of professionals, emphasizing the importance of uniqueness in every moment to create distinctive experiences for clients, regardless of project scale. We translate diverse client wishes into functional and enduringly beautiful creations. With a blend of modern and traditional influences, our focus on quality ensures that luxury and simplicity exude elegance.

Since 1995, Felipe González Jiménez de la Espada has acquired an impressive portfolio of private, corporate and commercial clients in 15 countries around the world. Its headquarters are based in Madrid, Spain.

THE PRACTICE

“The art of listening”. Founded in 1995, Sukyf is an internationally renowned architecture design studio. Recognized for its multidisciplinary approach and the talent of balancing functionality, aesthetics into each one their creations and designs. Sukyf Studio creates bespoke modern minimalist architecture, interiors, furnitures and product designs. The concept of blending exterior, interior and product design skills with context, culture and environment. We feel, we enjoy and the most important part of an studio firm we listen to our clients, spending time with them letting them open themselves to us in order to squeeze until the last drop of their personality in order to translate that into the character of each individual architecture or element that we design, always searching for the perfect fusion on elements for that one singular design.

Our purpose is to shift and exceed the expectations of every single one of our clients either private or corporate ones. Quality as a philosophy, passion on every single line, natural materials, simplicity, elegance and the maximum combination on three element, textures or colors on every creation drives you to an exceptional detail result. Innovation, timeless appeal, proportions and comfort as fundamentals on every design.



scan for videos



For further information :
www.sukyf.com | info@sukyf.com





NORBU

P R I V A T E V I L L A

www.sukyf.com || info@sukyf.com