

CLIFF HOUSE

PRIVATE VILLA



CLIFFHOUSE

PRIVATE VILLA

SUKYF & ARCHITECTS



ARCHITECTURE BY

FELIPE GONZALEZ

INTERIOR BY

MERSUKA DOPAZO

TEXT BY

NICOLAS GONZALEZ

ILLUSTRATION BY

KADEK ARIYASA

AYU SRI SUJATI

AGUNG KRISHNAN

CONTENT

CREDITS.....	.06
CONTENT.....	.07
WELCOME TO VILLA CLIFF HOUSE.....	.09
LOCATION.....	.13
SITE PLAN.....	.17
THE VILLA.....	.21
LANDSCAPE.....	.87
SUKYF ARCHITECTS.....	.95

WELCOME TO
CLIFF HOUSE



LOCATION



ULUWATU BEACH

THOMAS BEACH

LABUAN SAIT BEACH

PADANG-PADANG BEACH

THE PLACE WITH NO NAME

LE CLIFF BALI

ANANTARA ULUWATU

HATCH ULUWATU

BAMBU FITNESS BALI

GOOSEBERRY RESTAURANT

CLIFF HOUSE

JL. PEDATI

CEMONGKAK BEACH

BINGIN BEACH

NEW KUTA GOLF

SWISS-B...

JL. PEDATU INDAH RAYA

JL. PANTAI CEMONGKAK

JL. PANTAI BINGIN

JL. LABUANSAIT

JL. T.J. SIMAH

JL. BIJAWA SAFI

JL. PANTAI CEMONGKAK

JL. LABUANSAIT

JL. PURA KUAT

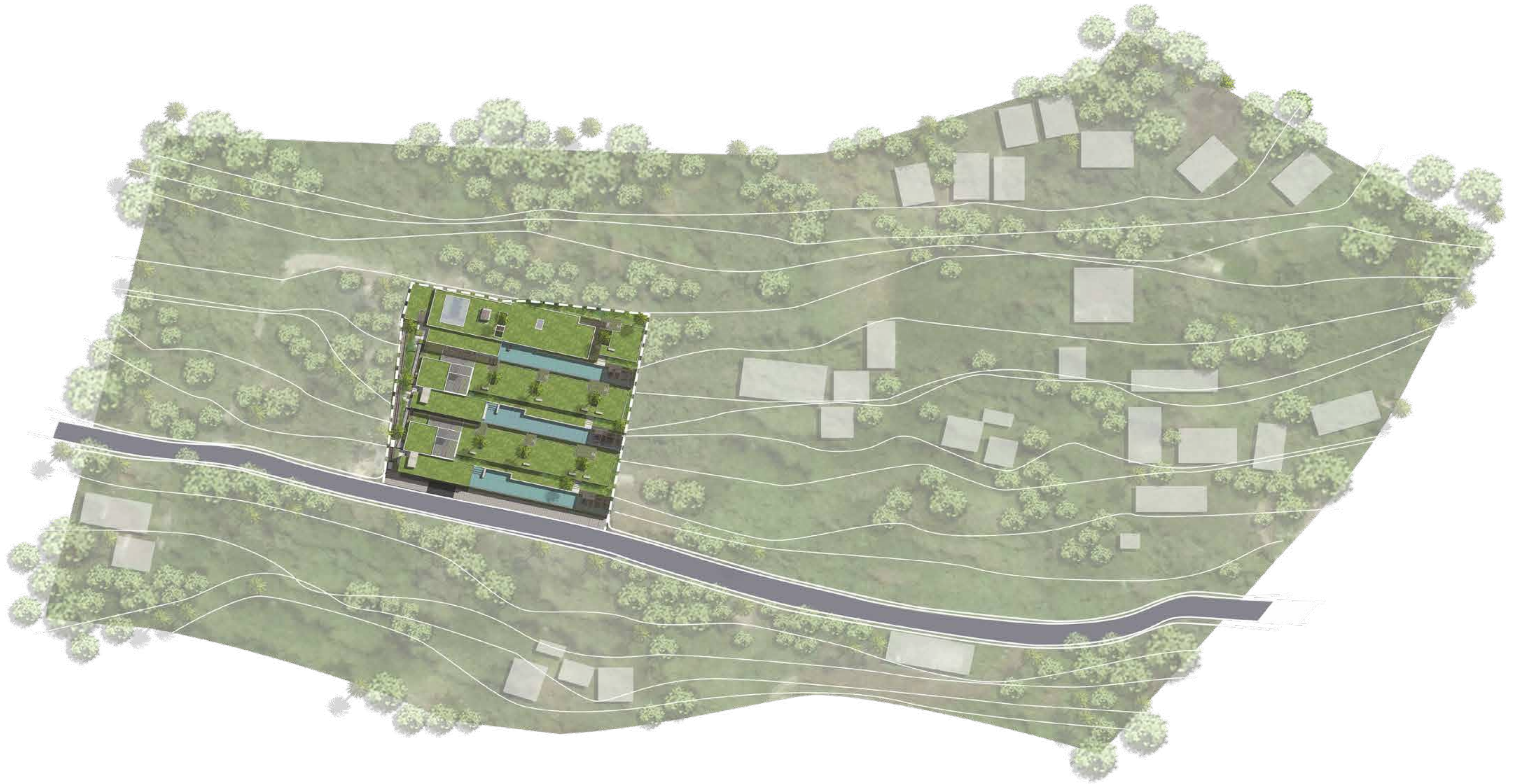
JL. LABUANSAIT

JL. PANTAI CEMONGKAK

LEMANJA

PAK WISESA

SITE PLAN



THE VILLA



VIEW | CLIFF HOUSE

Villa Cliff House
4172.8 sqm

Sukyf Architects
Felipe Gonzalez
Uluwatu

The villa embodies the essence of coastal luxury with its stunning cliffside location overlooking the Indian Ocean. The architectural design features a modern aesthetic that harmonizes with its natural surroundings. Expansive glass walls offer breathtaking panoramic views and invite the soothing ocean breeze inside. The use of natural stone and wood in the facade creates a warm yet contemporary feel, while the open-concept layout maximizes space and light. Terraced levels create intimate outdoor areas, including spacious balconies and a stunning infinity pool that seemingly merges with the horizon, emphasizing the villa's connection to its dramatic environment.

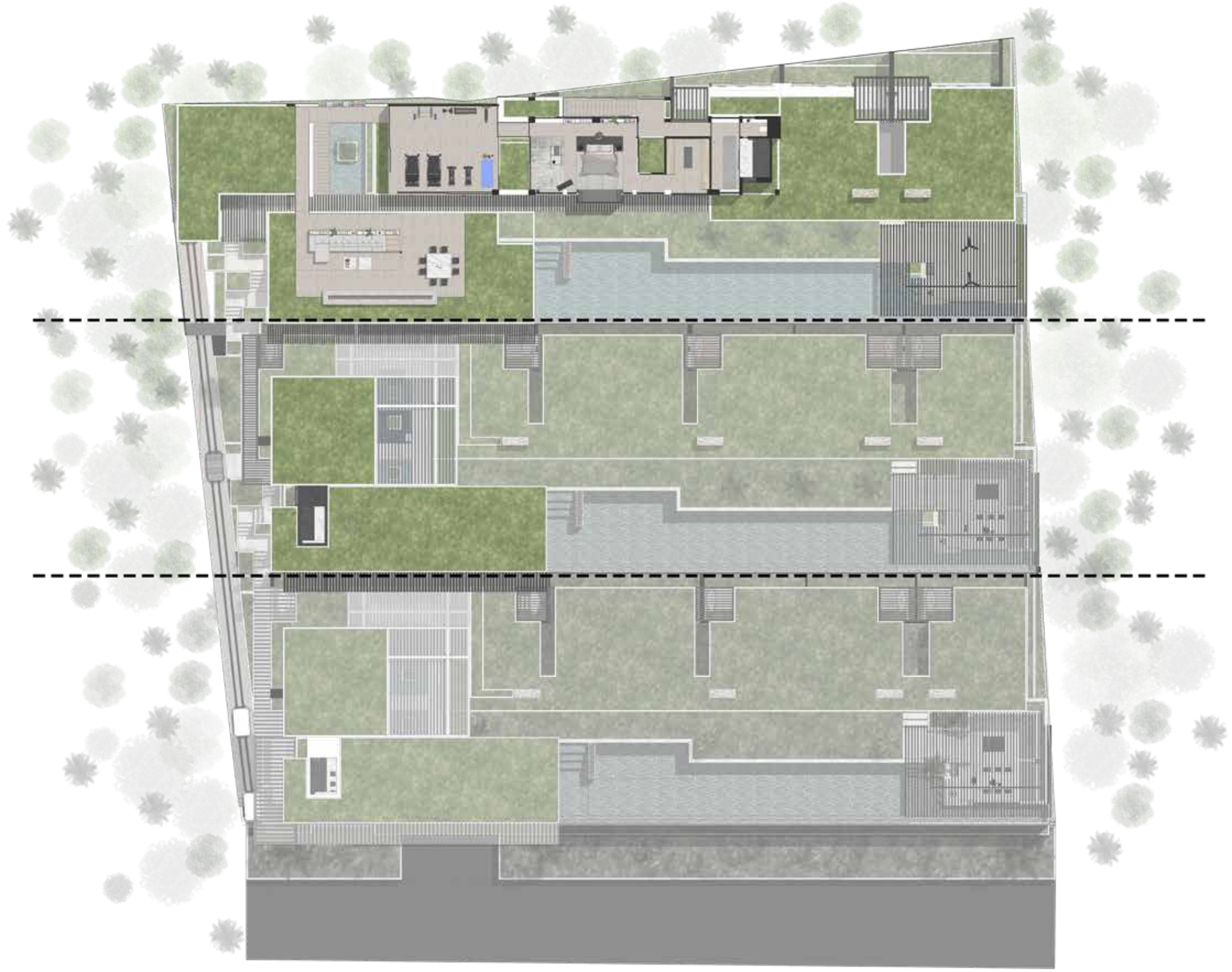


VIEW | ENTRANCE VILLA

ENTRANCE | The entrance to Villa Cliff House is a stunning architectural statement that perfectly balances modern elegance with natural beauty. A striking black metal door serves as the focal point, offering a bold contrast against the villa's textured stone facade. This contemporary entrance not only adds a sense of sophistication but also hints at the luxurious experience awaiting inside. As you approach, the rugged stone facade draws the eye, seamlessly integrating the structure with its cliffside environment. The interplay of the cool stone and the sleek metal door creates a harmonious blend of materials that embodies both strength and style. Flanking the entrance, carefully curated tropical landscaping enhances the natural setting, with lush greenery that softens the hard lines of the architecture. Above, a generous overhang provides shade, creating an inviting space that welcomes guests while providing protection from the elements.















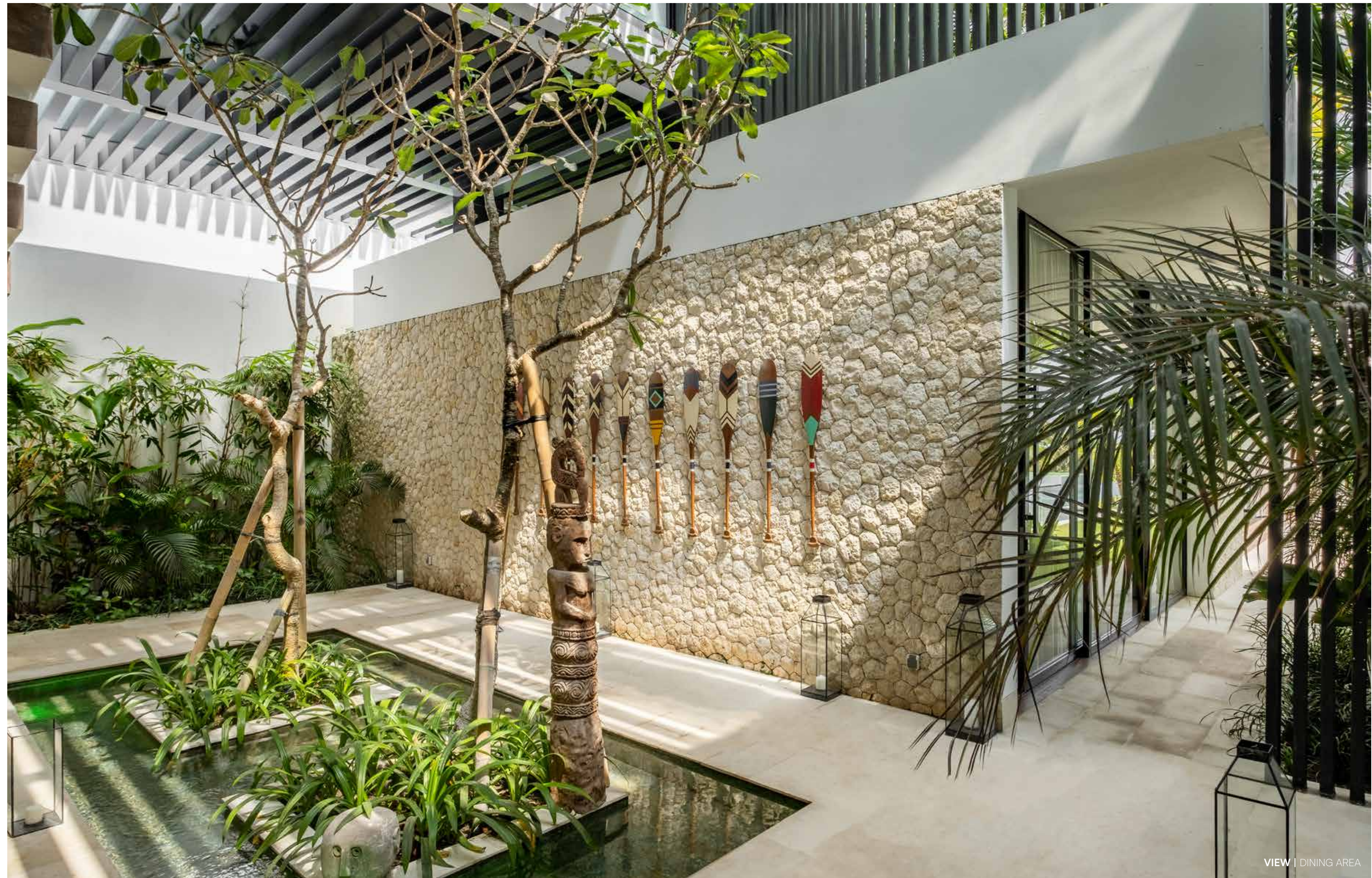


VIEW | MIDDLE AND BOTTOM VILLA FOYER



VIEW | FUNICULAR

FOYER AREA | The captivating introduction that sets the tone for the villa's blend of luxury and tranquility. Upon entering, guests are greeted by a serene indoor pond that gracefully reflects the surrounding natural light, creating a peaceful ambiance. The gentle sound of water adds a soothing element, enhancing the foyer's welcoming atmosphere. Flanking the pond, beautifully arranged planters filled with lush tropical foliage bring the vibrant essence of Bali indoors. These verdant accents not only provide a striking visual contrast but also create a refreshing sense of nature, inviting the outdoors into this elegant space. The warm tones of the antique items harmonize with curated materials used in the architecture, such as stone and metal, creating a cohesive aesthetic. The high ceilings and expansive layout amplify the sense of space, while subtle lighting highlights the intricate details of the decor, casting gentle shadows that enhance the foyer's charm. Overall, the foyer of Villa Cliff House serves as a serene and sophisticated gateway, seamlessly merging elements of nature with rich cultural heritage.

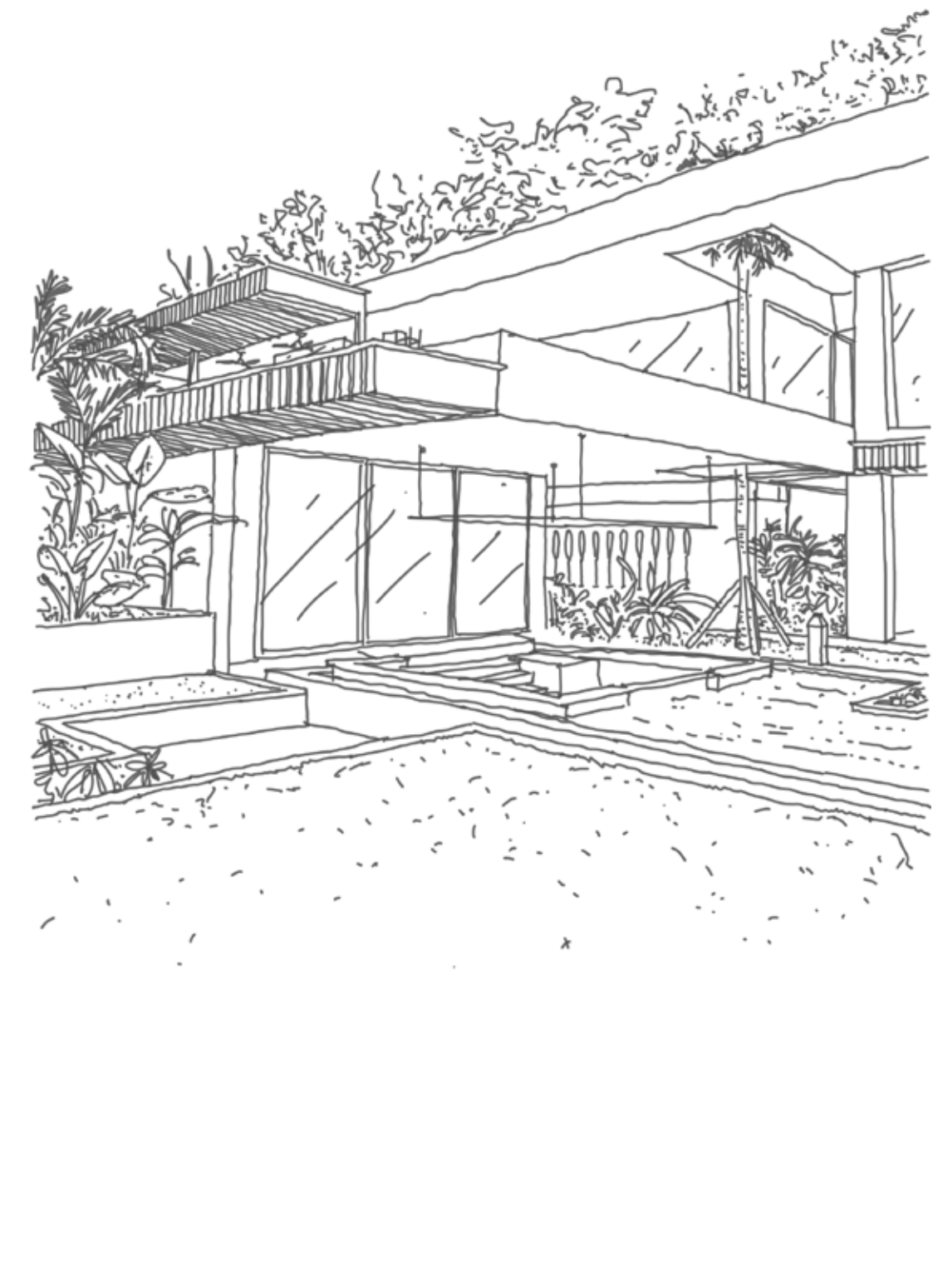


VIEW | DINING AREA





VIEW | KITCHEN



KITCHEN AND DINING | The contemporary kitchen features sleek cabinetry in rich tones, complemented by polished countertops that exude modern elegance. State-of-the-art appliances, including a built-in oven, induction cooktop, and spacious refrigerator, are integrated into the design for a streamlined look. A large island with bar seating serves as the focal point, providing ample space for meal preparation and casual dining. The minimalist design is enhanced by tasteful lighting fixtures that illuminate the workspace while adding a touch of sophistication. Stylish dining table, crafted from natural wood or sleek glass, comfortably accommodates guests and creates an inviting atmosphere for meals and gatherings. The kitchen and dining area provide a perfect blend of modern design and inviting comfort, all set against a backdrop of picturesque views.



VIEW | DINING AREA



VIEW | SUNKEN LIVING



SUNKEN LIVING | This thoughtfully designed retreat features a cozy, lower-level seating arrangement that creates an intimate atmosphere, perfect for relaxation and socializing. Surrounded by plush cushions and low seating in warm, earthy tones, the sunken living area exudes a relaxed boho vibe. At the heart of the space is a striking dark grey marble coffee table, which adds a touch of sophistication and serves as a focal point for gatherings. Its smooth surface beautifully contrasts with the soft textures of the surrounding furnishings, enhancing the overall aesthetic of the area. A stunning glass wall opens up to the pool area, providing an uninterrupted view of the sparkling waters and lush landscaping outside. This expansive feature allows natural light to flood the living area, enhancing the sense of space and bringing the beauty of nature indoors.





POOL AREA | Overlooking the stunning cliffs and the shimmering Indian Ocean, the infinity pool appears to merge seamlessly with the horizon, creating a mesmerizing visual effect. Its crystal-clear waters invite guests to take a refreshing dip while basking in the warm Bali sun. Surrounding the pool, elegant loungers are thoughtfully arranged, providing ample space for relaxation and sunbathing. The landscaping around the pool is meticulously curated, showcasing a vibrant array of tropical plants, colorful flowers, and lush greenery that enhances the natural beauty of the setting. Tall palms sway gently in the breeze, offering a sense of privacy and tranquility. Soft ambient lighting illuminates the pool area in the evenings, creating a magical atmosphere for nighttime gatherings.

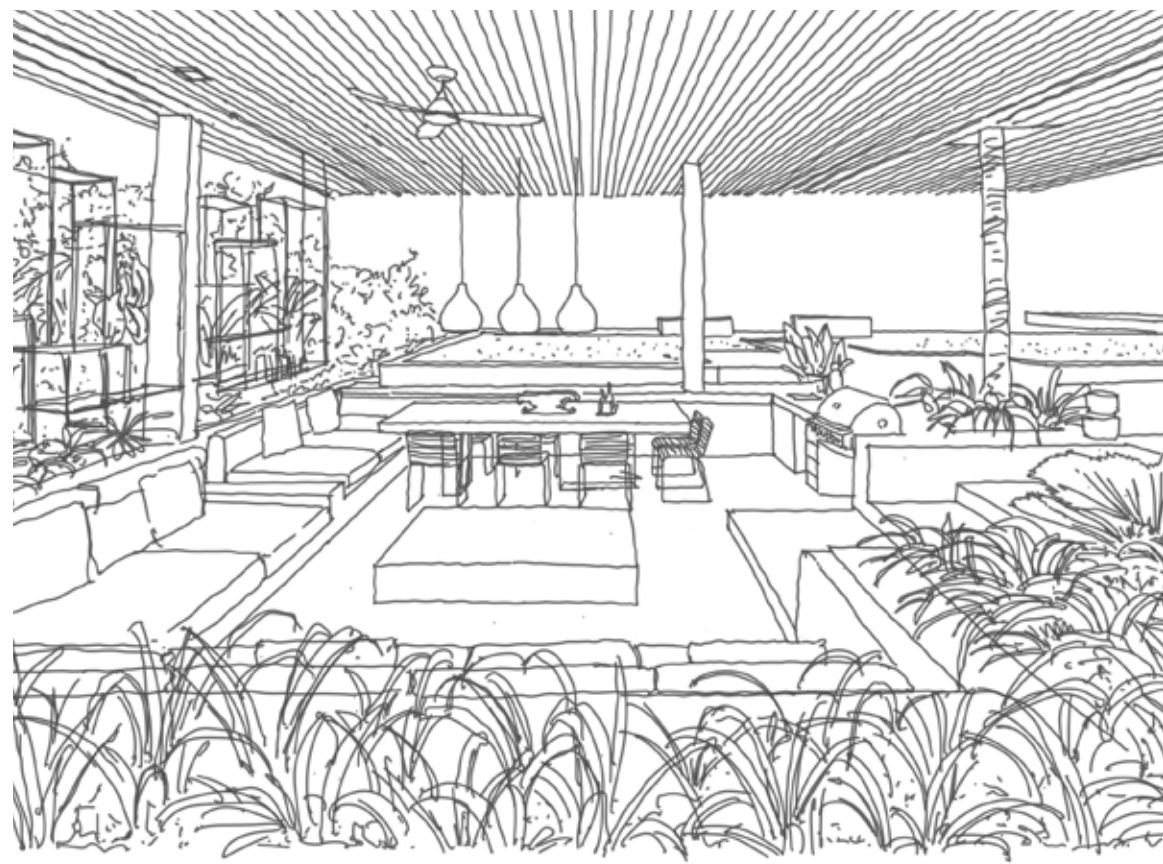


VIEW | LIVING AREA



LIVING AREA | The stylish and inviting space that combines contemporary design with natural elements, creating a perfect retreat for relaxation and socializing. The room features sleek wooden flooring that adds warmth and a touch of elegance. Prominently displayed are striking black metal shelves that showcase a curated selection of artwork and decorative pieces. This bold design choice not only serves as a functional storage solution but also acts as a dynamic focal point, enhancing the artistic ambiance of the space. The carefully arranged artworks reflect the vibrant culture of Bali, infusing the area with a sense of local charm and creativity. Comfortable seating, adorned with plush cushions in earthy tones, invites relaxation while encouraging conversation. Large windows allow natural light to flood the space, creating an airy and inviting atmosphere that connects the indoors with the breathtaking outdoor views.





SUNKEN AND BAR | The sophisticated yet inviting space seamlessly blends culinary delight with the beauty of nature. Set against a backdrop of vibrant tropical plants, this area features a stylish black metal partition that offers both privacy and a modern aesthetic. A generously sized dining table crafted from stunning marble is surrounded by comfortable chairs, making it the perfect setting for gatherings with family and friends. Above, rattan pendant lights hang gracefully, casting a warm, ambient glow that enhances the atmosphere during evening meals complementing villa's overall aesthetic. The landscaping creates a serene atmosphere, inviting diners to immerse themselves in the natural beauty of Uluwatu.



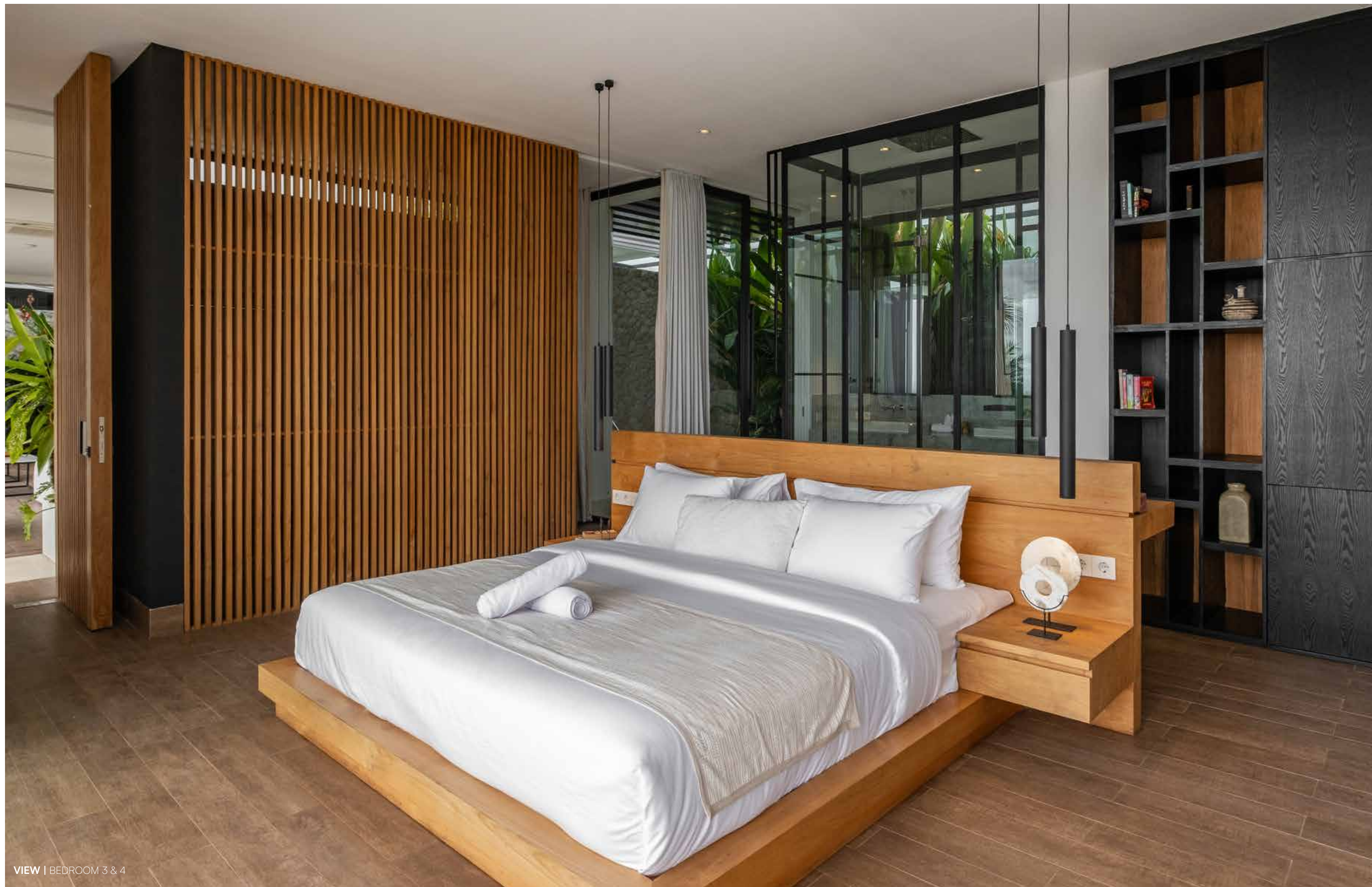


VIEW | BEDROOM 1



BEDROOM 1 | This tropical bedroom design is a serene sanctuary that beautifully captures the essence of island living. With large sliding glass doors that open directly to a lush garden, the room is infused with natural light and the soothing sounds of nature. The vibrant greenery outside creates a stunning backdrop, enhancing the sense of tranquility and connection to the outdoors. Soft lighting enhances the ambiance, creating a warm and inviting atmosphere that transitions beautifully from day to night. The seamless view of the garden not only enhances the aesthetics but also promotes a sense of peace and serenity. The decor features a harmonious blend of natural materials and textures, with a focus on warm wood accents and soft, breathable fabrics. A plush king-sized bed, dressed in light linens and adorned with colorful, tropical-inspired throw pillows, invites relaxation and comfort.





VIEW | BEDROOM 3 & 4



BEDROOM 3 & 4 | The bedroom is a serene sanctuary that embodies modern contemporary style, designed to provide ultimate comfort and relaxation. Spacious and airy, the room features large windows that frame breathtaking views of the surrounding landscape, allowing natural light to fill the space and creating a warm, inviting ambiance. Furnishings are kept modern and functional, with streamlined bedside tables and stylish lamps that provide soft lighting for nighttime reading. The en-suite bathroom is a stunning extension of the bedroom, featuring high-end fixtures and finishes, including a spacious walk-in shower and elegant stone countertops. Thoughtfully designed storage solutions maintain a clean, uncluttered look. Overall, the bedroom is a beautifully designed retreat that marries modern sophistication with a soothing atmosphere, providing guests with a tranquil haven to escape and rejuvenate.





VIEW | MASTER BEDROOM - MIDDLE & BOTTOM VILLA



VIEW | MASTER BEDROOM - TOP VILLA



VIEW | MASTER BEDROOM - TOP VILLA

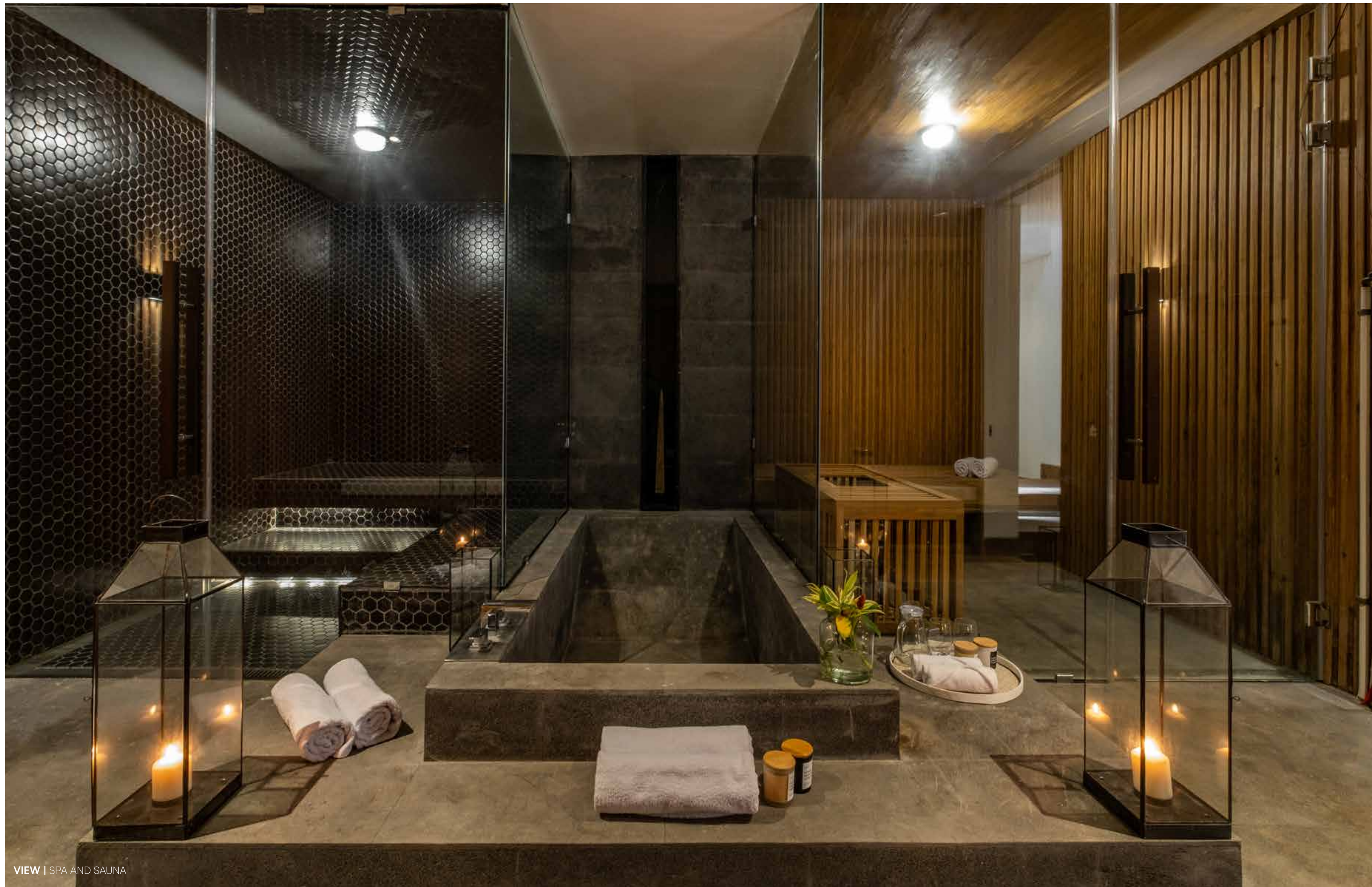


MASTER BEDROOM - TOP VILLA | The stunning embodiment of modern contemporary style, offering an elegant and tranquil retreat. This spacious sanctuary features large windows that invite abundant natural light and showcase breathtaking views of the coastal surroundings, creating an immersive experience that seamlessly connects the indoors with nature. The sleek lines of the bed frame and headboard reflect a minimalist aesthetic, while soft, muted colors promote a calming ambiance. A luxurious en-suite bathroom complements the master bedroom, offering a spa-like experience with high-end fixtures and finishes. The space features a spacious walk-in shower, a deep soaking tub with a view, and elegant double vanities topped with polished marble countertops. Soft lighting and carefully chosen materials create a soothing atmosphere, perfect for unwinding after a day of exploration.





NETFLIX



VIEW | SPA AND SAUNA



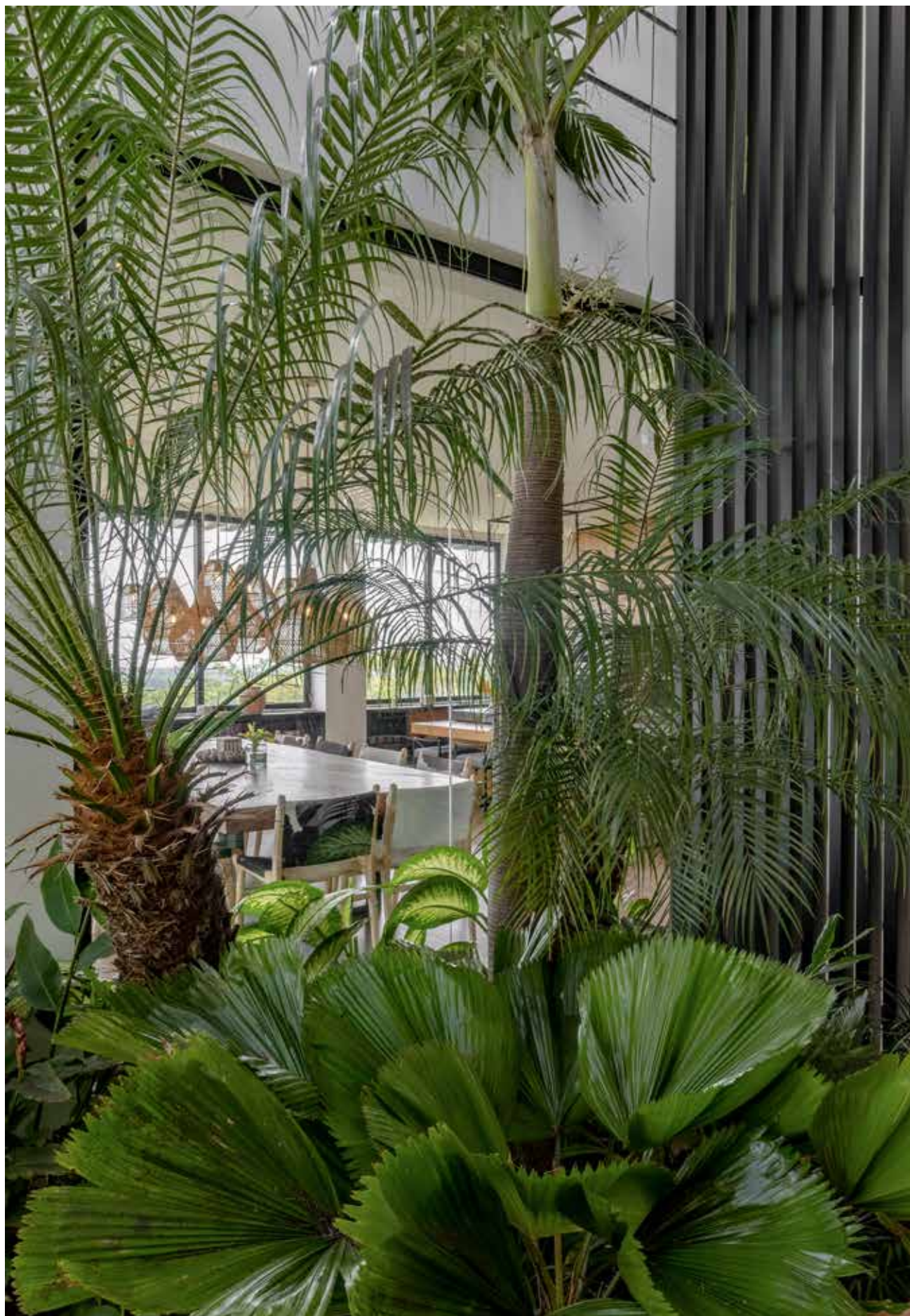
SPA AND SAUNA | The spa features a calming ambiance, with soft lighting and natural materials that create a soothing atmosphere. Treatment rooms are elegantly appointed, offering a range of indulgent services, from traditional Balinese massages to rejuvenating facials. Large windows invite the beauty of nature inside, allowing guests to unwind while enjoying views of the tropical landscape. Both the spa and sauna areas are thoughtfully equipped with high-quality amenities, ensuring a luxurious experience from start to finish. Guests can immerse themselves in tranquility, enjoying the perfect blend of modern luxury and natural beauty in this exquisite wellness sanctuary. The room serve as a tranquil retreat, providing the ultimate escape for relaxation and rejuvenation amid the breathtaking surroundings of Uluwatu.



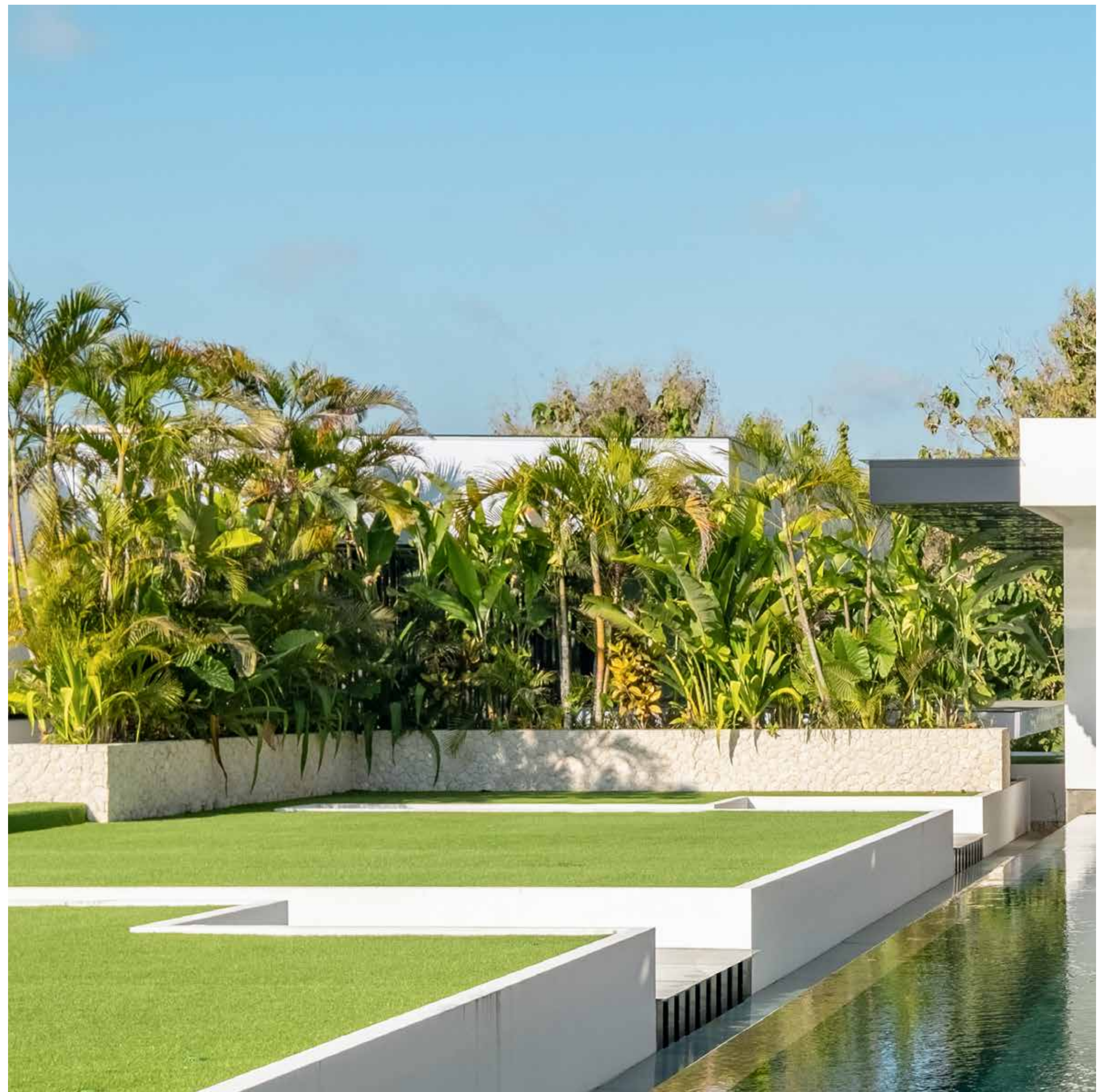
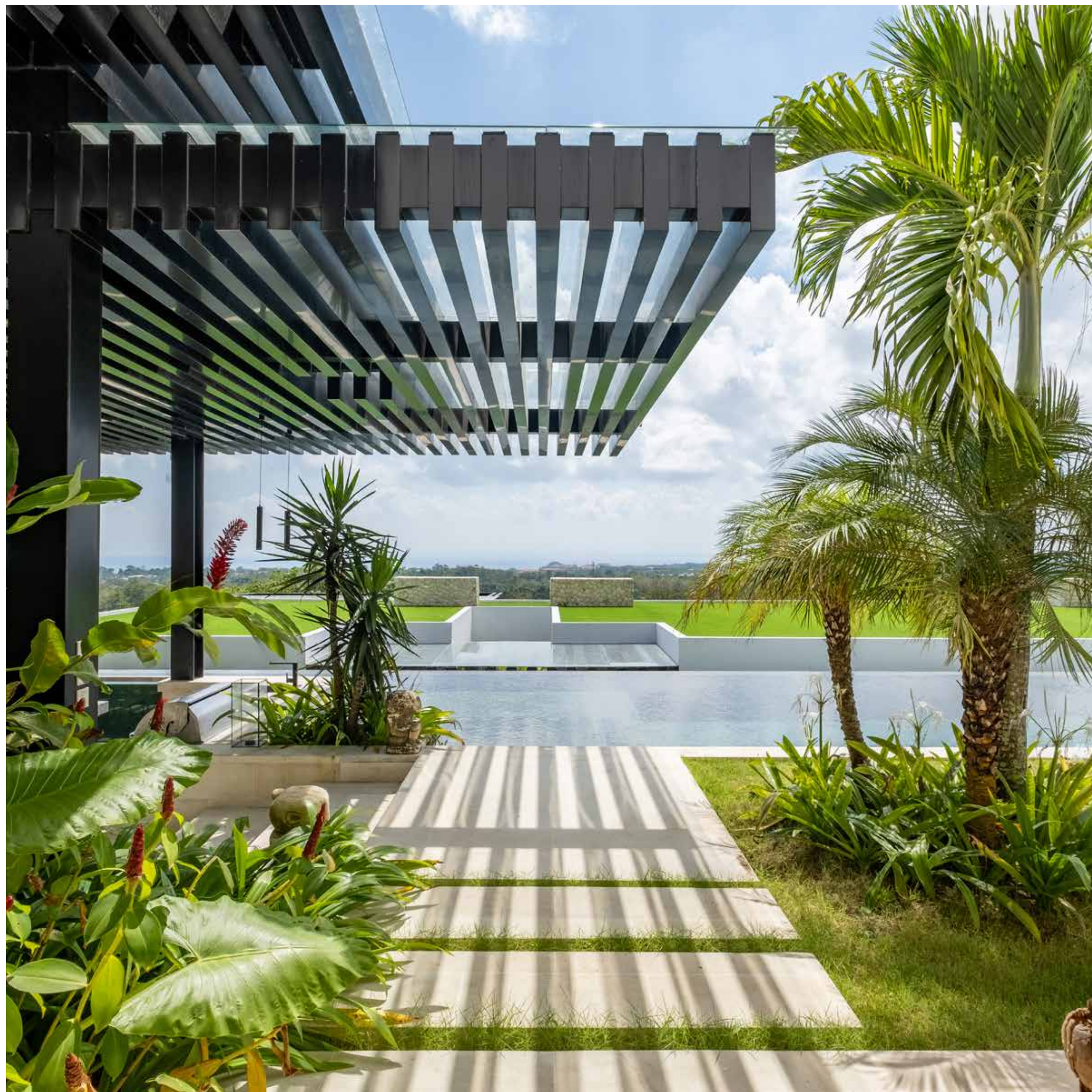
GYM ROOM | This gym room is a state-of-the-art fitness haven located on the upper floor, offering breathtaking views of the surrounding landscape and ocean. This thoughtfully designed space combines functionality with a serene ambiance, making it an ideal environment for both invigorating workouts and peaceful reflection. Equipped with a range of high-quality exercise machines, including cardio equipment, free weights, and resistance training tools, the gym caters to all fitness levels. Large windows fill the room with natural light, creating an uplifting atmosphere while providing stunning views that inspire motivation and focus. The decor is modern and minimalistic, featuring sleek lines and neutral tones that promote a sense of calm.

VIEW | GYM ROOM

LANDSCAPE



LANDSCAPE | The villa is surrounded by lush greenery, vibrant tropical plants, and carefully curated flower beds that create a serene and inviting atmosphere. A central feature of the landscape is the beautifully designed infinity pool, which appears to spill into the horizon. The pool area is surrounded by stylish loungers and shaded seating, providing an ideal spot for relaxation while enjoying the panoramic views of the Indian Ocean and the dramatic cliffs of Uluwatu. Water features, such as a tranquil koi pond or gentle fountains, add a soothing element to the garden, enhancing the sense of peace and tranquility, creating an idyllic retreat that embraces the natural charm of Bali.





FELIPE GONZALEZ JIMENEZ DE LA ESPADA

ARCHITECT & DESIGNER

Felipe González Jiménez de la Espada leads an international team of professionals, emphasizing the importance of uniqueness in every moment to create distinctive experiences for clients, regardless of project scale. We translate diverse client wishes into functional and enduringly beautiful creations. With a blend of modern and traditional influences, our focus on quality ensures that luxury and simplicity exude elegance.

Since 1995, Felipe González Jiménez de la Espada has acquired an impressive portfolio of private, corporate and commercial clients in 15 countries around the world. Its headquarters are based in Madrid, Spain.

THE PRACTICE

“The art of listening”. Founded in 1995, Sukyf is an internationally renowned architecture design studio. Recognized for its multidisciplinary approach and the talent of balancing functionality, aesthetics into each one their creations and designs. Sukyf Studio creates bespoke modern minimalist architecture, interiors, furnitures and product designs. The concept of blending exterior, interior and product design skills with context, culture and environment. We feel, we enjoy and the most important part of an studio firm we listen to our clients, spending time with them letting them open themselves to us in order to squeeze until the last drop of their personality in order to translate that into the character of each individual architecture or element that we design, always searching for the perfect fusion on elements for that one singular design.

Our purpose is to shift and exceed the expectations of every single one of our clients either private or corporate ones. Quality as a philosophy, passion on every single line, natural materials, simplicity, elegance and the maximum combination on three element, textures or colors on every creation drives you to an exceptional detail result. Innovation, timeless appeal, proportions and comfort as fundamentals on every design.



scan for videos



For further information :
www.sukyf.com | info@sukyf.com



est. 2022





CLIFF HOUSE

P R I V A T E V I L L A

www.sukyf.com || info@sukyf.com