

# BELLADONNA

PRIVATE VILLA

# BELLADONNA

PRIVATE VILLA

SUKYF & ARCHITECTS





## ARCHITECTURE BY

FELIPE GONZALEZ

RAHAYU SITHA

EKHO ADI PUTRA

AGUNG KRISHNAN

## INTERIOR BY

DENI YUSRIZAL

ANN MARIYA GEOGY

OKTAVIRA PARAMITA

## TEXT BY

NICOLAS GONZALEZ

## ILLUSTRATION BY

KADEK ARIYASA

AYU SRI SUJATI

WANGSA SWANDEWI

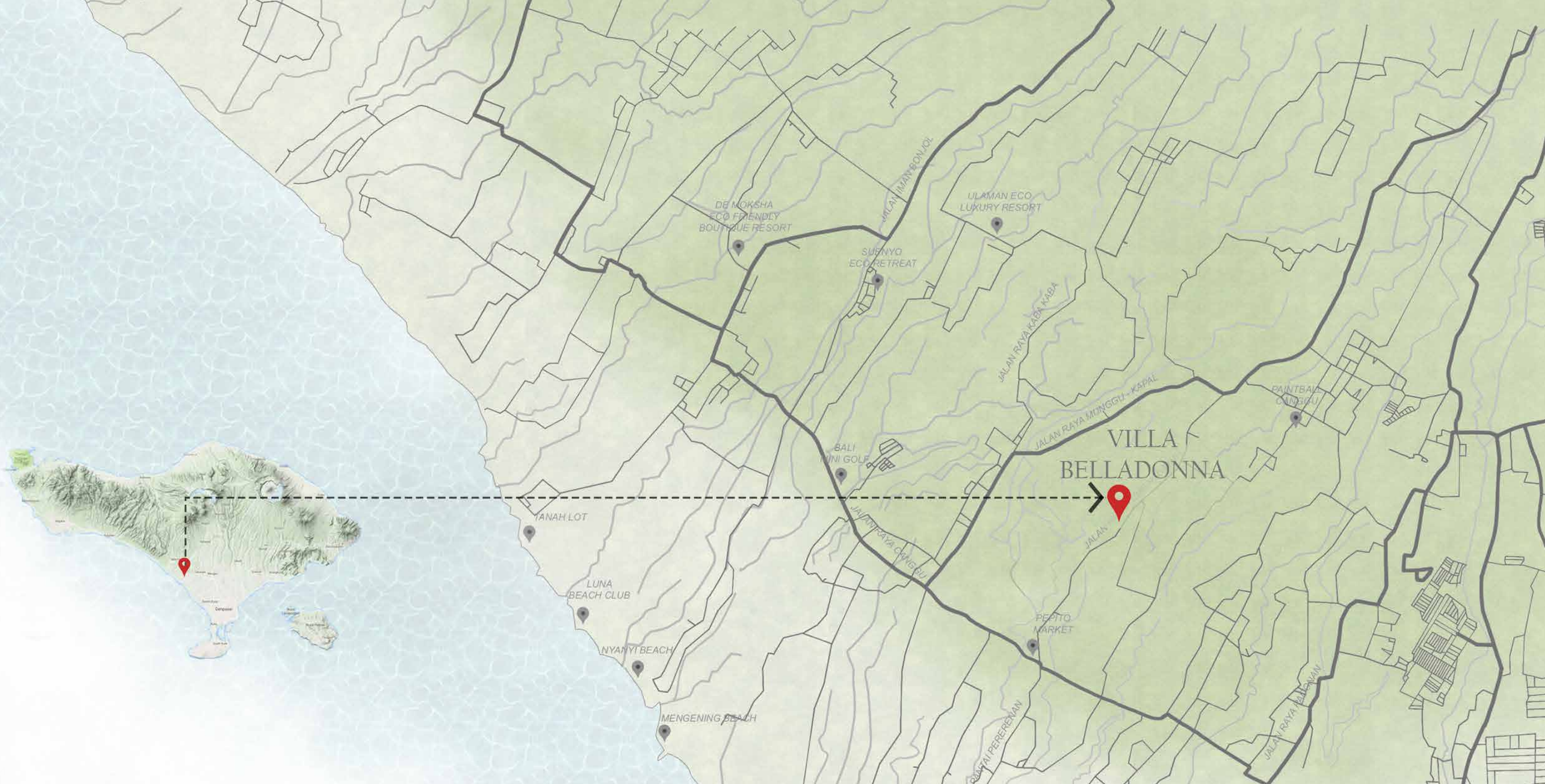
## CONTENT

CREDITS.....	06
CONTENT.....	07
WELCOME TO VILLA BELLADONNA.....	09
LOCATION.....	13
SITE PLAN.....	17
THE VILLA.....	21
LANDSCAPE.....	93
SUKYF ARCHITECTS.....	101

WELCOME TO  
VILLA BELLADONNA



# LOCATION





# SITE PLAN



# THE VILLA



**Villa Belladonna**  
964 sqm

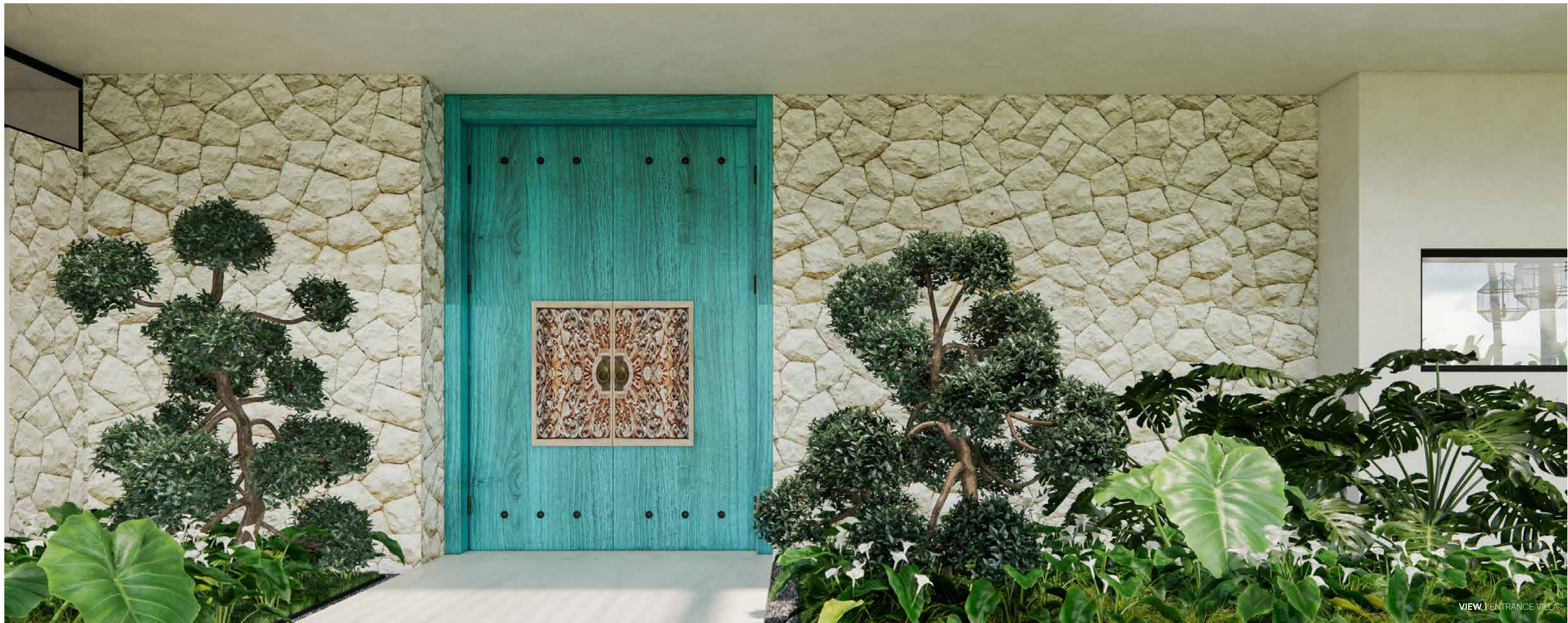
5 Bedroom Villa

**Sukyf Architects**  
Felipe Gonzalez

Tumbak Bayuh

Nestled in the heart of Canggu, lies a hidden gem that effortlessly marries the energetic pulse of the city with the serenity of a secluded retreat. This enchanting villa, a sanctuary in the midst of the bustling surroundings, offers a haven of tranquility, overlooking picturesque rice fields that dance in the soft tropical breeze. Canggu is renowned for its vibrant energy, eclectic culture, and dynamic atmosphere. It's a place where modernity collides with tradition, creating a tapestry of experiences for visitors. Amidst the lively streets and trendy cafes, this villa emerges as an oasis, providing an escape from the hustle and bustle without sacrificing the convenience of being in the heart of the action. One of the villa's most enchanting features is its unobstructed view of the sprawling rice fields. From the moment the sun paints the sky with hues of orange and pink to the tranquil moonlit nights, the panorama becomes a living canvas that evolves with each passing moment.

VIEW | VILLA BELLADONNA

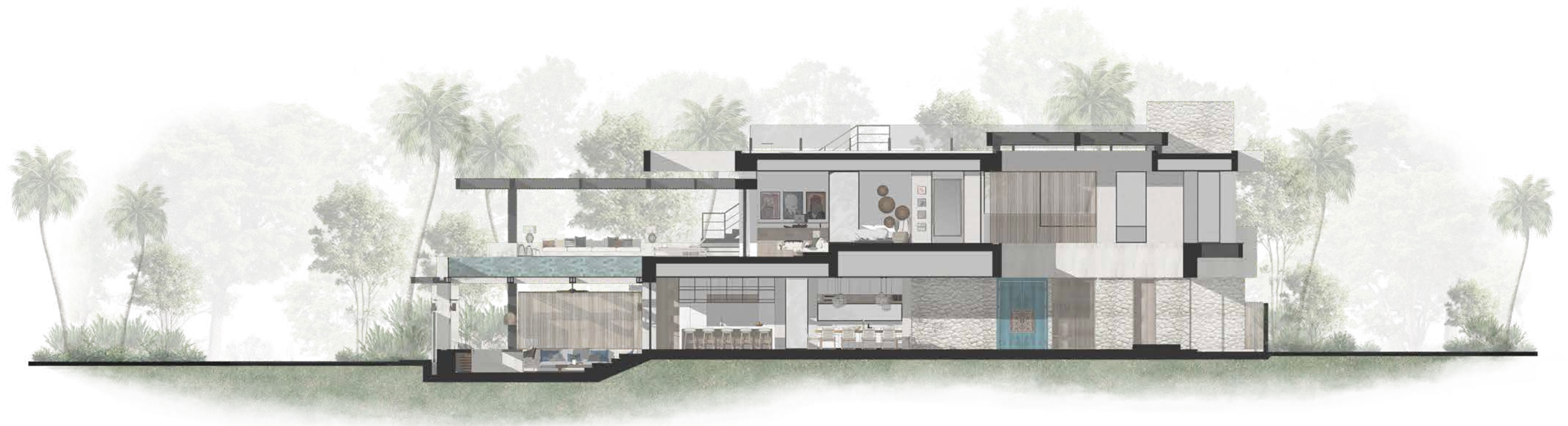


VIEW | ENTRANCE VILLA

**ENTRANCE |** The villa's entrance is a harmonious blend of traditional and tropical elements. A vibrant green Balinese door, with its intricately carved wooden panels and gilded accents, stands out as the centerpiece of the entrance. This iconic door is not only a striking visual element but also a symbol of the island's rich cultural heritage. The intricate design, featuring mythical motifs and delicate floral patterns, captures the essence of Balinese craftsmanship and spirituality. Framed by a lush tropical landscape, with verdant foliage that enhances the serene ambiance, the door is a captivating introduction to the villa. As you approach, palimanan stepping stones guide your way, their natural texture echoing the organic beauty of the surroundings. The lime stone walls, with their soft, earthy tones, create a tranquil backdrop, while a black iron pergola adds a modern contrast, its sleek lines offering a subtle elegance that complements the tropical setting.







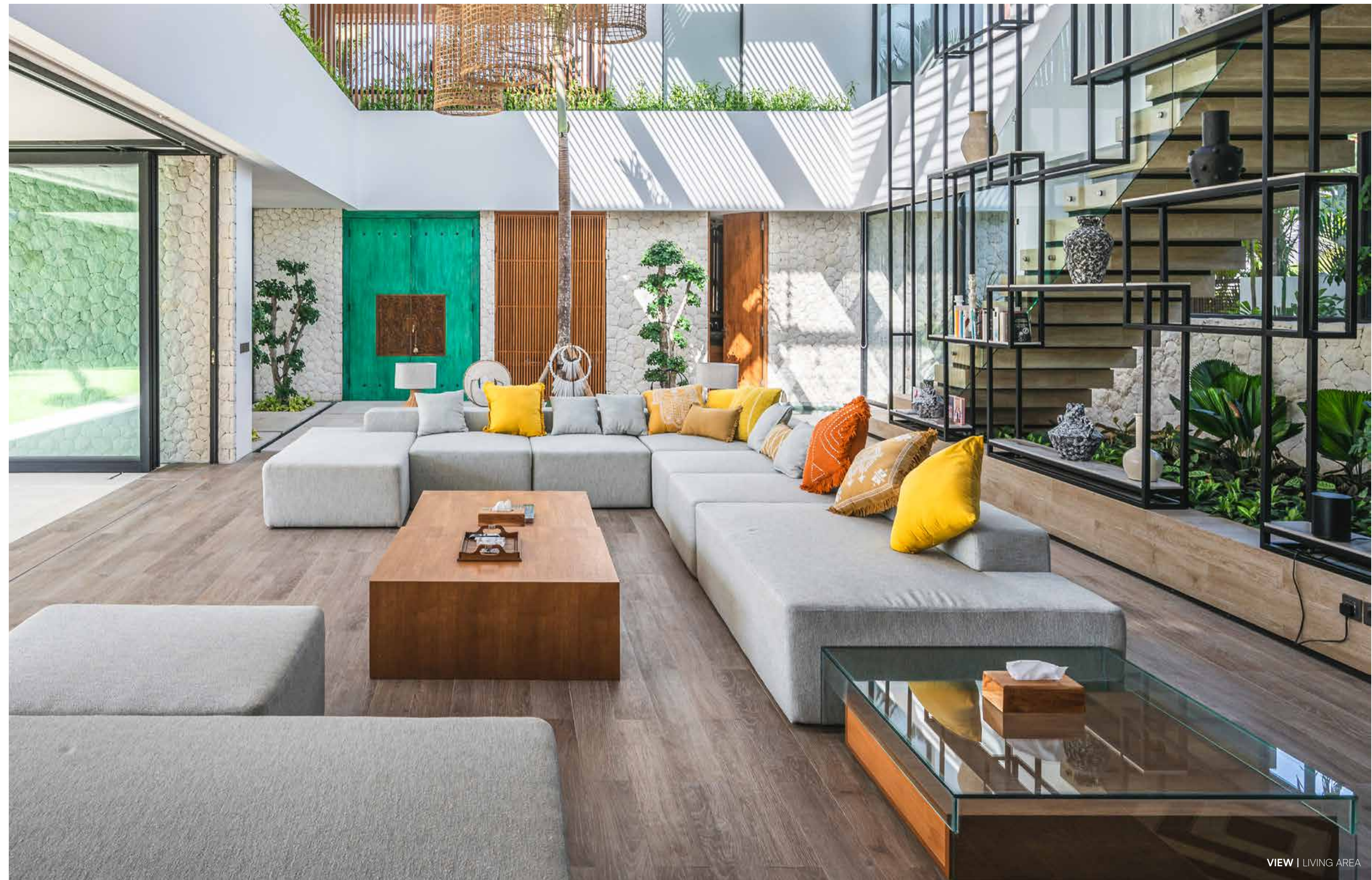












**LIVING AREA |** The living room is a perfect blend of modern comfort and natural elegance. A spacious gray sofa anchors the space, offering a plush seating area adorned with vibrant yellow cushions that bring a lively burst of color to the neutral palette. Overhead, a long rattan lamp casts a warm, inviting glow, its natural texture adding an organic touch that complements the room's design. Nearby, a sleek mini bar with a black marble countertop introduces a touch of luxury, seamlessly integrating with the earthy tones of the wooden ceiling and walls. The combination of these elements creates a cozy yet sophisticated atmosphere, where modern style meets natural charm.



VIEW | LIVING AREA - MINI BAR

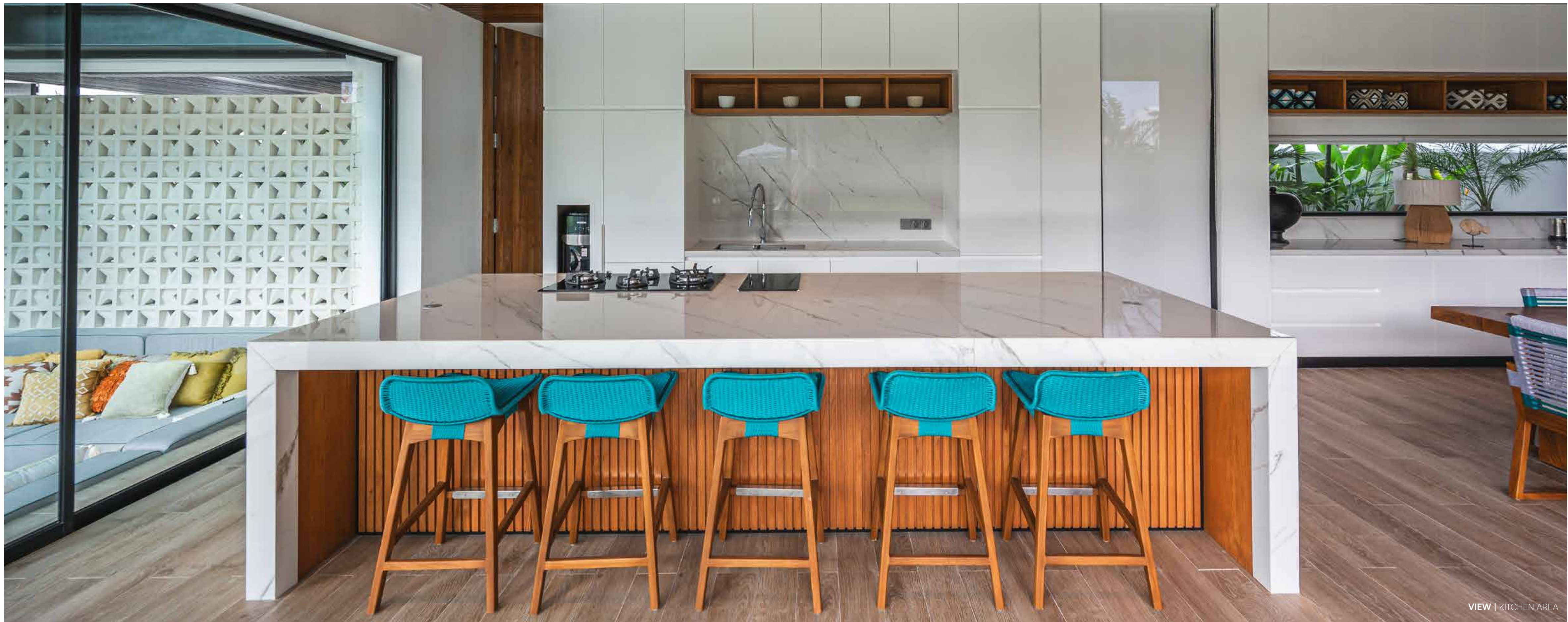


**POOL** | Water, the conductive thread weaving through the architectural tapestry, transforms this sanctuary into a haven where serenity and elegance coalesce seamlessly. As you approach the entrance, the journey begins with a liquid serenade. The villa's architectural poetry reaches its crescendo with a cascading waterfall that descends from the first floor to the ground, creating a visual and auditory spectacle. As water gracefully descends, it brings with it a sense of purification, cleansing the air with each drop and enhancing the villa's ambiance with the soothing melody of nature's own music.

Throughout the villa, water serves as the conduit connecting residents to the lush landscape that envelops Canggu. Floor-to-ceiling windows and open spaces invite the outdoors in, blurring the boundaries between the villa's interior and the natural world. It's an invitation to immerse oneself in the sights and sounds of Bali, where water and nature coexist in perfect harmony.



VIEW | POOL AREA



VIEW | KITCHEN AREA

**KITCHEN AND DINING** | The kitchen is a harmonious blend of modern elegance and natural warmth. Pristine white cabinets line the walls, offering a clean and fresh look that brightens the space. At the center stands a stunning marble kitchen island, its smooth surface adding a touch of luxury and serving as both a functional workspace and a gathering spot. Complementing the island is a wooden dining table, its rich, natural grain bringing warmth and a sense of rustic charm to the room. Adding a playful pop of color, vibrant blue stools are neatly arranged around the island, creating a lively contrast that enlivens the kitchen with a fresh and inviting atmosphere.





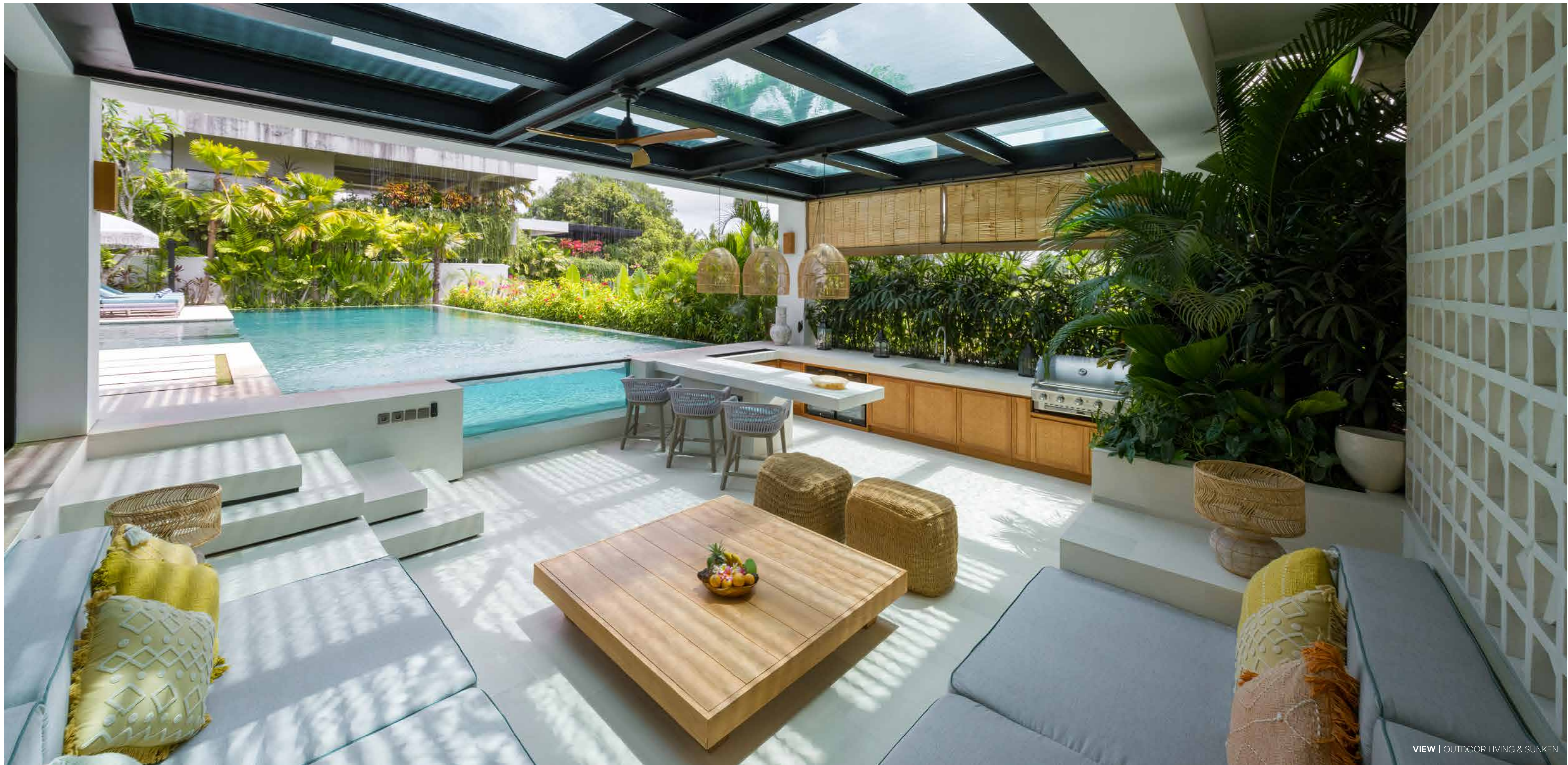
VIEW | DINING AREA



VIEW | SUNKEN'S BBQ AREA



**OUTDOOR LIVING & SUNKEN** | The sunken living area is a stylish outdoor retreat, seamlessly blending comfort and functionality. At one end, a dedicated BBQ area features woven cabinets that add a touch of rustic texture while providing ample storage for grilling essentials. The seating area is anchored by a sleek gray sofa, offering a cozy spot to relax and enjoy the surroundings. In front of the sofa, a wooden coffee table serves as a central gathering point, its natural finish complementing the earthy tones of the space. Behind the seating area, a backdrop of roster blocks adds a unique architectural element, combining form and function by allowing light and air to flow through while enhancing the space's aesthetic appeal.





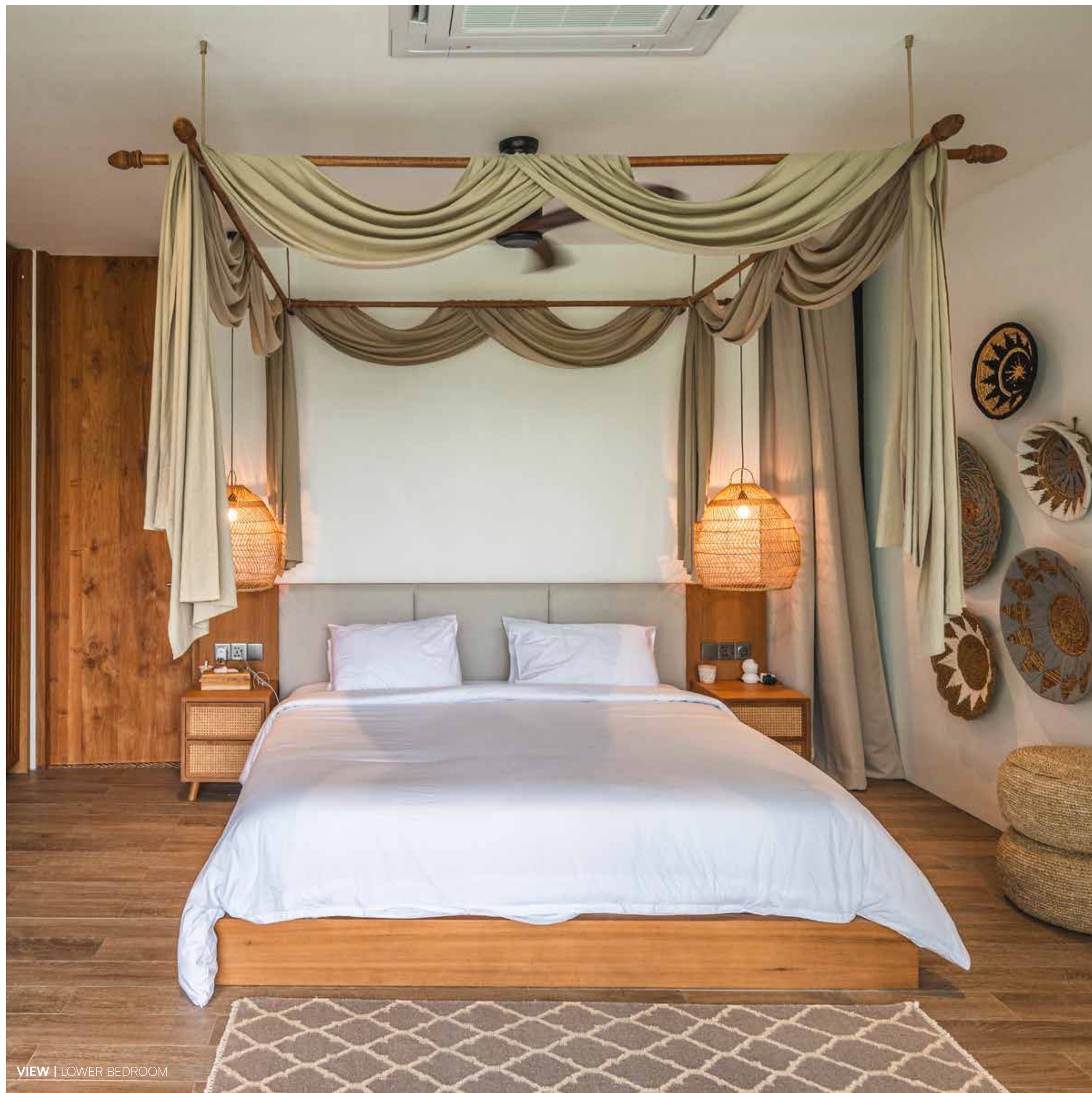
VIEW | LOWER BEDROOM



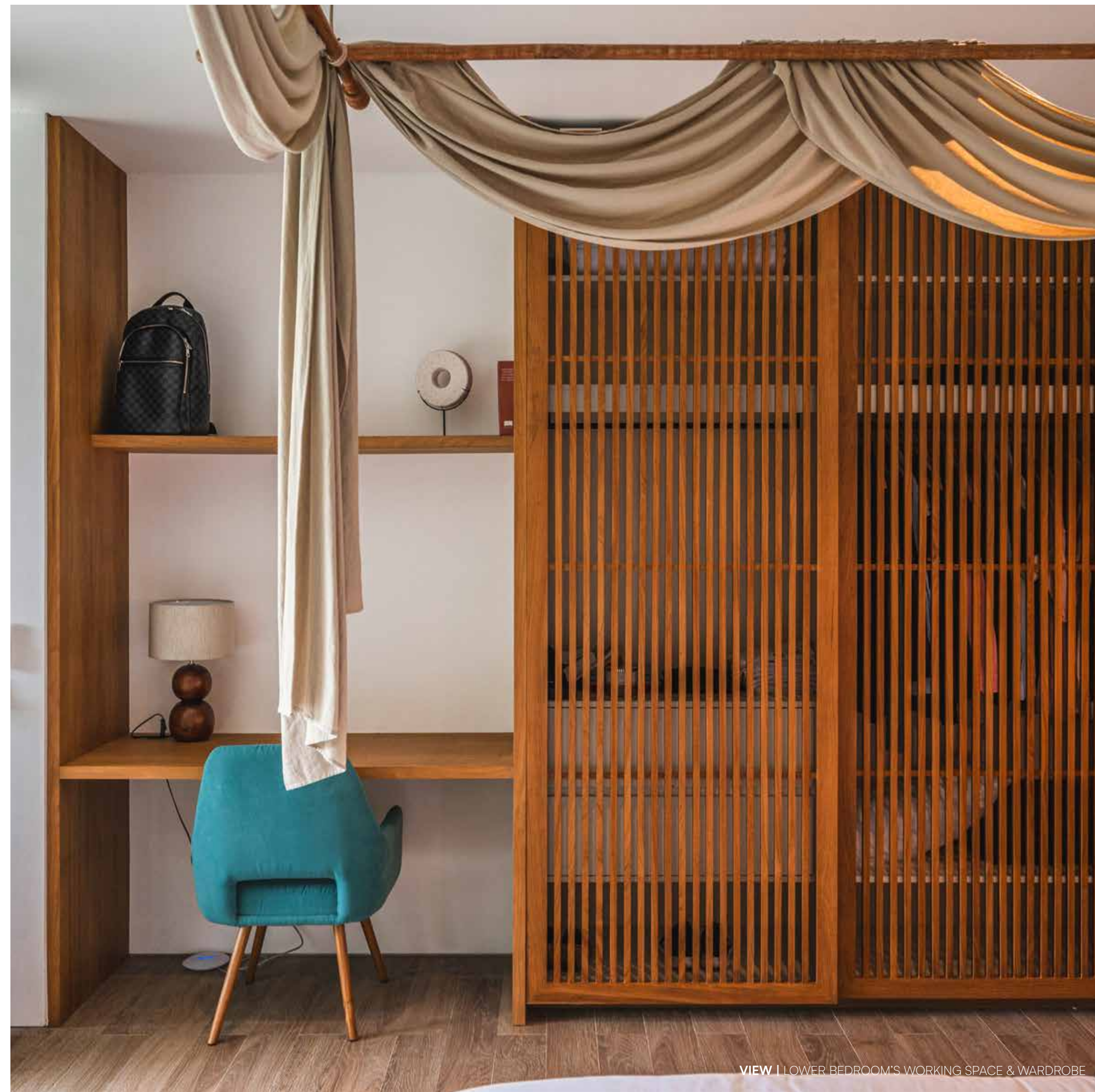
**LOWER BEDROOMS & BATHROOMS** | The bedroom is a serene retreat, beautifully designed with a blend of natural textures and tropical elements. Tropical wallpaper envelops the walls, bringing the lush vibrancy of the outdoors inside and setting a calming, nature-inspired atmosphere. The centerpiece of the room is a wooden bed base, its sturdy and minimalist design grounding the space with warmth and simplicity. On either side of the bed, hanging rattan round shelves serve as unique bedside tables, each paired with a bulb that doubles as a pendant lamp, casting a soft, ambient glow. Adding to the room's cozy charm, a rattan armchair is paired with a matching round rattan table, creating a perfect spot for relaxation. This thoughtful combination of materials and design elements makes the bedroom a harmonious blend of comfort and natural beauty.



VIEW | LOWER BEDROOM



VIEW | LOWER BEDROOM



VIEW | LOWER BEDROOM'S WORKING SPACE & WARDROBE



VIEW | STUDY ROOM



VIEW | STUDY ROOM

**STUDY ROOM |** The study room is a thoughtfully designed space that blends functionality with cozy comfort. At its heart is a study desk paired with a wooden cabinet, offering ample storage and a warm, natural touch. A sleek gray study chair provides both style and comfort, ensuring an inviting workspace. Adjacent to the desk, a bay window sofa with a wooden cover creates a serene nook for reading or relaxing, enhanced by the surrounding wooden shelving that adds both practicality and charm. This combination of elements creates a study room that is both efficient and welcoming, providing an ideal environment for focused work and leisurely moments.

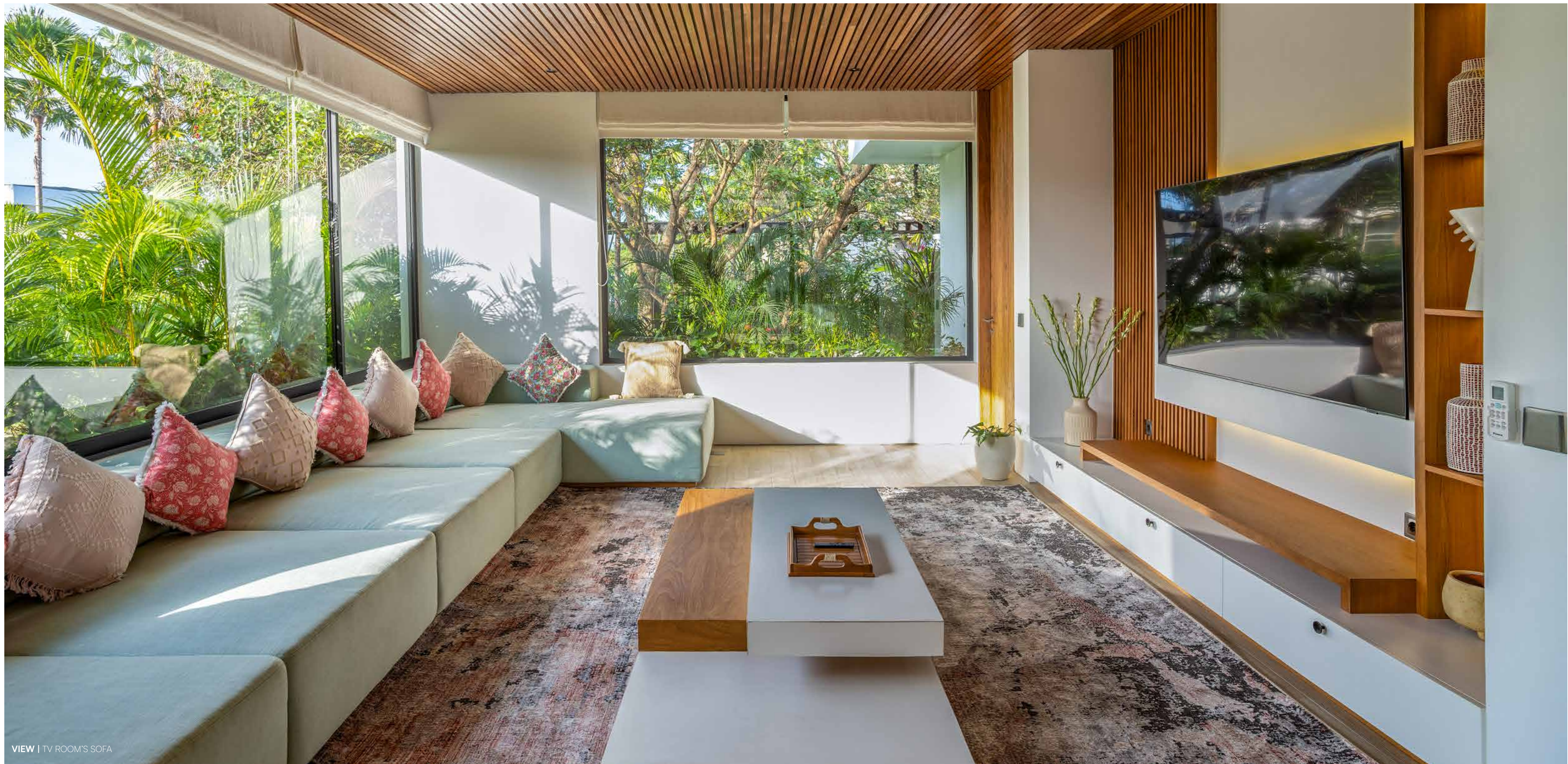


VIEW | TV ROOM



**TV ROOM |** The TV room is a stylish and inviting space designed for relaxation and entertainment. A soft blue long sofa, adorned with colorful cushions, serves as the centerpiece, offering both comfort and a vibrant splash of color. In the center of the room, a wooden coffee table adds a touch of warmth and functionality, perfectly complementing the sofa. The TV backdrop features elegant wooden slats, creating a sophisticated and textured focal point that enhances the room's aesthetic. Flanking the backdrop, wooden shelving provides ample space for media and decor, while a sleek white drawer offers additional storage. This thoughtful combination of elements creates a TV room that is both cozy and visually appealing, ideal for enjoying movies and casual gatherings.

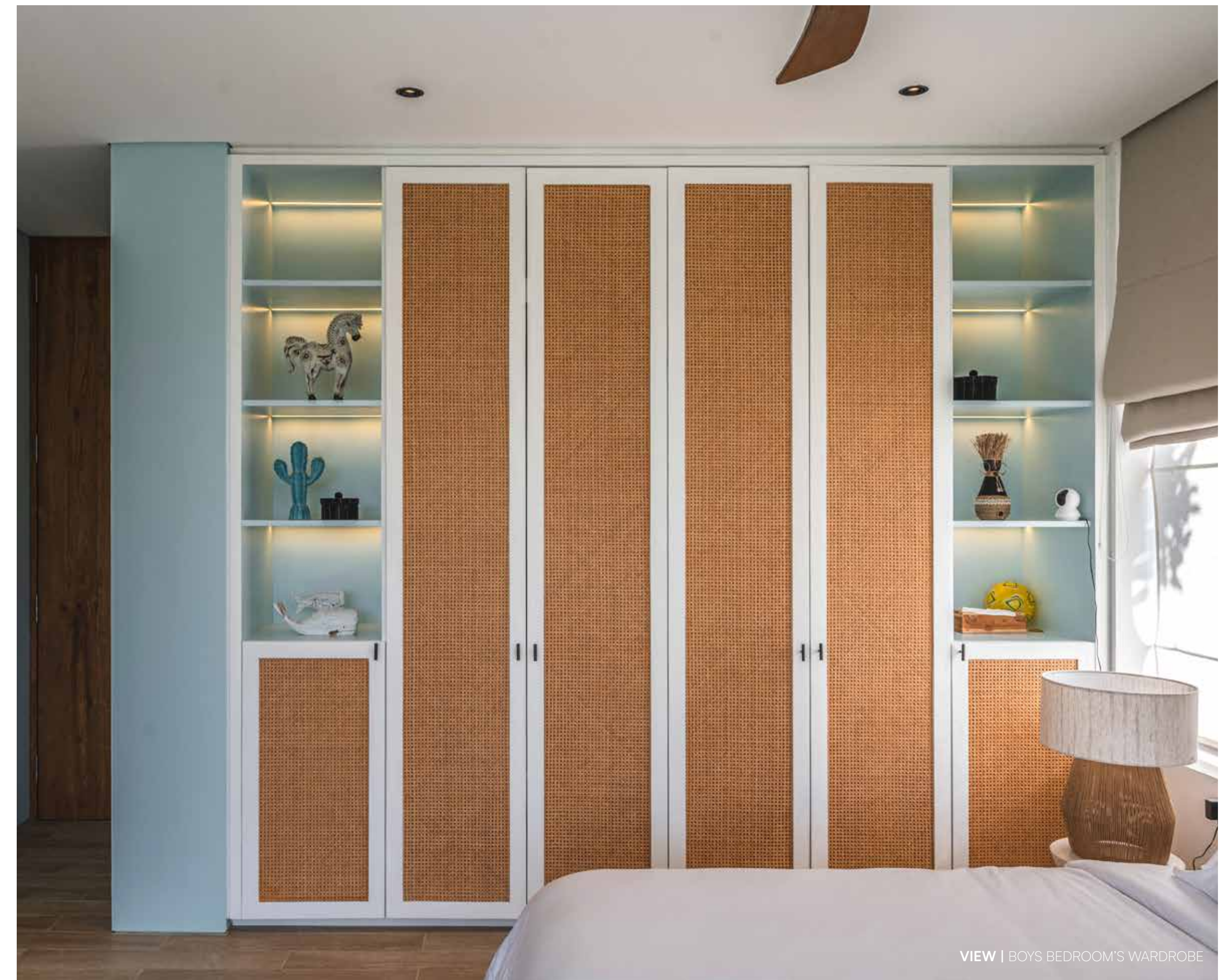




VIEW | TV ROOM'S SOFA



VIEW | BOYS BEDROOM

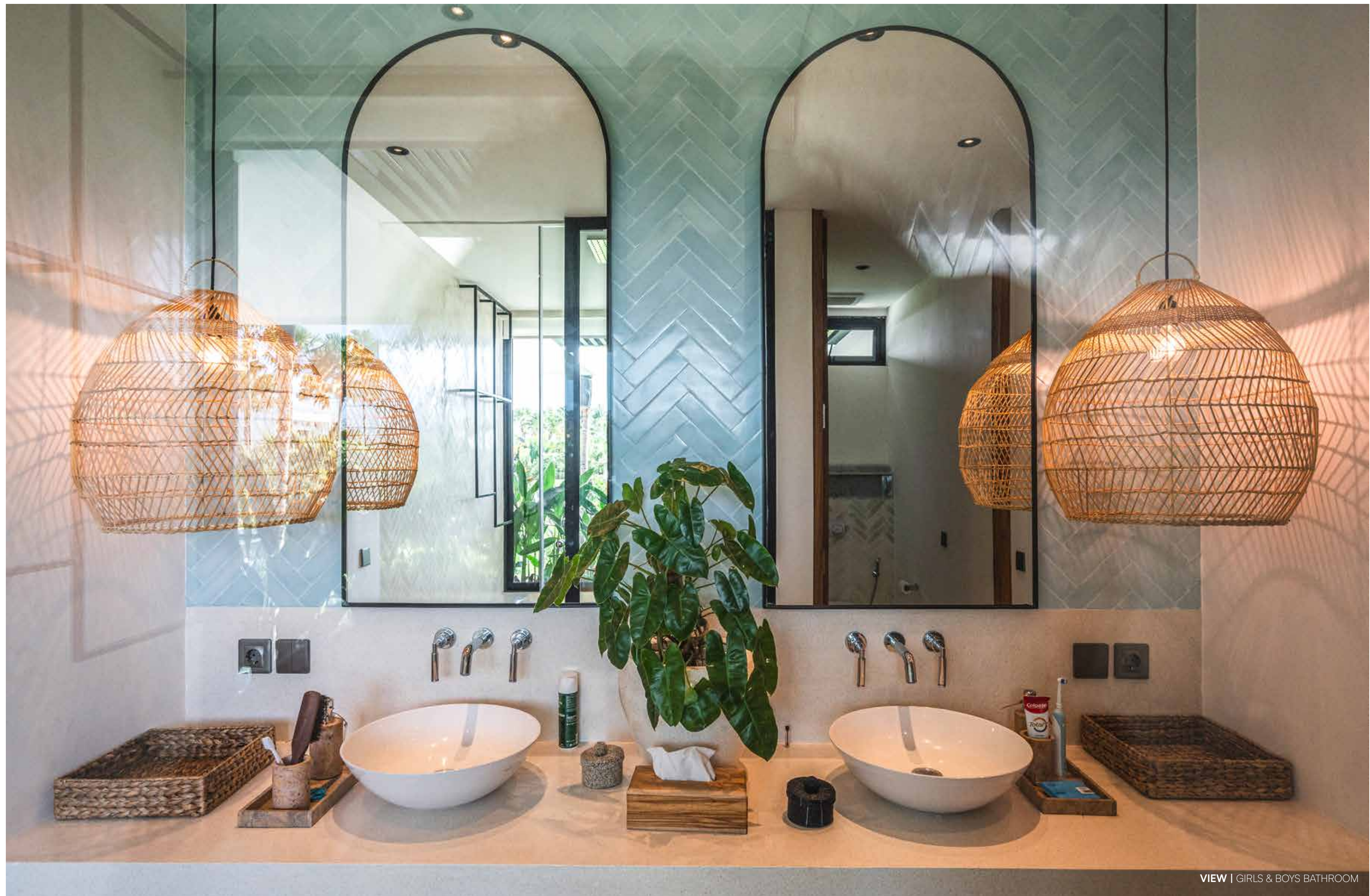


VIEW | BOYS BEDROOM'S WARDROBE

**BOYS BEDROOM** | The boy's bedroom is a serene and inviting space, thoughtfully designed with a combination of white and soft blue color on the walls that creates a calming atmosphere. The wardrobe combines white and rattan, offering a fresh and airy look while adding a natural touch to the room. The wooden bed base brings a sense of warmth and durability, perfectly complementing the soft blue tones. This harmonious combination of gentle colors and natural textures results in a tranquil and stylish bedroom, ideal for both restful nights and imaginative play.

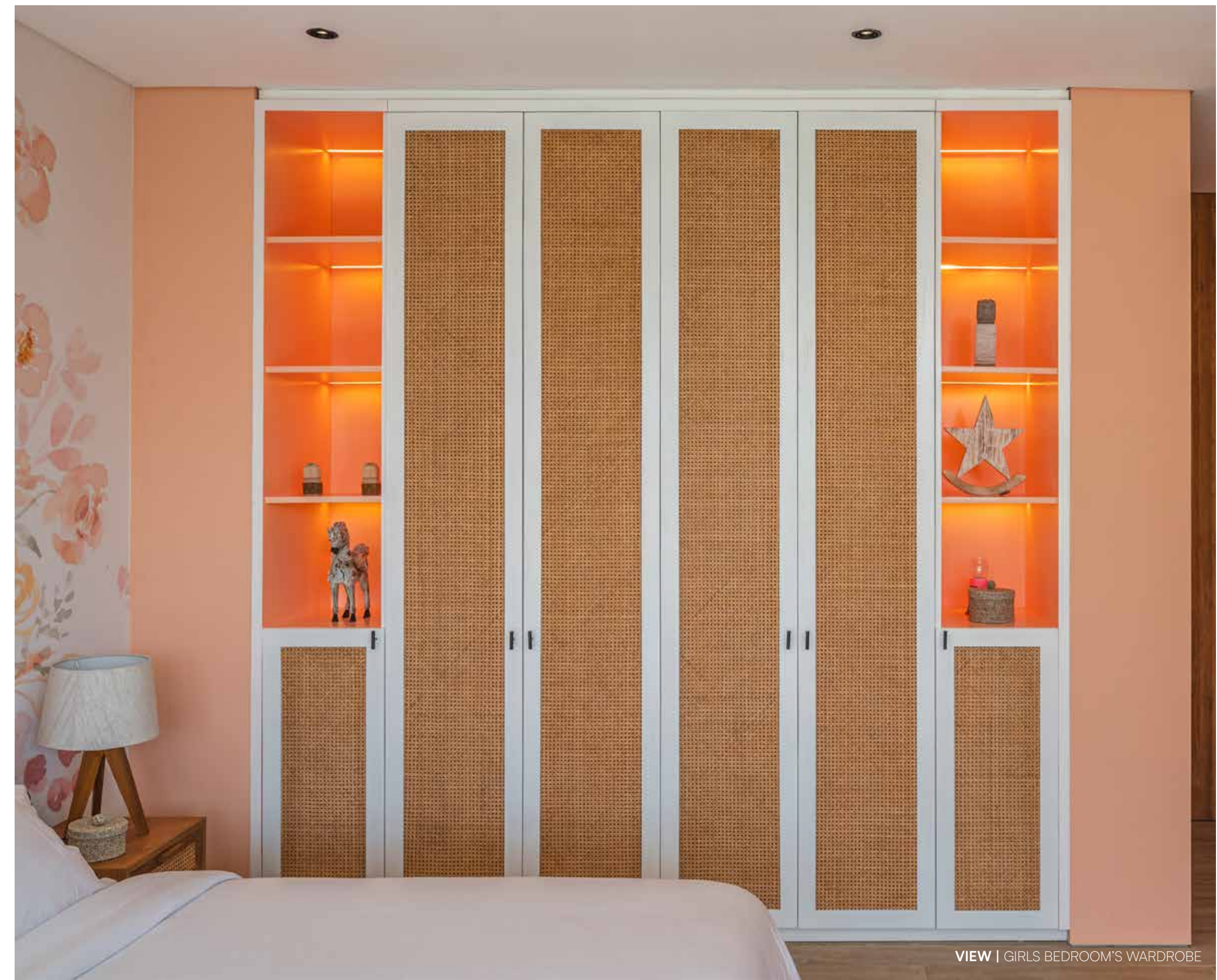


VIEW | UPPER BEDROOM TERRACE



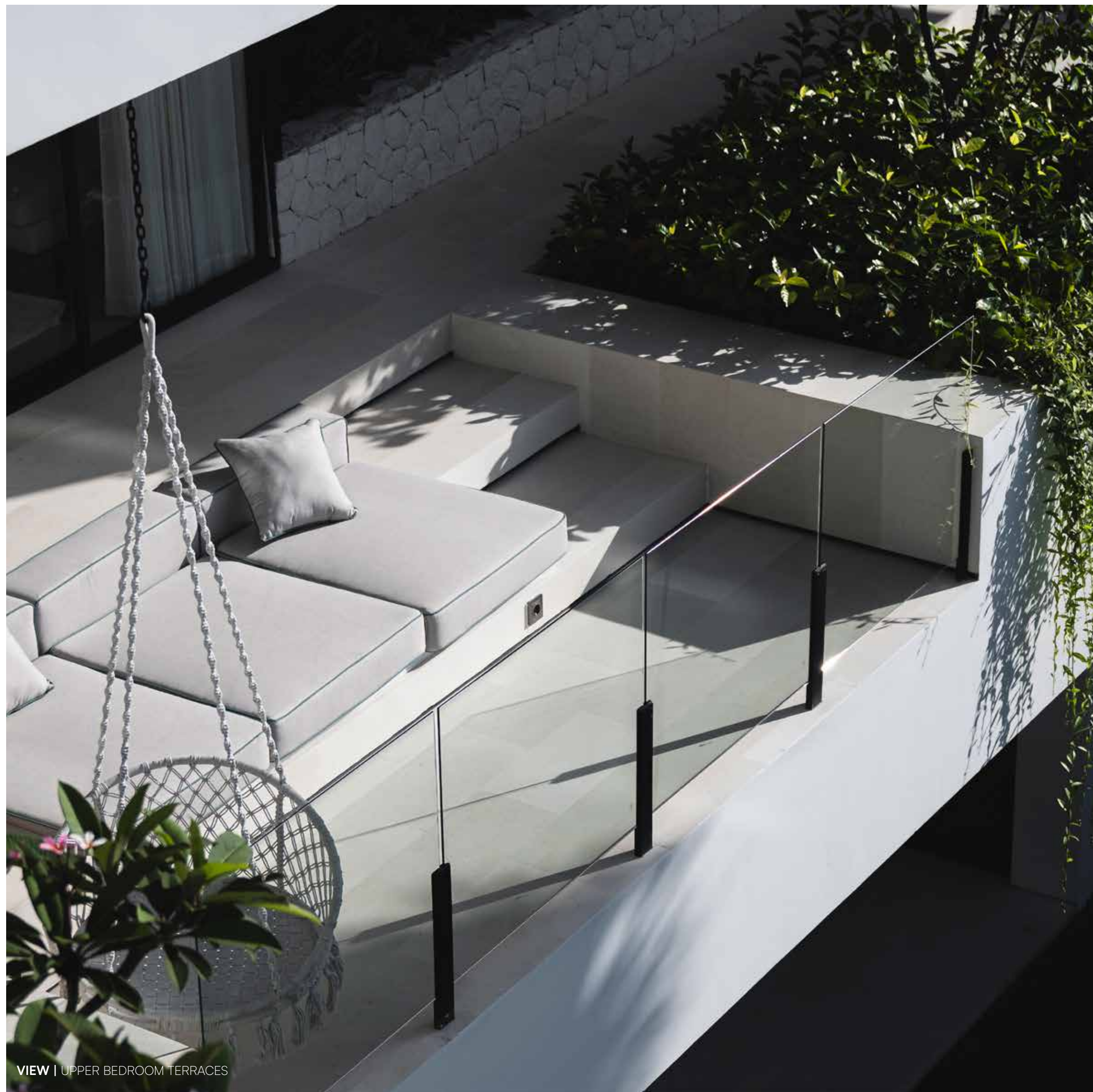


VIEW | GIRLS BEDROOM



VIEW | GIRLS BEDROOM'S WARDROBE

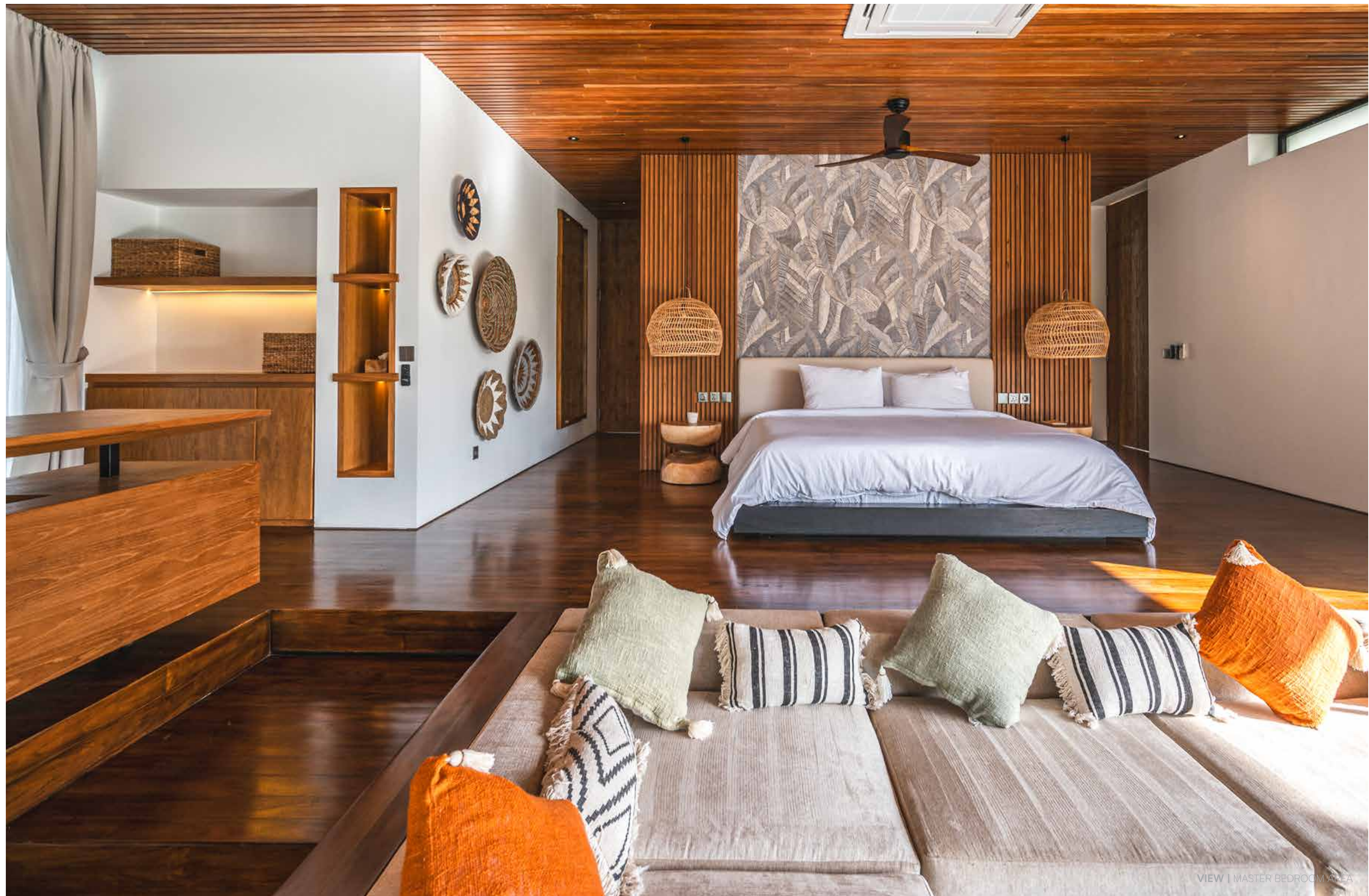
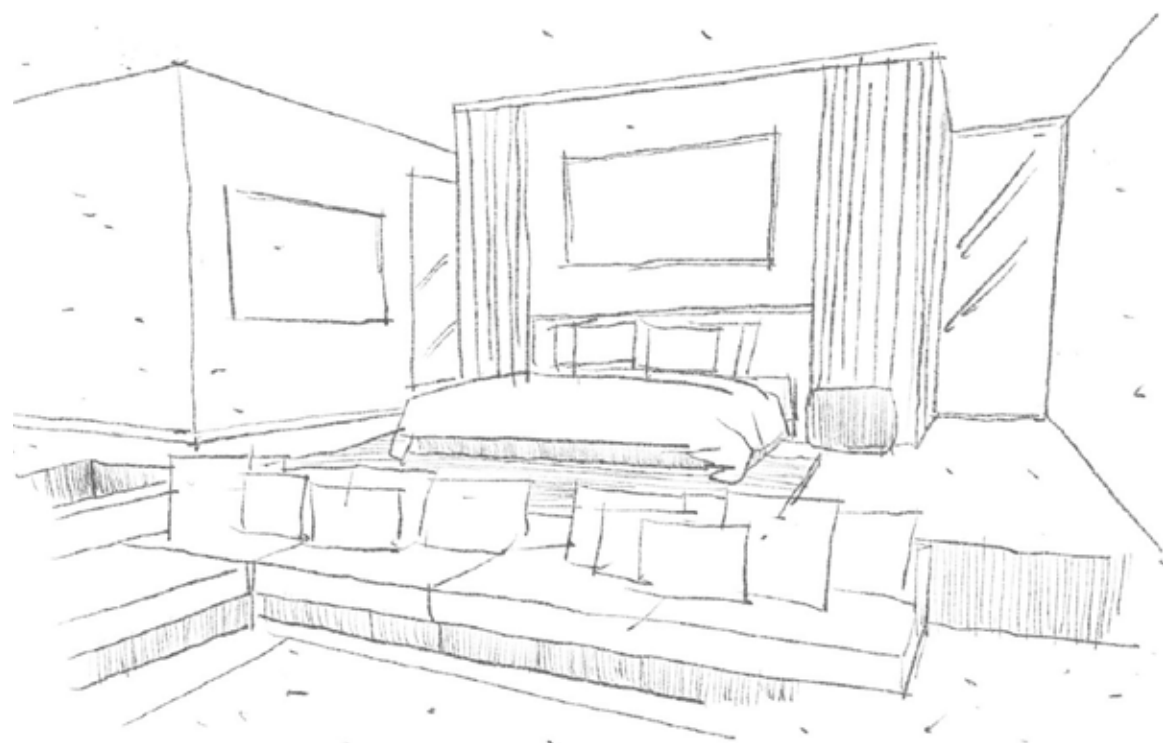
**GIRLS BEDROOM** | The girl's bedroom is a charming retreat, brimming with playful elegance and vibrant colors. The floral wallpaper on the wall behind the two beds adds a whimsical touch, creating a lush, dreamy backdrop. Each bed is adorned with a pink headboard, offering a cheerful pop of color that complements the room's theme. A matching pink wardrobe enhances the room's cohesive look, while the white and rattan door introduces a light, natural element that brightens the space. This delightful combination of floral patterns, pink accents, and natural textures creates a warm and inviting atmosphere, making the bedroom a perfect haven for rest and imagination.



VIEW | UPPER BEDROOM TERRACES

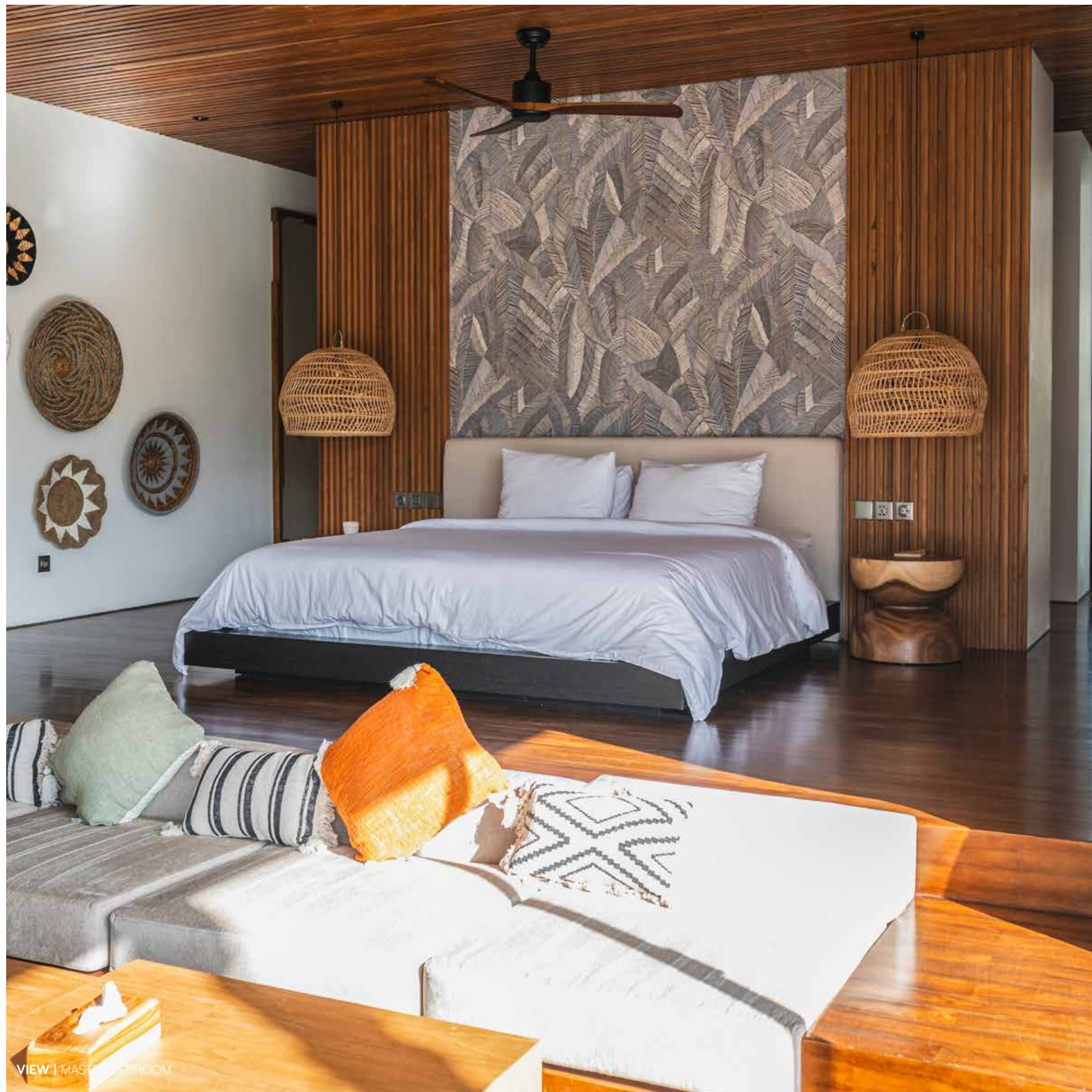


VIEW | UPPER BEDROOM TERRACES

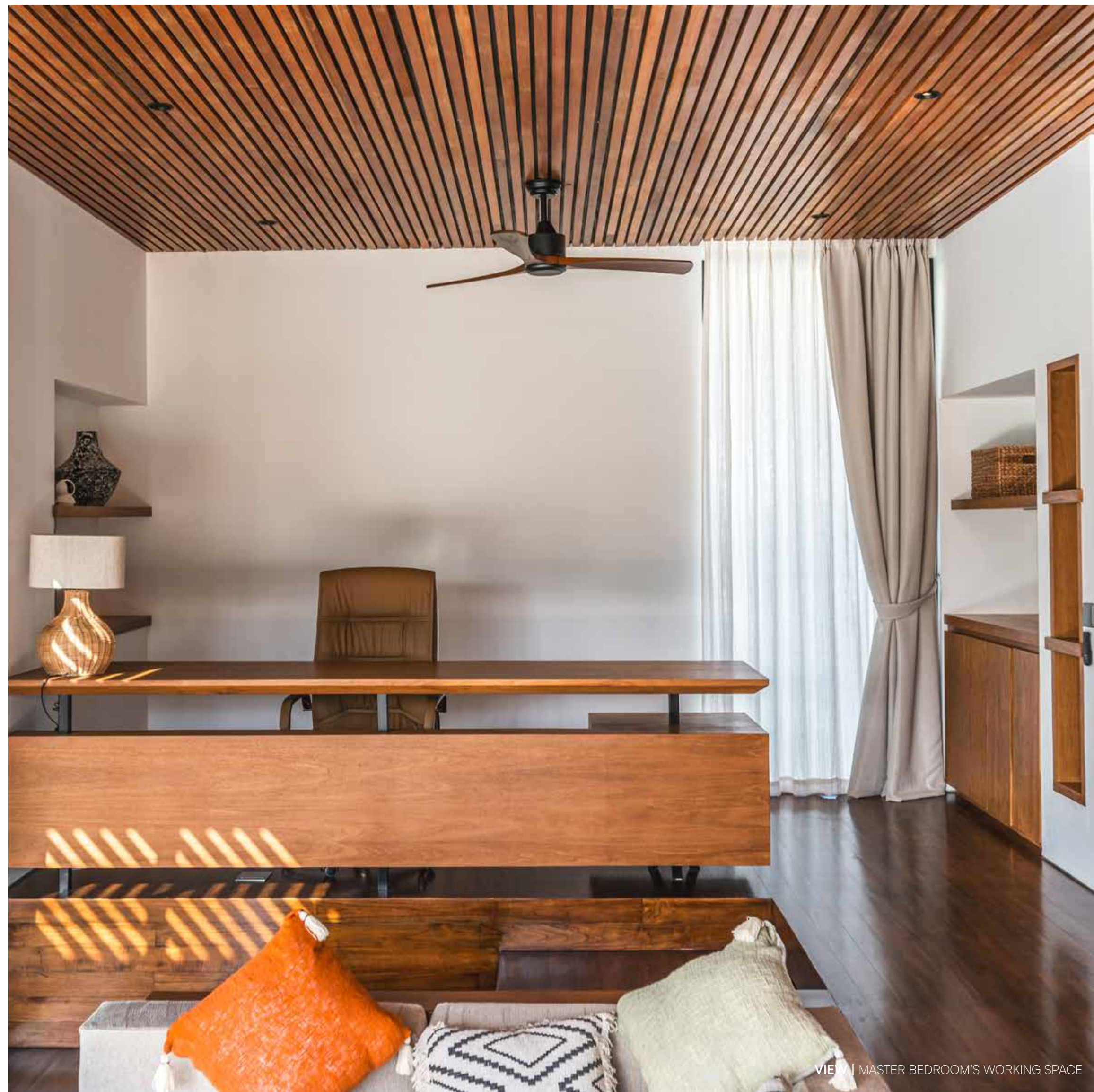


VIEW | MASTER BEDROOM AREA

**MASTER BEDROOM** | The master bedroom is a refined sanctuary that seamlessly blends natural elegance with contemporary style. The room features a rich wooden parquet floor that adds warmth and texture underfoot. Above, the wooden slats ceiling introduces a sophisticated architectural detail, enhancing the room's cozy and inviting atmosphere. The backdrop of the bed is adorned with tropical wallpaper, bringing a lush, vibrant touch that complements the room's overall aesthetic. Flanking the bed are round wooden bedside tables, their clean lines and natural finish adding a subtle touch of modernity. Across the room, a wooden working desk provides a functional and stylish workspace, seamlessly integrating with the room's natural materials. This harmonious combination of elements creates a master bedroom that is both serene and stylish, offering a perfect retreat from the everyday.

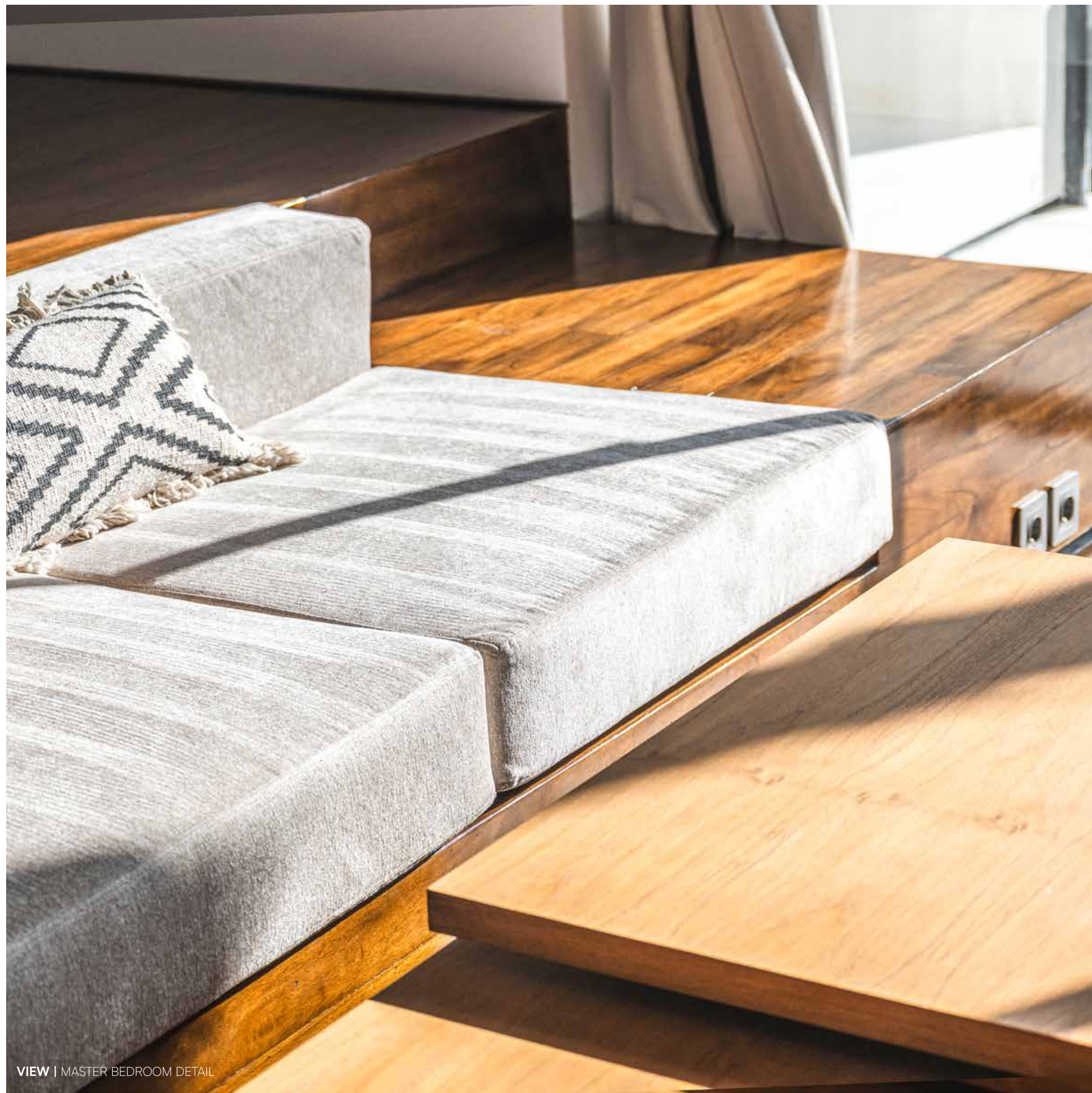


VIEW | MASTER BEDROOM

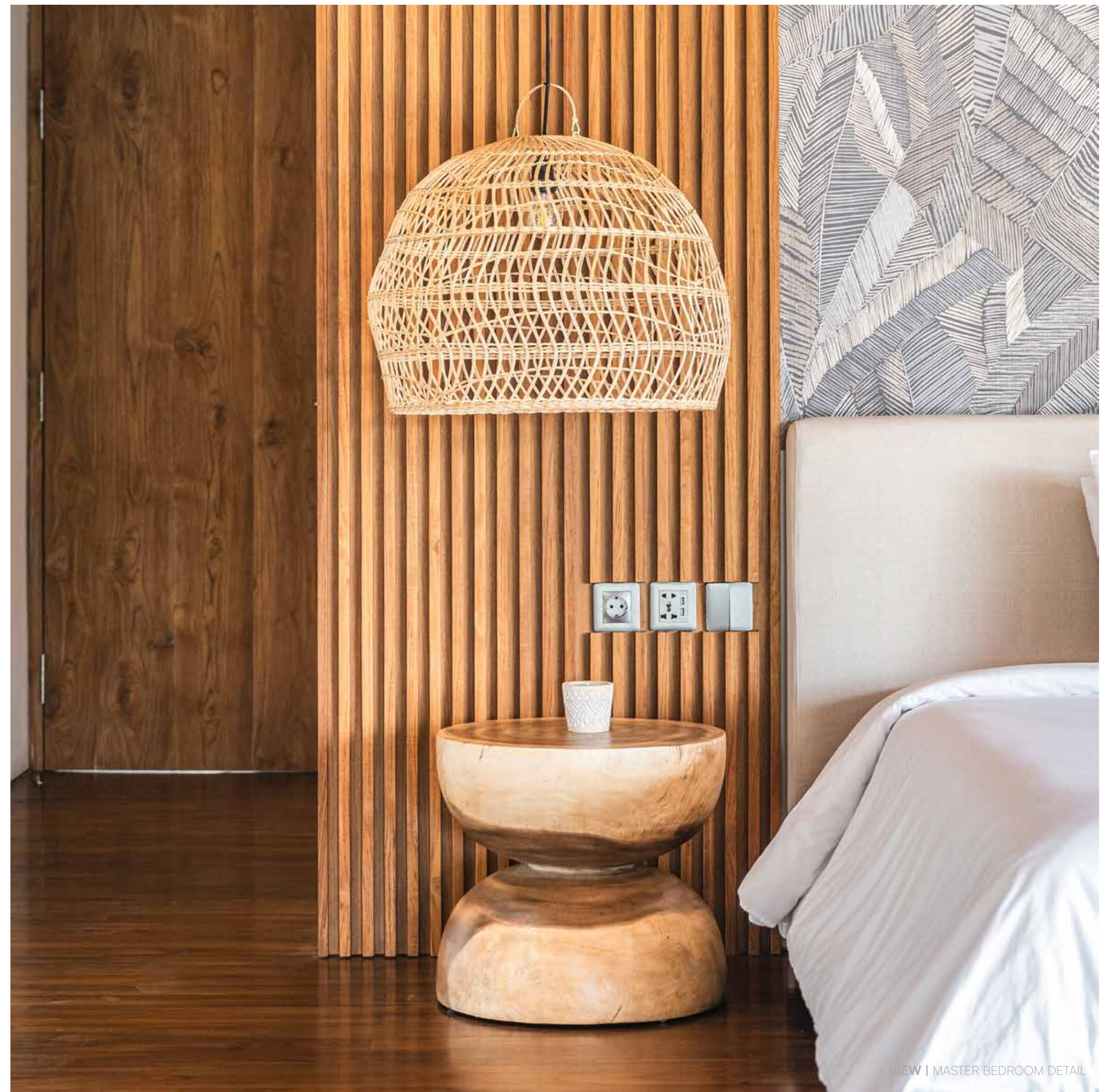


VIEW | MASTER BEDROOM'S WORKING SPACE





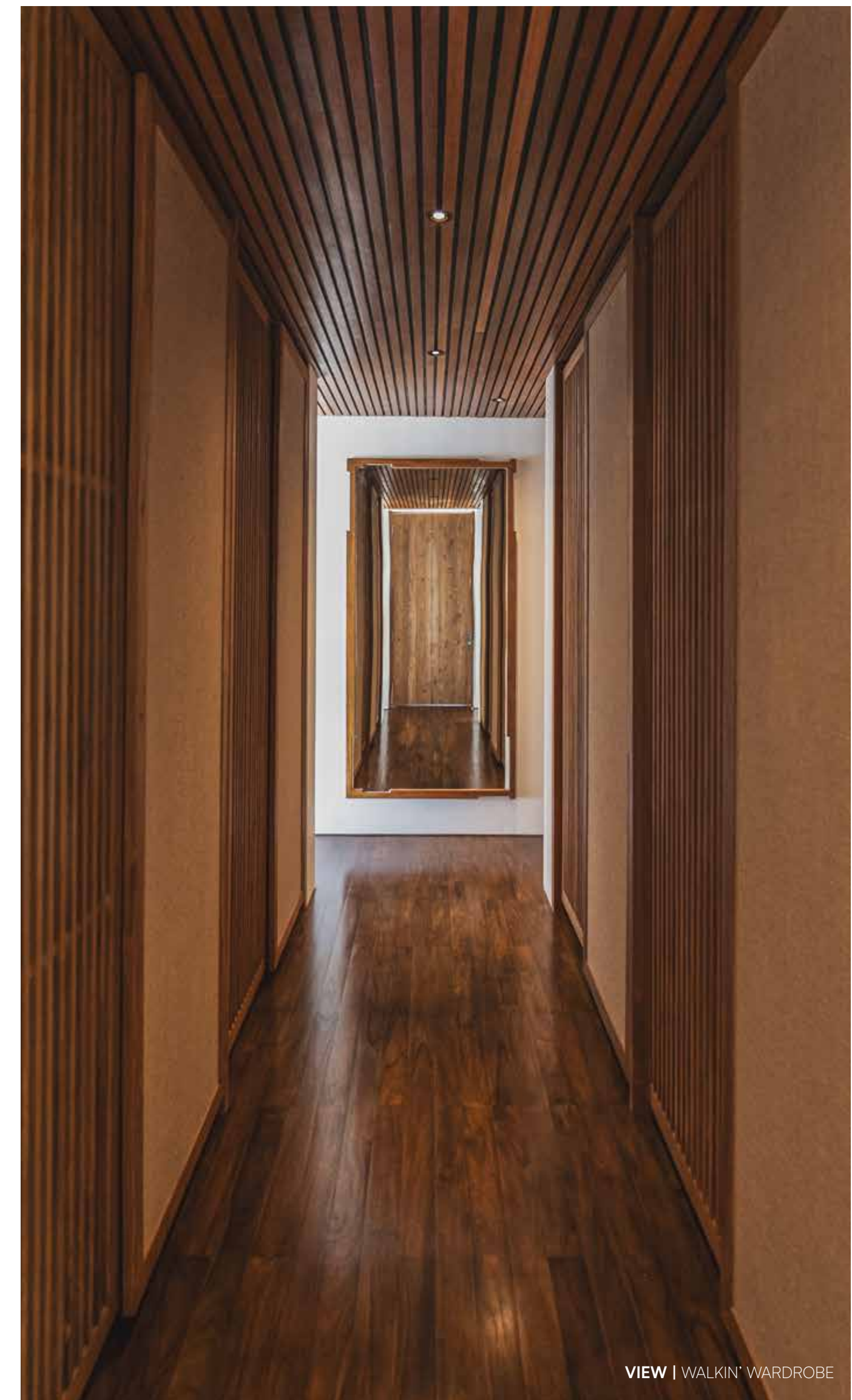
VIEW | MASTER BEDROOM DETAIL



VIEW | MASTER BEDROOM DETAIL



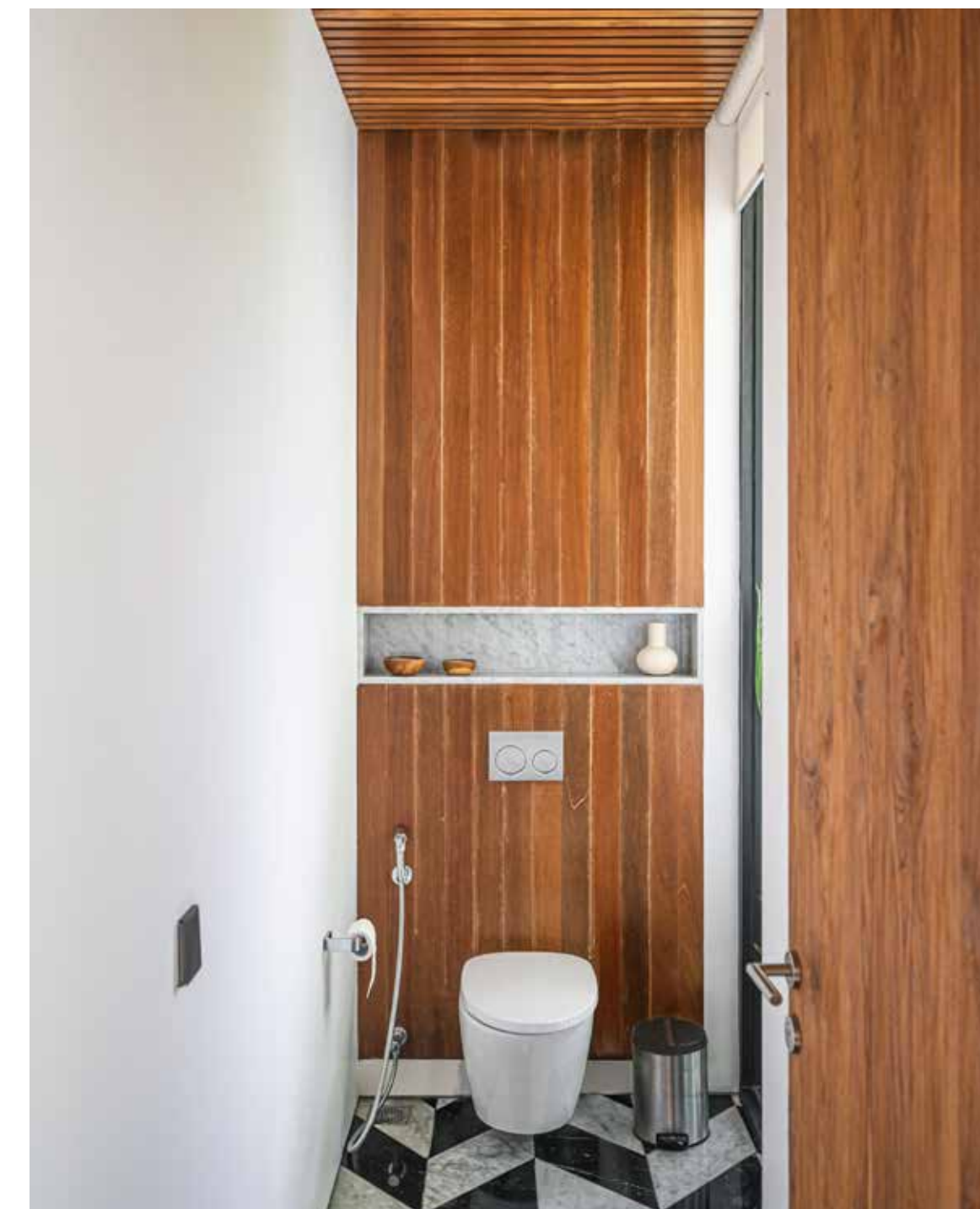
VIEW | MASTER BEDROOM'S SUNKEN AREA



VIEW | WALKIN' WARDROBE



VIEW | MASTER BATHROOM



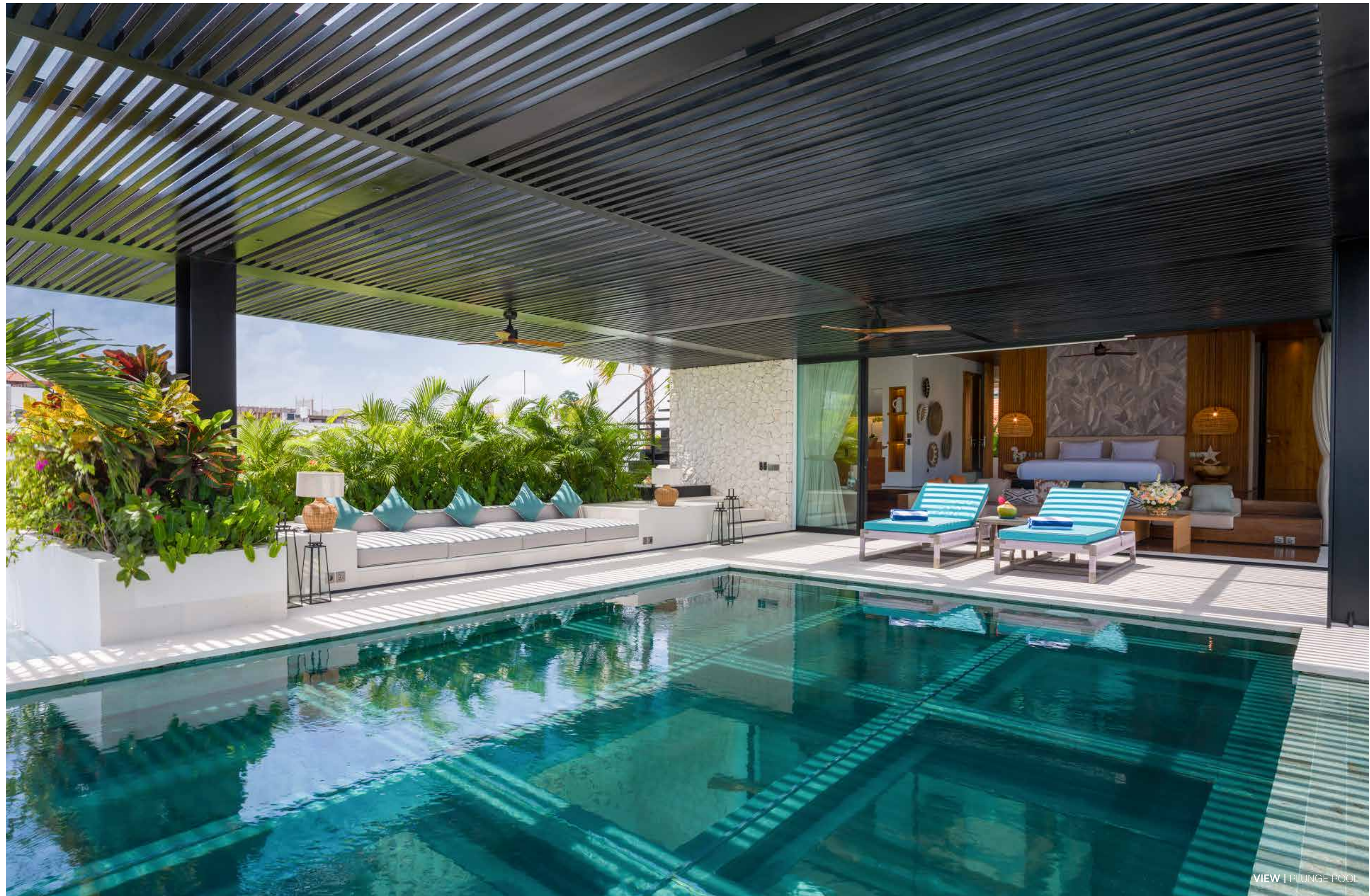
**MASTER BATHROOM** | The bathroom exudes a sophisticated blend of colors and textures, creating a space that's both stylish and tranquil. A striking green basin, paired with a sleek wooden drawer, serves as a functional centerpiece, offering a vibrant contrast against the natural warmth of the wood. The hydraulic tile floor adds intricate patterns and durability, grounding the room with its unique design. Complementing these elements is a luxurious black marble built-in bathtub, its rich, dark surface providing a dramatic focal point and an elegant touch of opulence. Together, these elements create a bathroom that is both modern and inviting, where bold colors and high-quality materials come together in perfect harmony.



VIEW | MASTER BATHROOM'S SHOWER



VIEW | MASTER BATHROOM'S BATHTUB



**PLUNGE POOL |** The plunge pool area is a vibrant and refreshing retreat designed for ultimate relaxation. The pool itself boasts a striking blue color, perfectly complemented by the vibrant blue sunbeds that surround it, creating a bold and inviting contrast. Adjacent to the pool, a cozy seating area features a gray sofa adorned with blue cushions, adding a touch of comfort and color. This thoughtfully designed space offers a harmonious blend of bold hues and soft textures, making it an ideal spot for lounging, soaking up the sun, and enjoying leisurely moments by the water.



# LANDSCAPE



VIEW | COURTYARD'S LANDSCAPE



VIEW | ENTRANCE'S LANDSCAPE

**LANDSCAPE** | The landscaping design effortlessly blurs the boundaries between the interior and the exterior, creating a sense of continuity. Lush greenery spills over from the surrounding jungle, finding its place within the carefully curated garden spaces both inside and outside the villa. Planter boxes, both inside and outside, act as miniature gardens, bringing the jungle vibe into every corner of the villa. Overflowing with tropical flora, they introduce a variety of textures, colors, and scents. The landscaping design incorporates natural materials such as stone and wood, providing a grounding contrast to the exuberant foliage.





VIEW | ENTRANCE'S LANDSCAPE



VIEW | TERRACE'S LANDSCAPE



VIEW | GARAGE'S LANDSCAPE



# FELIPE GONZALEZ JIMENEZ DE LA ESPADA

## ARCHITECT & DESIGNER

Felipe González Jiménez de la Espada leads an international team of professionals, emphasizing the importance of uniqueness in every moment to create distinctive experiences for clients, regardless of project scale. We translate diverse client wishes into functional and enduringly beautiful creations. With a blend of modern and traditional influences, our focus on quality ensures that luxury and simplicity exude elegance.

Since 1995, Felipe González Jiménez de la Espada has acquired an impressive portfolio of private, corporate and commercial clients in 15 countries around the world. Its headquarters are based in Madrid, Spain.

## THE PRACTICE

“The art of listening”. Founded in 1995, Sukyf is an internationally renowned architecture design studio. Recognized for its multidisciplinary approach and the talent of balancing functionality, aesthetics into each one their creations and designs. Sukyf Studio creates bespoke modern minimalist architecture, interiors, furnitures and product designs. The concept of blending exterior, interior and product design skills with context, culture and environment. We feel, we enjoy and the most important part of an studio firm we listen to our clients, spending time with them letting them open themselves to us in order to squeeze until the last drop of their personality in order to translate that into the character of each individual architecture or element that we design, always searching for the perfect fusion on elements for that one singular design.

Our purpose is to shift and exceed the expectations of every single one of our clients either private or corporate ones. Quality as a philosophy, passion on every single line, natural materials, simplicity, elegance and the maximum combination on three element, textures or colors on every creation drives you to an exceptional detail result. Innovation, timeless appeal, proportions and comfort as fundamentals on every design.



scan for videos



For further information :  
[www.sukyf.com](http://www.sukyf.com) | [info@sukyf.com](mailto:info@sukyf.com)



EST. 2023





# BELLADONNA

PRIVATE VILLA

[www.sukyf.com](http://www.sukyf.com) || [info@sukyf.com](mailto:info@sukyf.com)