

VATULELE  
PRIVATE VILLA

# VATULELE

PRIVATE VILLA

SUKYF & ARCHITECTS





## DESIGN BY

FELIPE GONZALEZ & MERSUKA DOPAZO

## ARRANGED BY

EKHO ADI PUTRA

## TEXT BY

OKTAVIRA PARAMITA  
NICOLAS GONZALEZ

## ILLUSTRATION BY

DENI YUSRIZAL

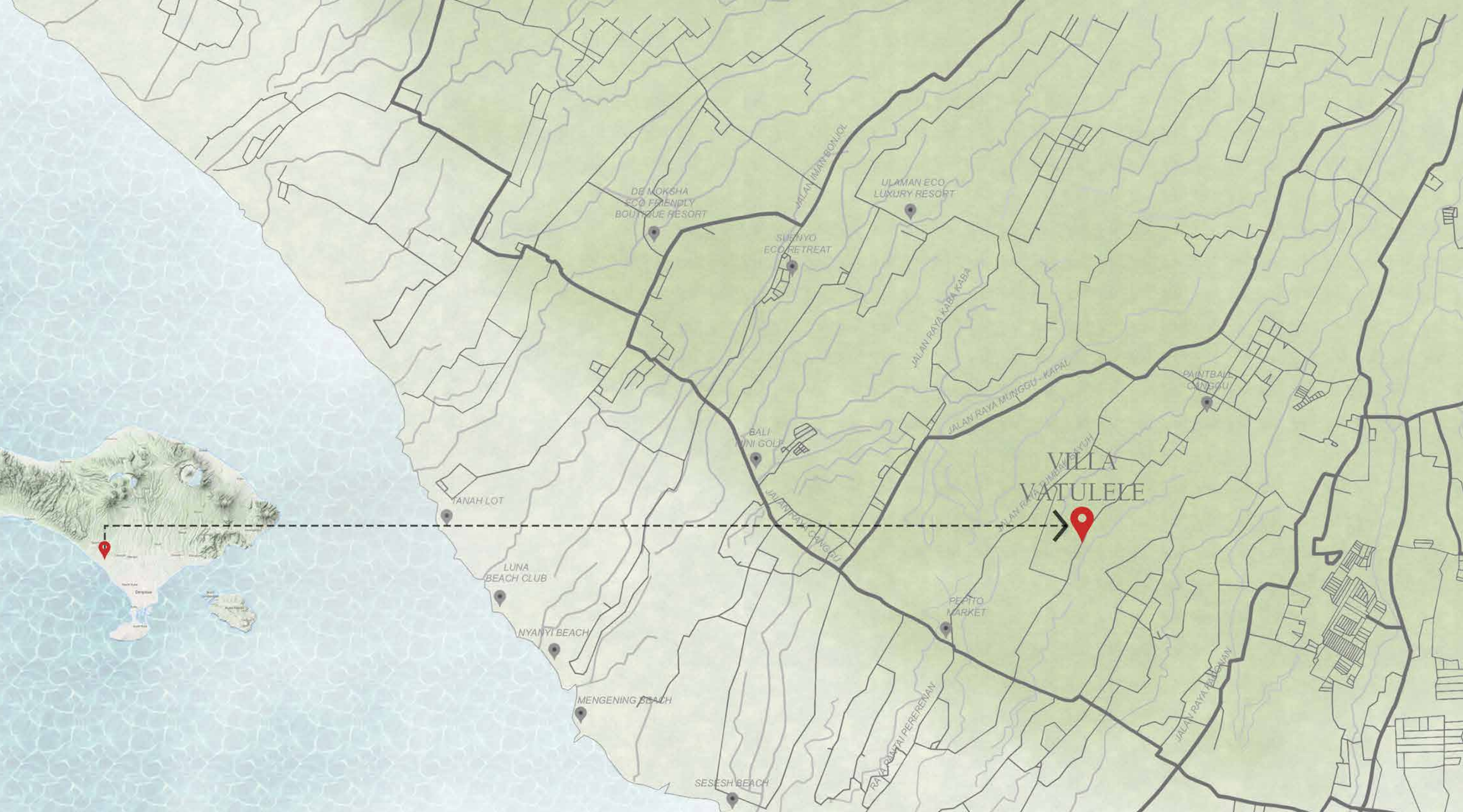
## CONTENT

CREDITS.....	06
CONTENT.....	07
WELCOME TO VILLA VATULELE.....	09
LOCATION.....	13
SITEPLAN.....	17
THE VILLA.....	21
LANDSCAPE.....	87
SUKYF ARCHITECTS.....	97

WELCOME TO  
VILLA VATULELE



## LOCATION



# SITEPLAN



scan for videos



SITEPLAN | SITE

# THE VILLA



VIEW | GENERAL PERSPECTIVE

**Villa Vatulele**  
2000 sqm

**Sukyf Architects**  
Felipe Gonzalez

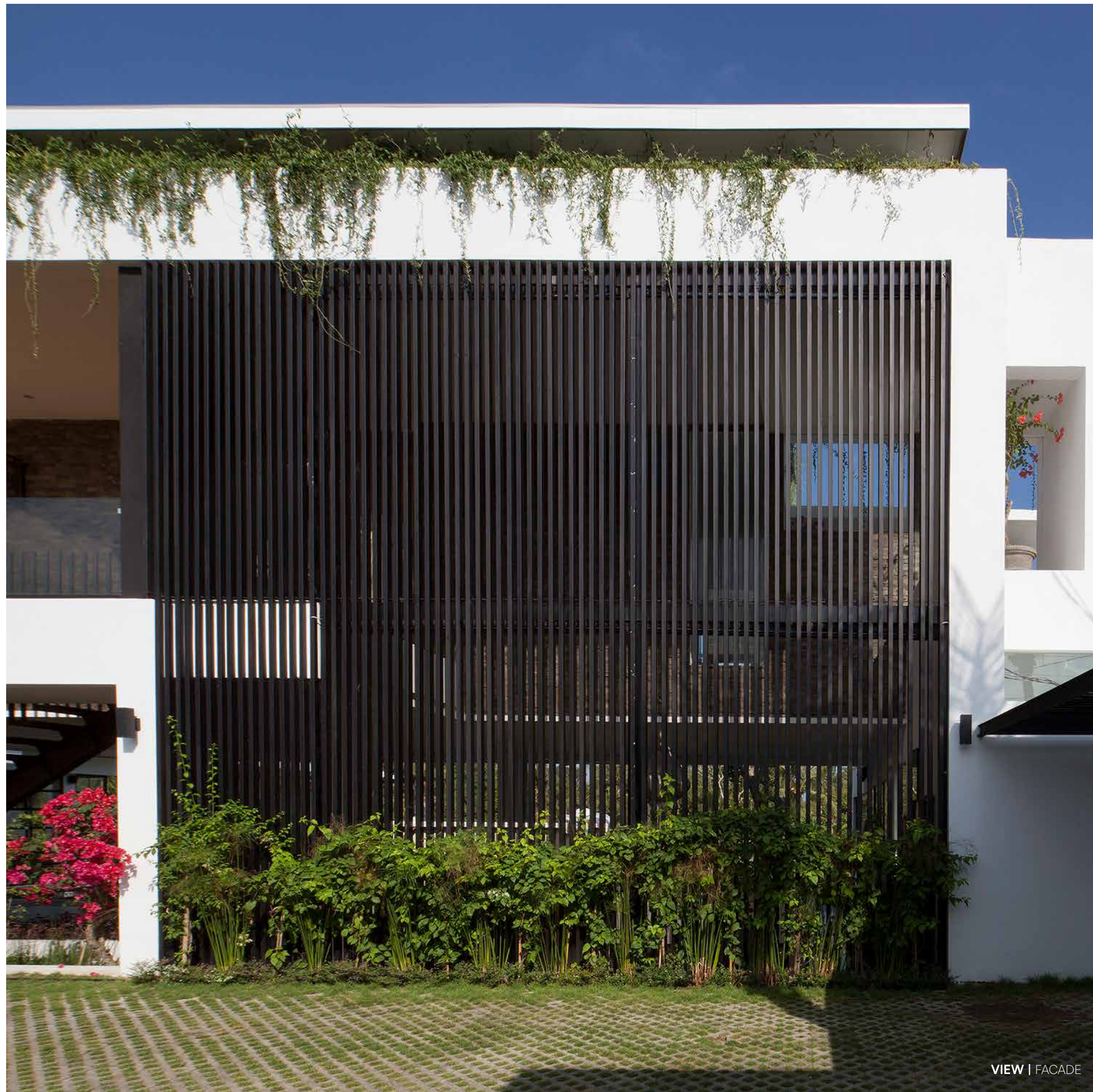
Tiyng Tultul

The raw power and the incredible and emotive drama embodied in 3.270 m2 site on the south coast of Bali, Indonesia provides an amazing design challenge to visualise the potential of the plot. The site itself is a long and relatively narrow piece of land with a huge down slope of 18m down from the road access to the river that crosses the property splitting it in two different worlds. Breathtaking landscapes of paddy fields in front of bottom part of the property complete the variables of this magical equation, one of the most beautiful views of Tiyng Tultul.

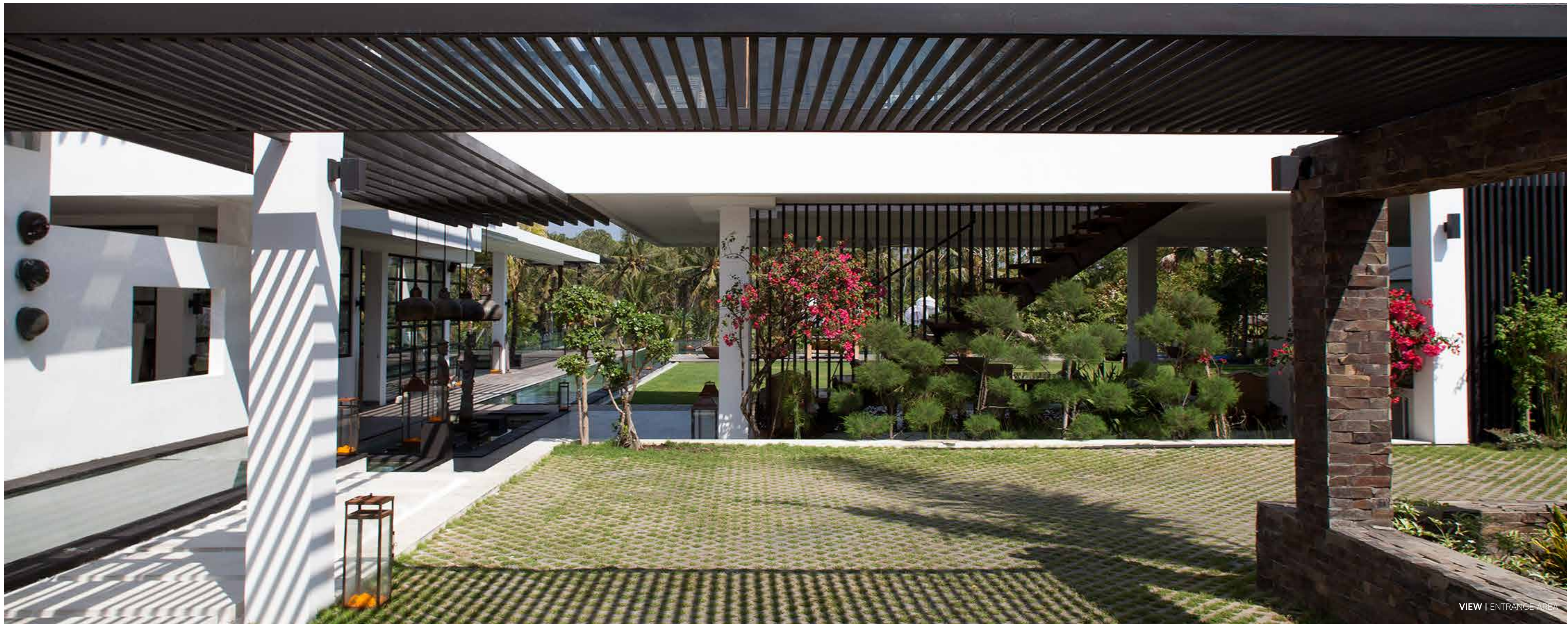




VIEW | ENTRANCE AREA

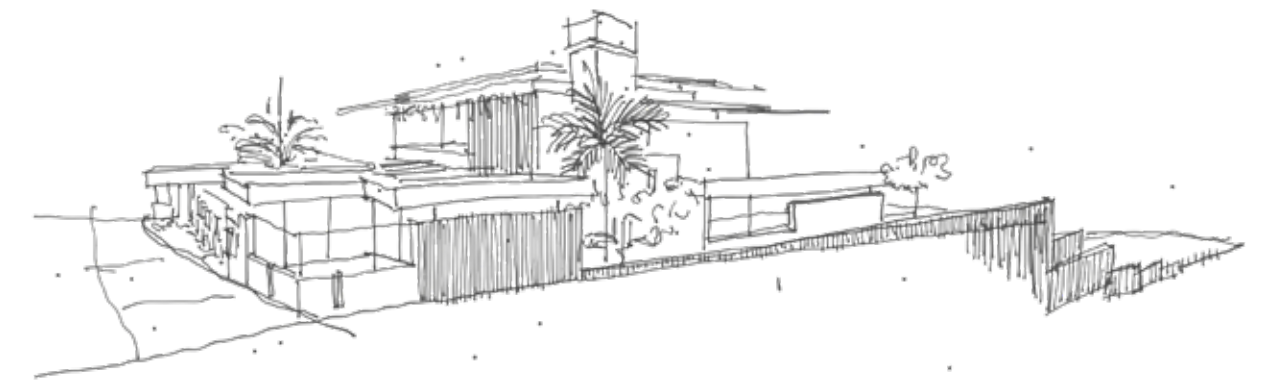


VIEW | FACADE



VIEW | ENTRANCE AREA

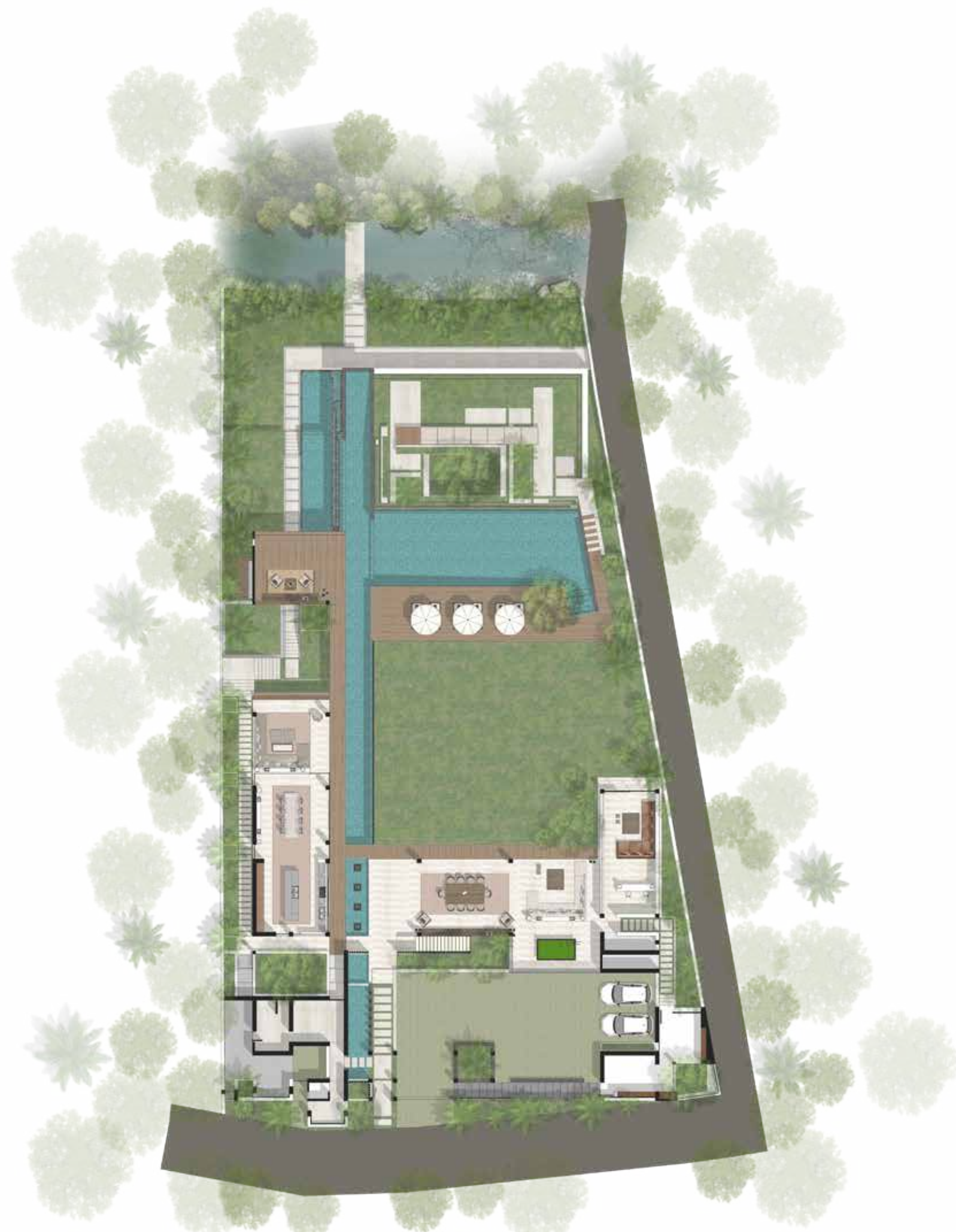
**ENTRANCE** | This thoughtfully designed entryway invites guests into a serene and welcoming environment, creating a seamless transition from the outside world to the tranquil within. Upon entering, guests are greeted by an open-air foyer that enhances the sense of space and light. High ceilings and large, strategically placed windows invite fresh air and sunlight, blurring the boundaries between indoor and outdoor living. Antique artwork and sculptures are incorporated into the entrance design, reflecting the cultural heritage of Bali. These pieces add character and a personal touch, making the entryway unique and inviting. The design ensures a smooth transition into the main living areas, with open sight lines that draw the eye toward the expansive views of the garden and pool beyond, inviting exploration and relaxation. The entrance is framed by carefully curated landscaping, featuring native plants and trees that provide natural privacy and enhance the villa's integration with its environment.

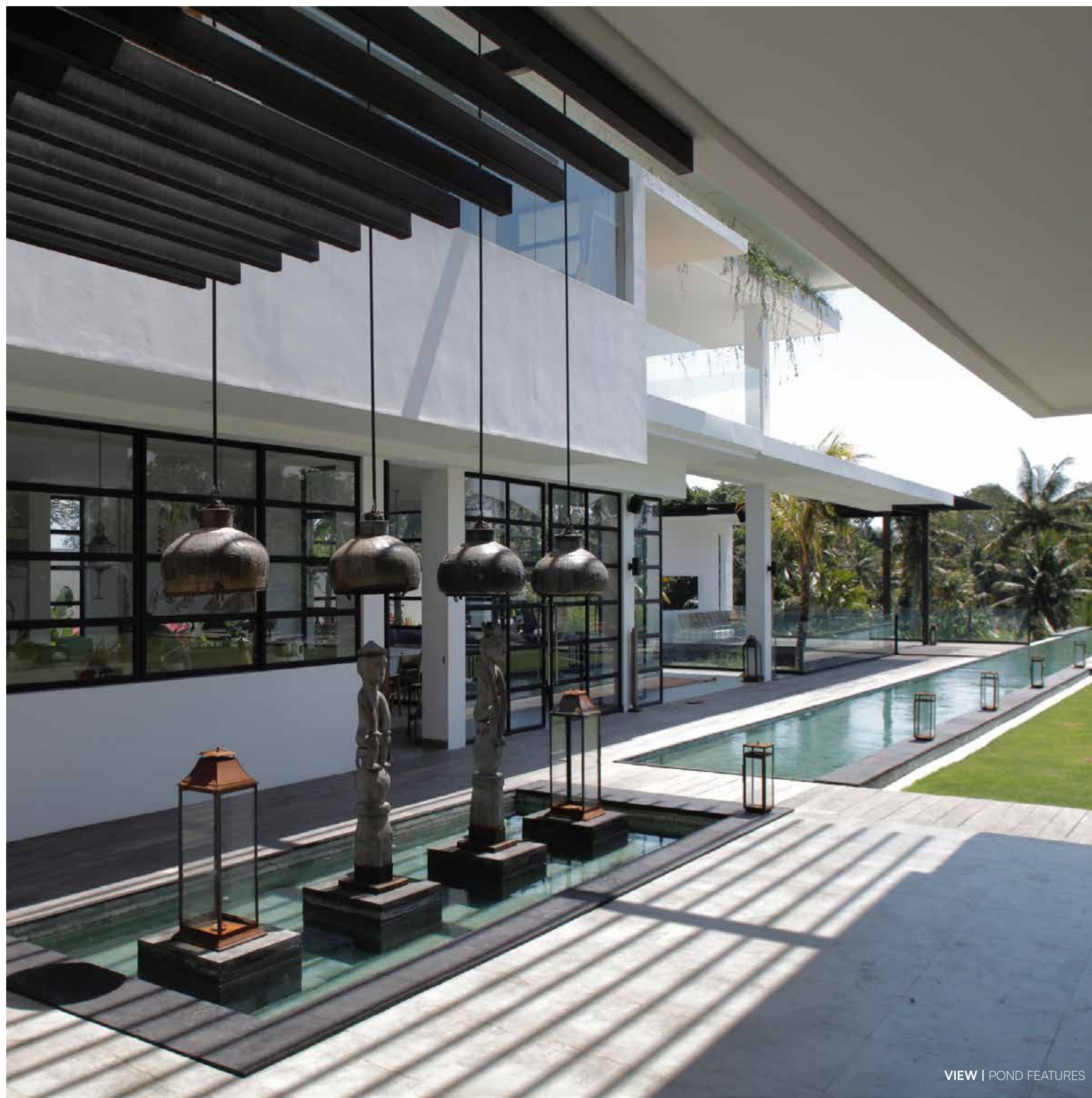
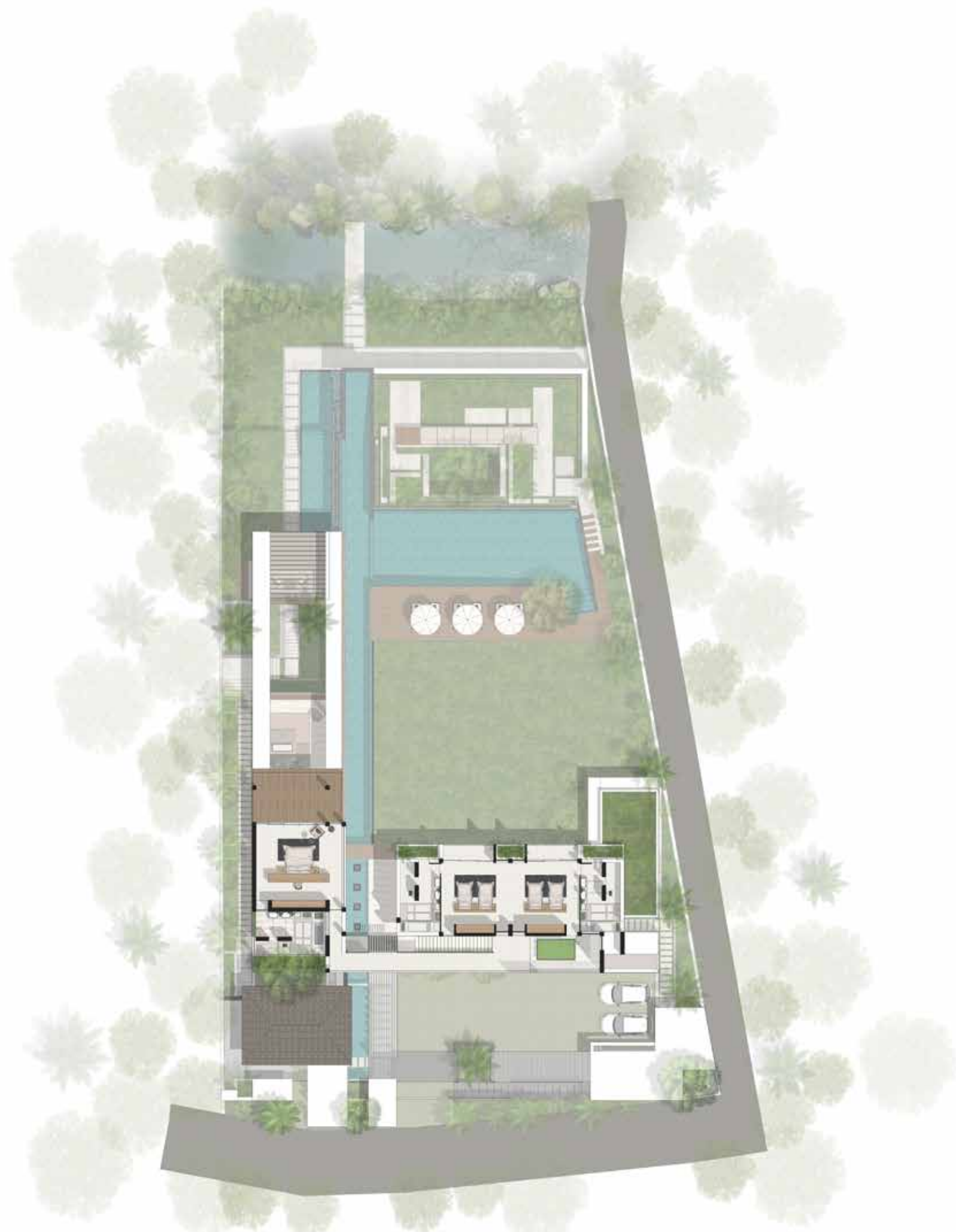




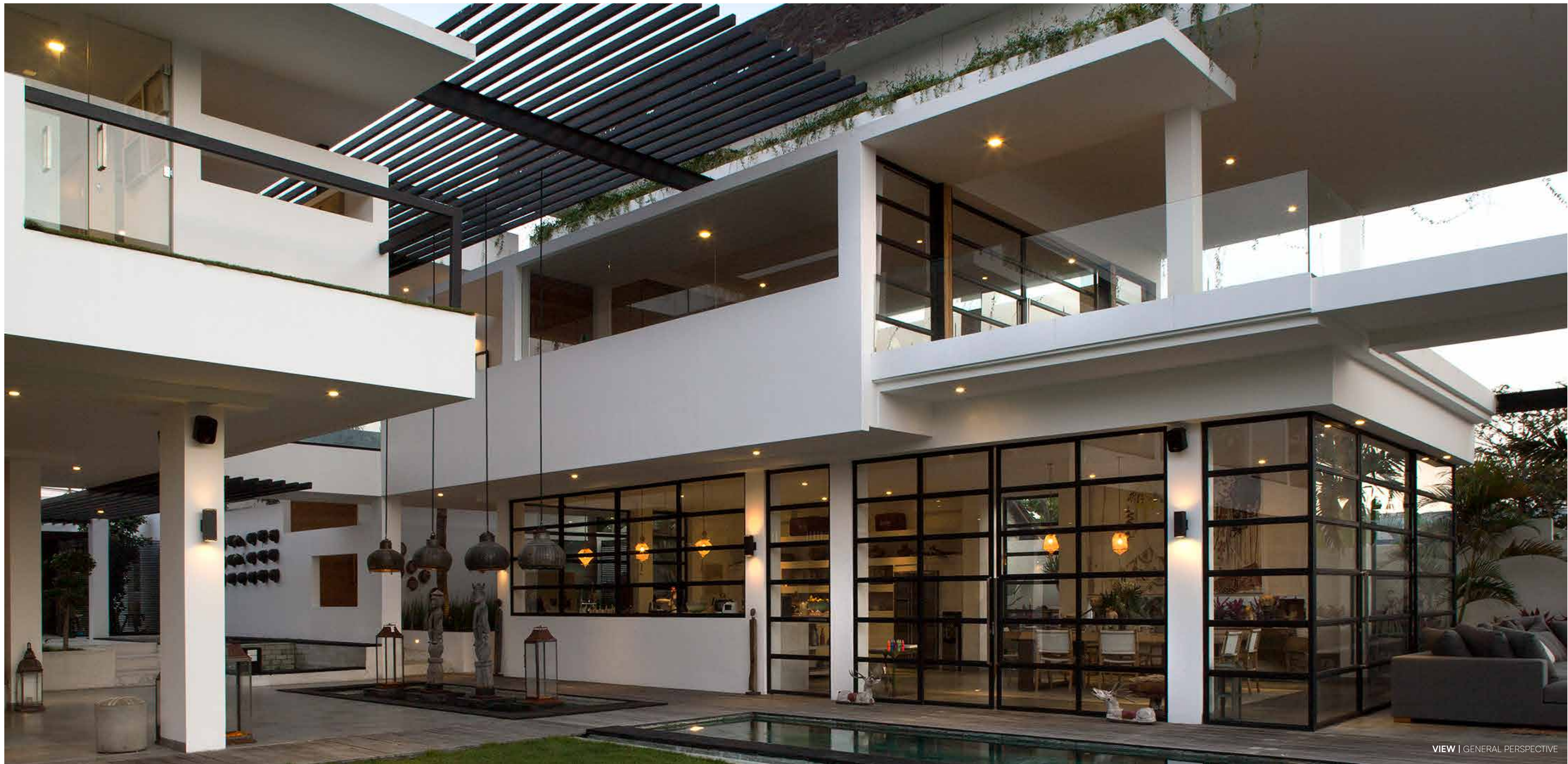
VIEW | ENTRANCE PATHWAY



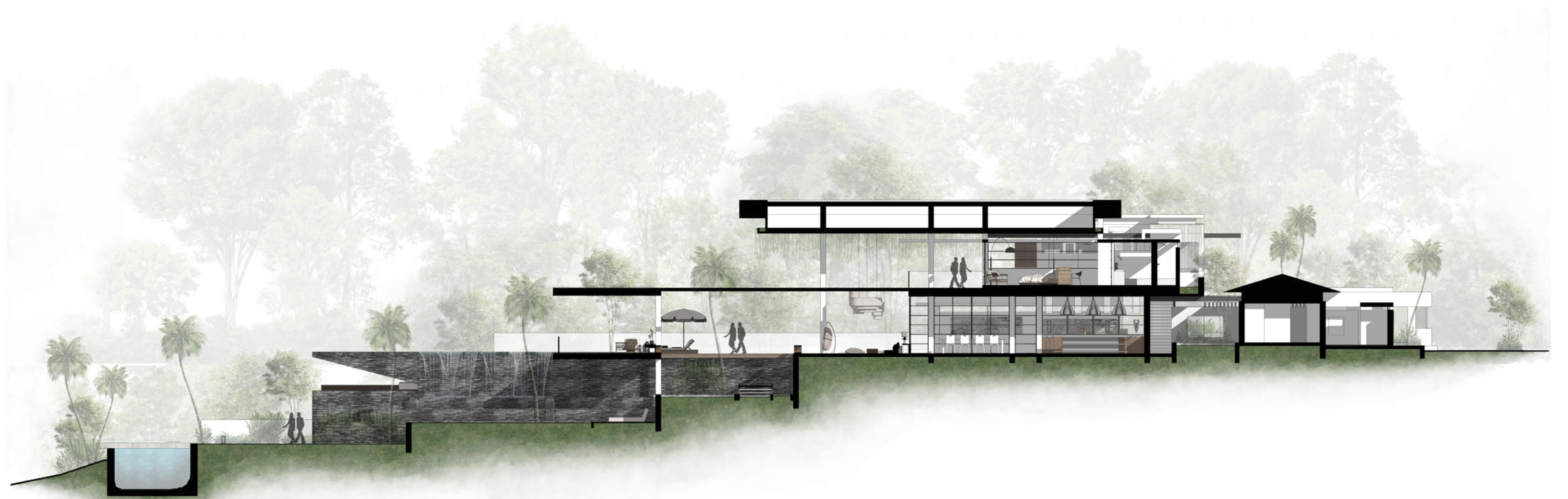


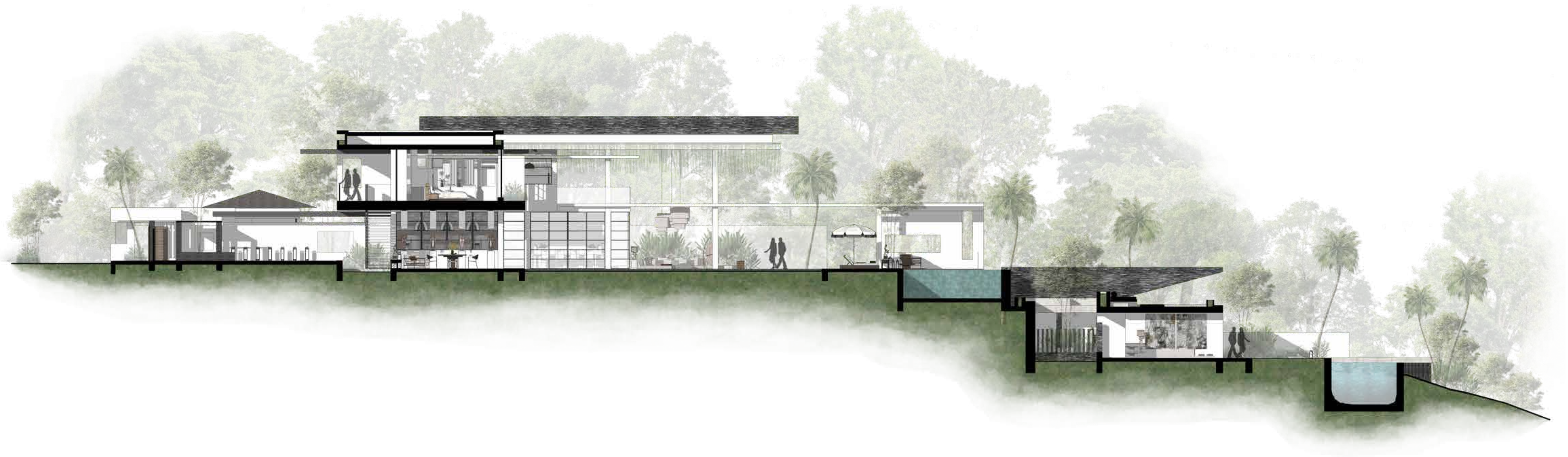


VIEW | POND FEATURES

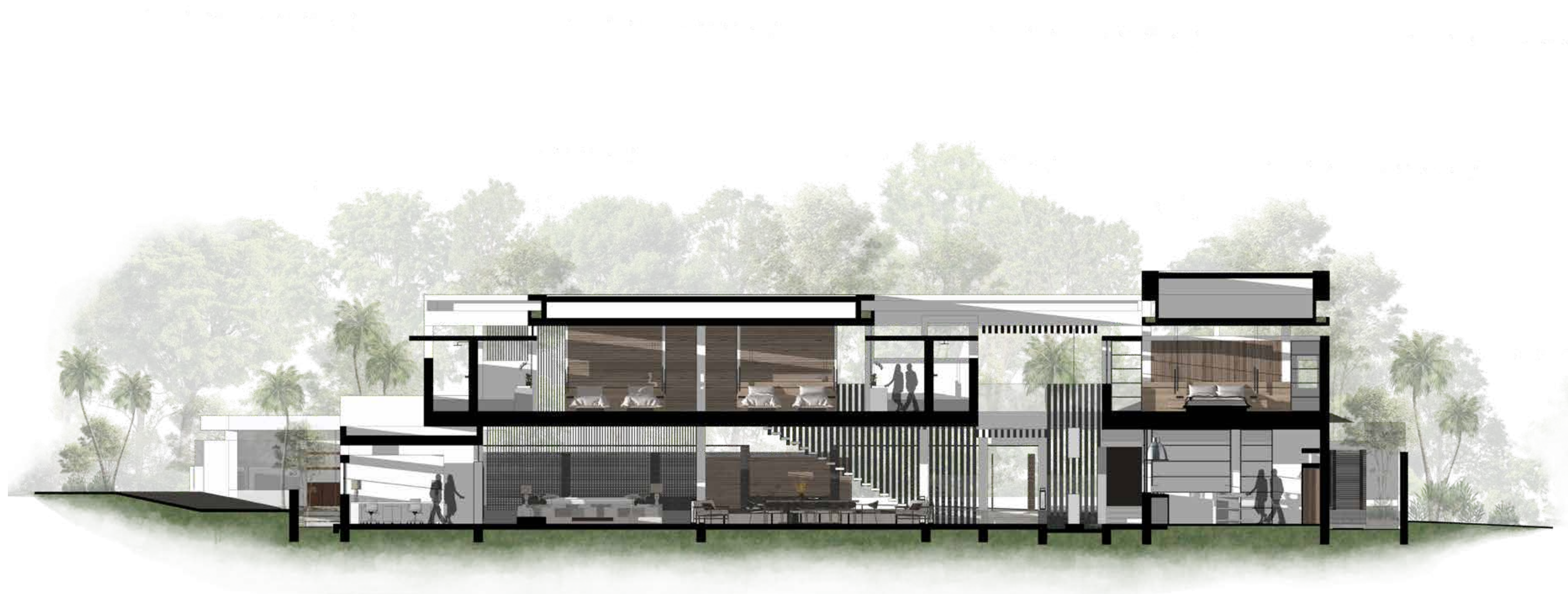


VIEW | GENERAL PERSPECTIVE





0 20 40 100







VIEW | MAIN GARDEN AREA

**MAIN GARDEN |** The garden is designed to extend the living space of the villa, with areas for outdoor dining, lounging, and entertaining. Comfortable seating and shaded spots encourage residents and guests to enjoy the beauty of nature. This features a rich variety of tropical plants, including palm trees, hibiscus, bougainvillea, and frangipani. The diversity adds color and texture, creating a visually stunning environment that changes with the seasons. A tranquil water feature, such as small fountain pond, adds a soothing auditory element and attracts wildlife. This element enhances the garden's tranquility and serves as a focal point within the landscape. The space encourage residents and guests to enjoy the beauty of nature.



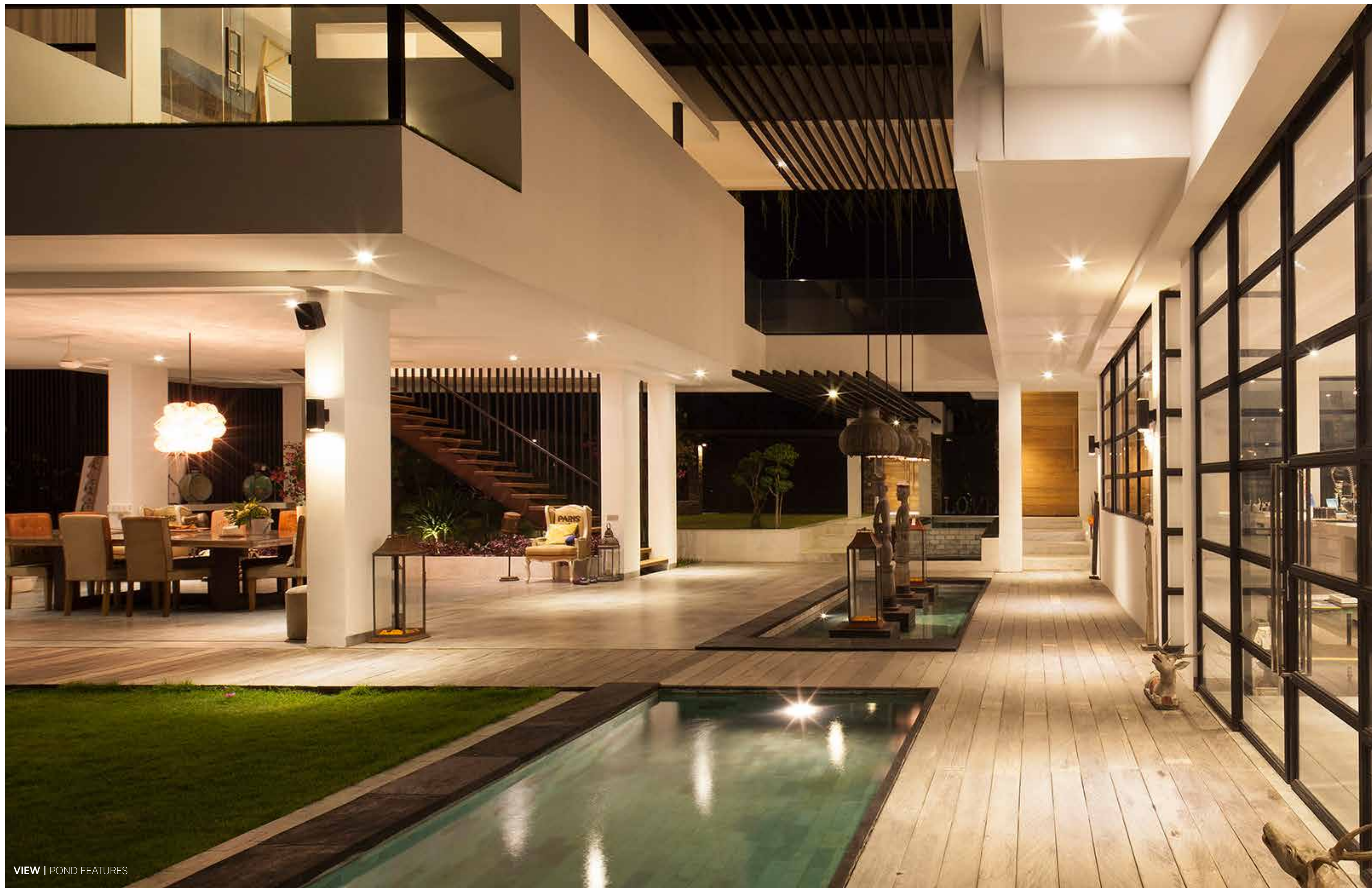
VIEW | SWIMMING POOL



**POOL |** The stunning oasis designed for relaxation and enjoyment, perfectly complementing the villa's lush surroundings. The pool features a generous design with a freeform shape, blending naturally with the landscape. Its crystal-clear waters invite swimming and lounging, while the surrounding deck provides ample space for sunbathing and relaxation. A beautifully designed fountain is strategically positioned alongside the pool, adding a soothing auditory element to the environment. The gentle sound of flowing water enhances the vibrant atmosphere, making it a perfect spot for unwinding. Direct access from the villa's living area to the pool creates an effortless flow, encouraging a lifestyle centered around outdoor living and entertaining. This area serves as a perfect sanctuary for both leisure and social gatherings, embodying the tranquility of tropical living.



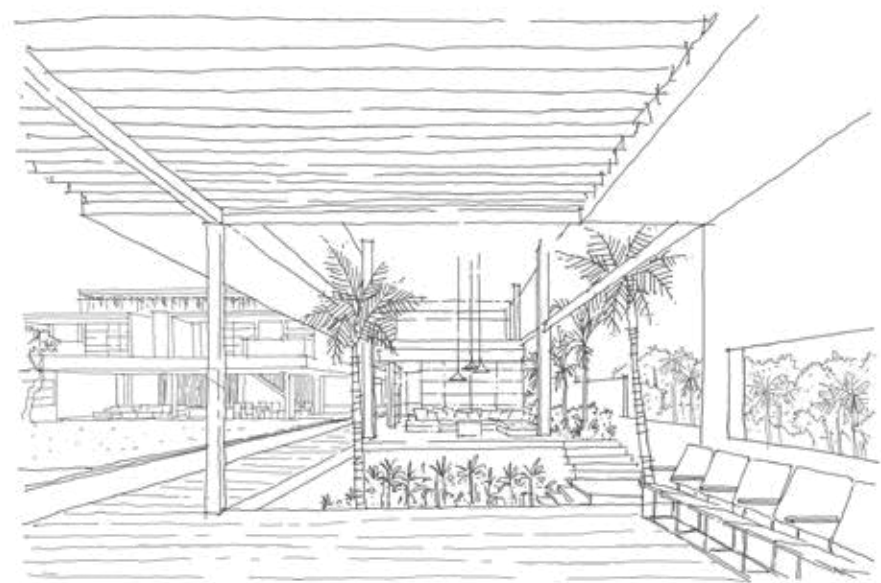
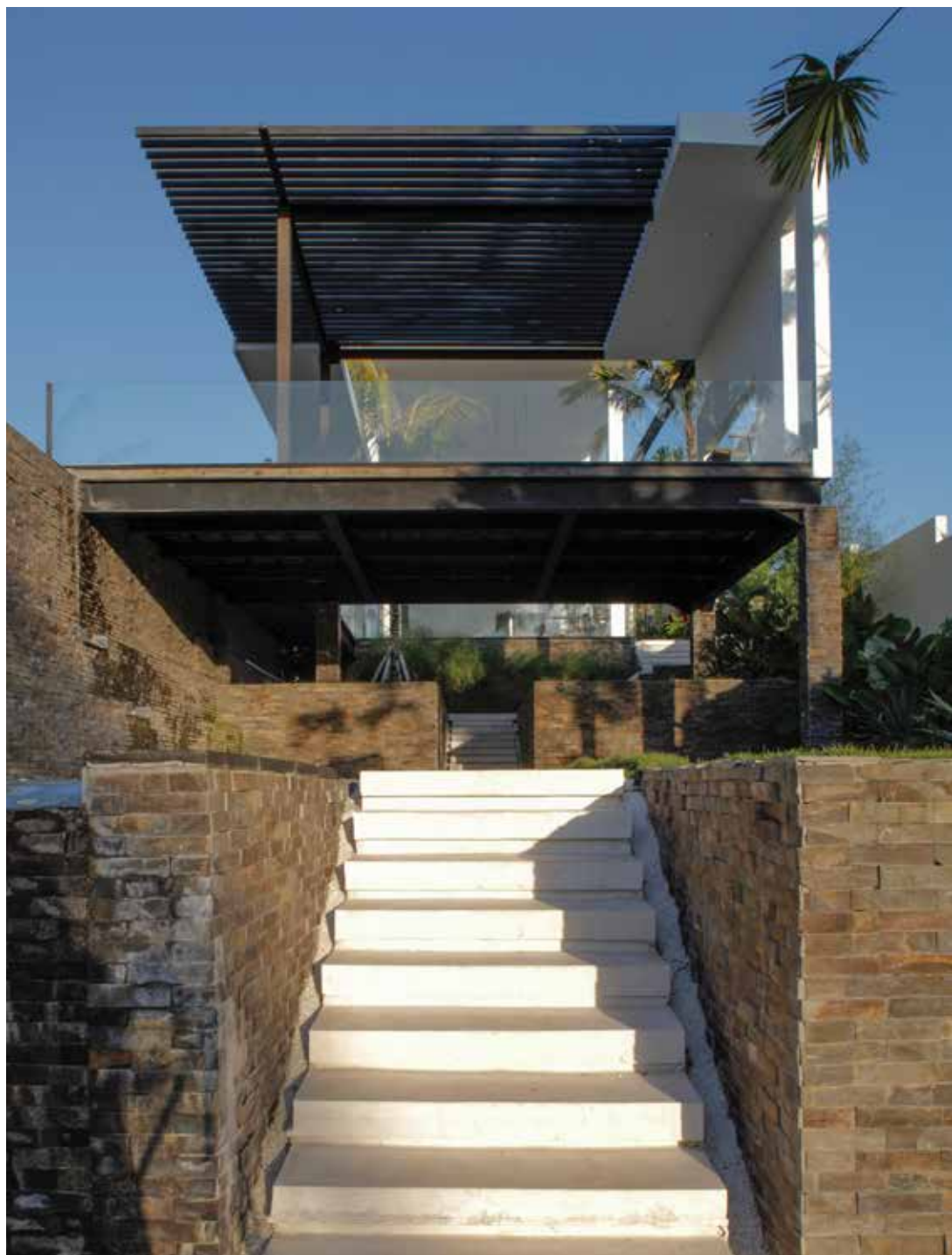
VIEW | GENERAL PERSPECTIVE



VIEW | POND FEATURES



**POND** | The pond features a multi-tiered structure with varying depths and levels, creating a visually dynamic landscape. Each layer is interconnected by gentle waterfalls, allowing water to flow gracefully from one level to the next. The edges of the pond are lined with locally sourced natural stone, giving it an organic feel that blends harmoniously with the tropical environment. The stonework adds texture and complements the lush greenery surrounding the pond. Subtle underwater and surrounding lighting illuminate the pond at night, creating a magical ambiance. Soft lighting highlights the water features and surrounding plants, transforming the space into a tranquil evening retreat. The pond is strategically located to provide views from various points within the villa, ensuring that it becomes a focal point of the landscape. The gentle sounds of water flowing create a soothing atmosphere that promotes relaxation and connection to nature.



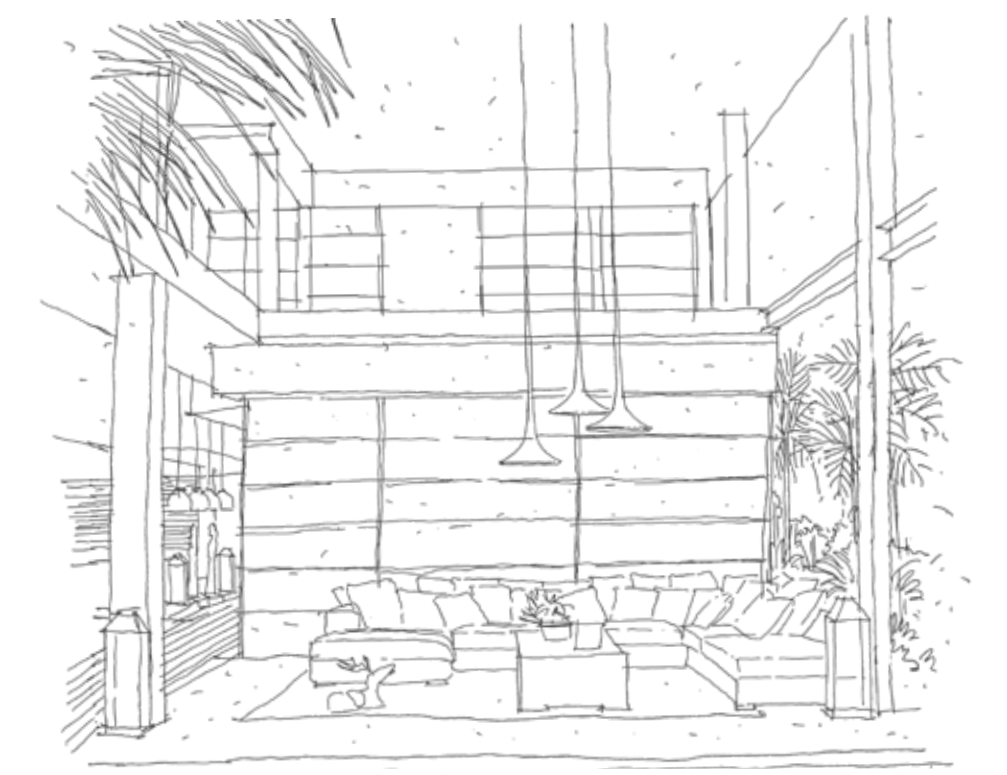
VIEW | POOL TERRACE







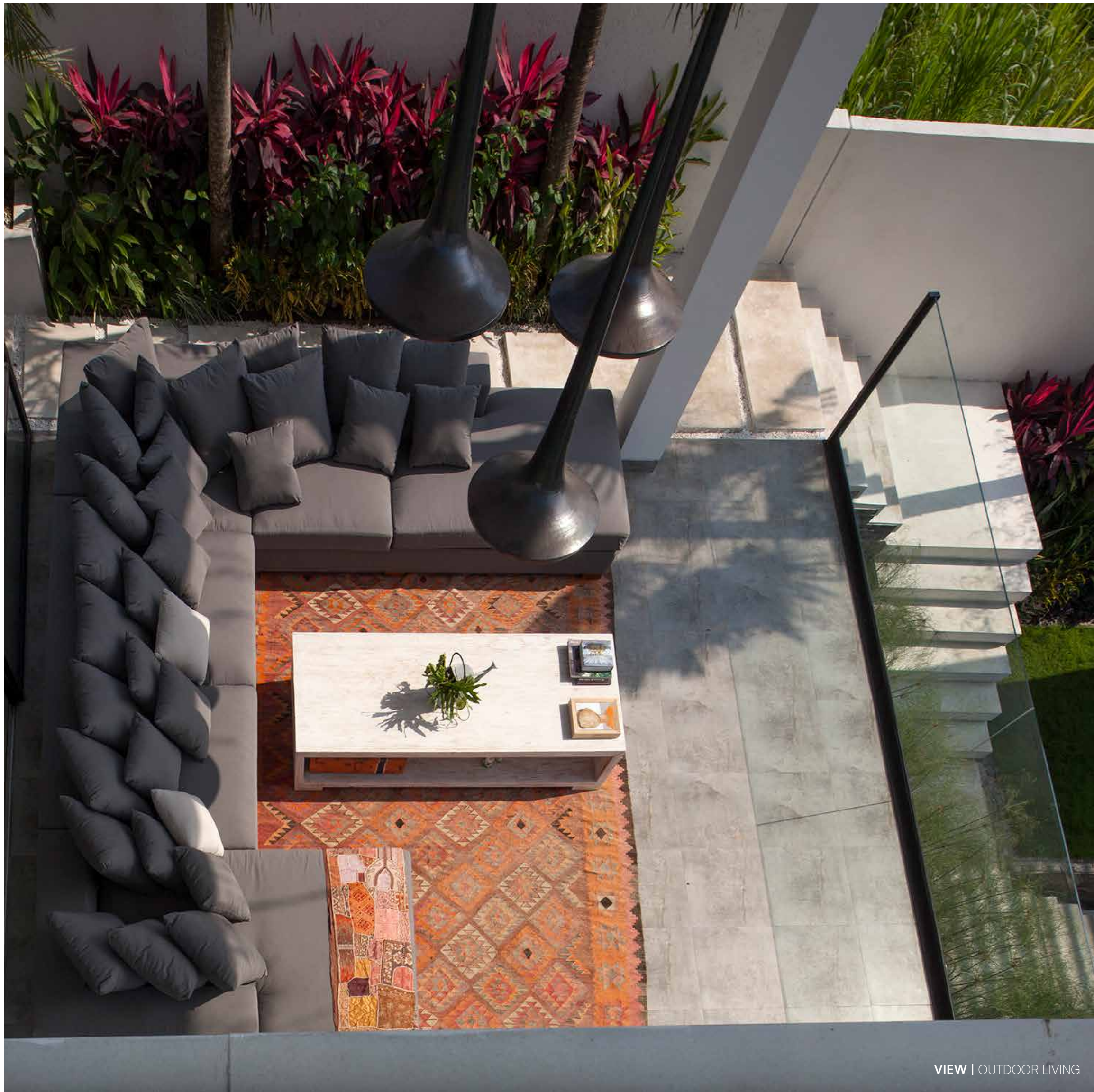
VIEW | LIVING AREA



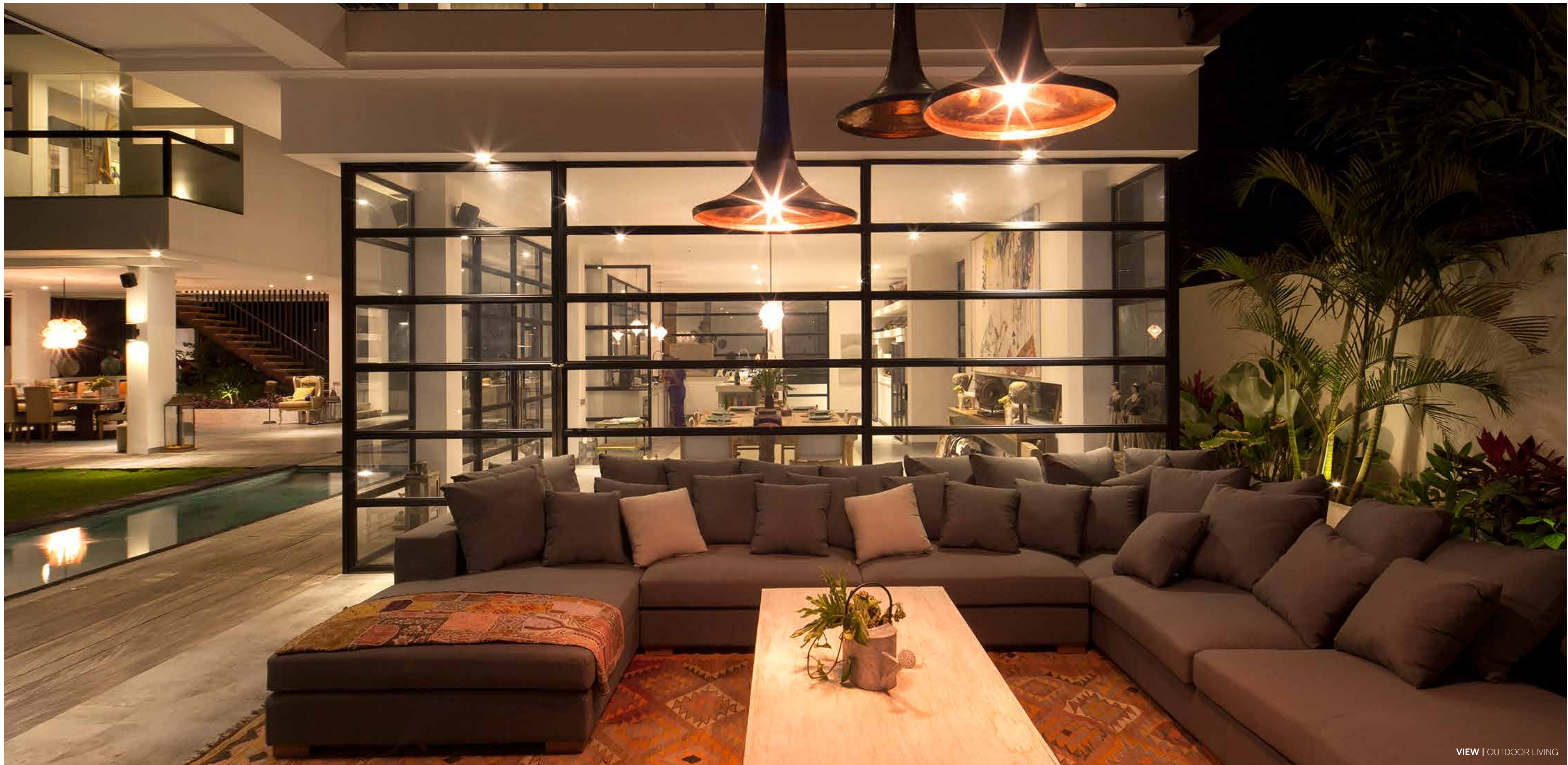
**LIVING AREA |** The space offers a seamless fusion of contemporary style and natural beauty, with expansive views of the lush main garden and the grand, glistening pool that stretches out before it. Designed to emphasize openness and tranquility, the space is flooded with natural light through wide floor-to-ceiling windows that invite the outdoors in, creating a harmonious flow between the interior and the stunning tropical surroundings. The living room features minimalist, clean lines, with a large, low-profile sectional sofa in neutral tones of beige, complemented by sleek, sculptural poufs seating. The furniture is arranged to maximize the view, with the seating area focused toward the garden and pool. A simple, yet elegant coffee table made from natural materials of wood anchors the space, and a handwoven rug with subtle textures adds warmth and depth to the modern aesthetic.



VIEW | OUTDOOR LIVING



VIEW | OUTDOOR LIVING







**KITCHEN** | This modern kitchen with an adjoining dining area seamlessly blends sleek design with functionality, offering a light-filled space that overlooks the villa's stunning main garden. The open-plan layout creates a sense of spaciousness, where clean lines and simple forms define the aesthetic. Soft natural light pours through large windows that frame the lush greenery outside, allowing the beauty of the garden to become an integral part of the indoor experience. The countertops, made from smooth marble or polished concrete, provide an elegant yet understated backdrop to the space, while integrated lighting beneath the cabinets offers a soft, ambient glow. The space serves as the perfect backdrop for both intimate gatherings and quiet moments of reflection, blending contemporary design with the tranquil beauty of Bali's natural landscape.





VIEW | BEDROOM



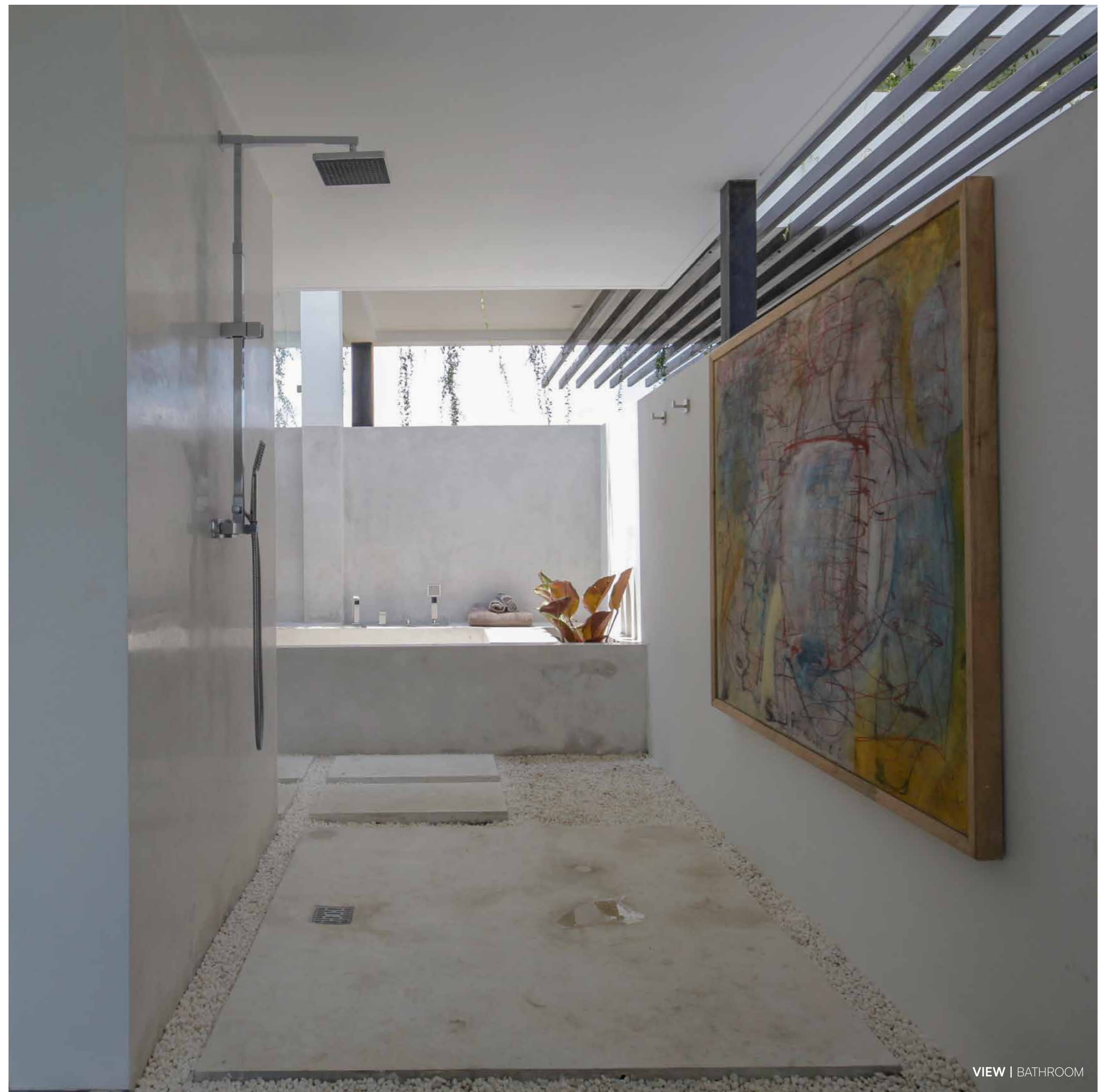
**BEDROOM |** In the embrace of Vatulele, this stylish bedroom embodies the perfect fusion of tropical luxury and modern elegance. The room boasts expansive windows that frame panoramic views of the verdant jungle, allowing natural light to flood the space while offering a sense of openness and tranquility. The design blends rich, natural materials with sleek, contemporary touches, from polished wood floors to antique accents and plush cushions. A private terrace, accessible through large glass doors, invites moments of quiet reflection, surrounded by lush greenery and the sounds of nature and a gentle, refreshing breeze. This bedroom is a serene sanctuary, a perfect blend of nature, luxury, and timeless design.

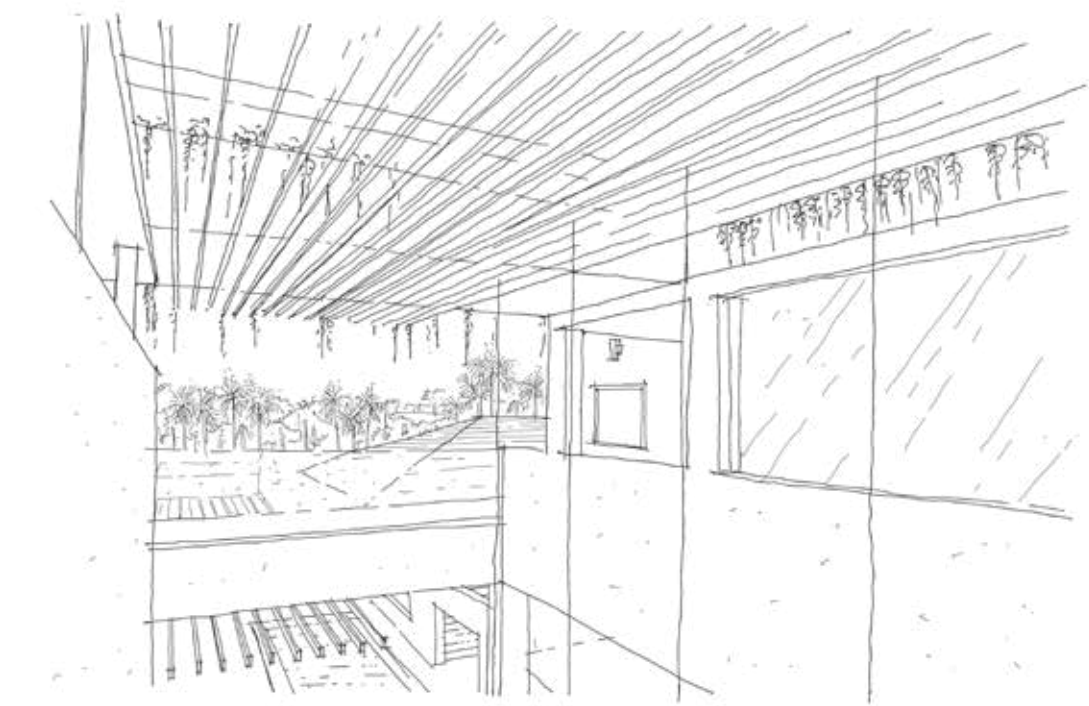


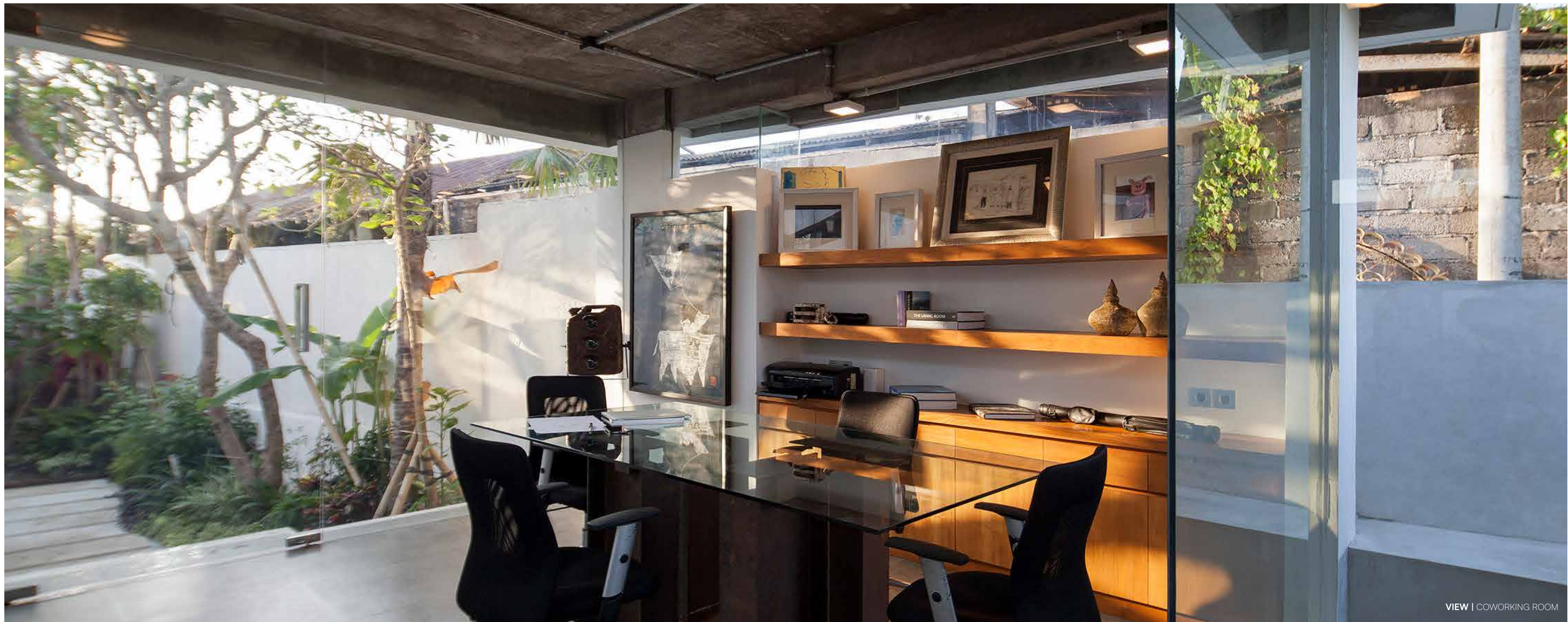
VIEW | BATHROOM



**BATHROOM** | The bathroom features an open layout that flows naturally from the bedroom, creating an expansive and airy feel. High ceilings and large windows invite natural light, enhancing the sense of openness. The walk-in rain shower, elegantly tiled with natural stone, features both a rainfall showerhead and handheld options. Glass partitions create a seamless connection to the rest of the space while maintaining a sense of privacy. A combination of ambient, task, and accent lighting creates a warm and inviting atmosphere. Recessed lights and decorative fixtures add elegance while ensuring the space is well-lit. With its spacious layout, elegant fixtures, and harmonious connection to nature, it offers a peaceful sanctuary for relaxation and rejuvenation, perfectly complementing the villa's overall design ethos.

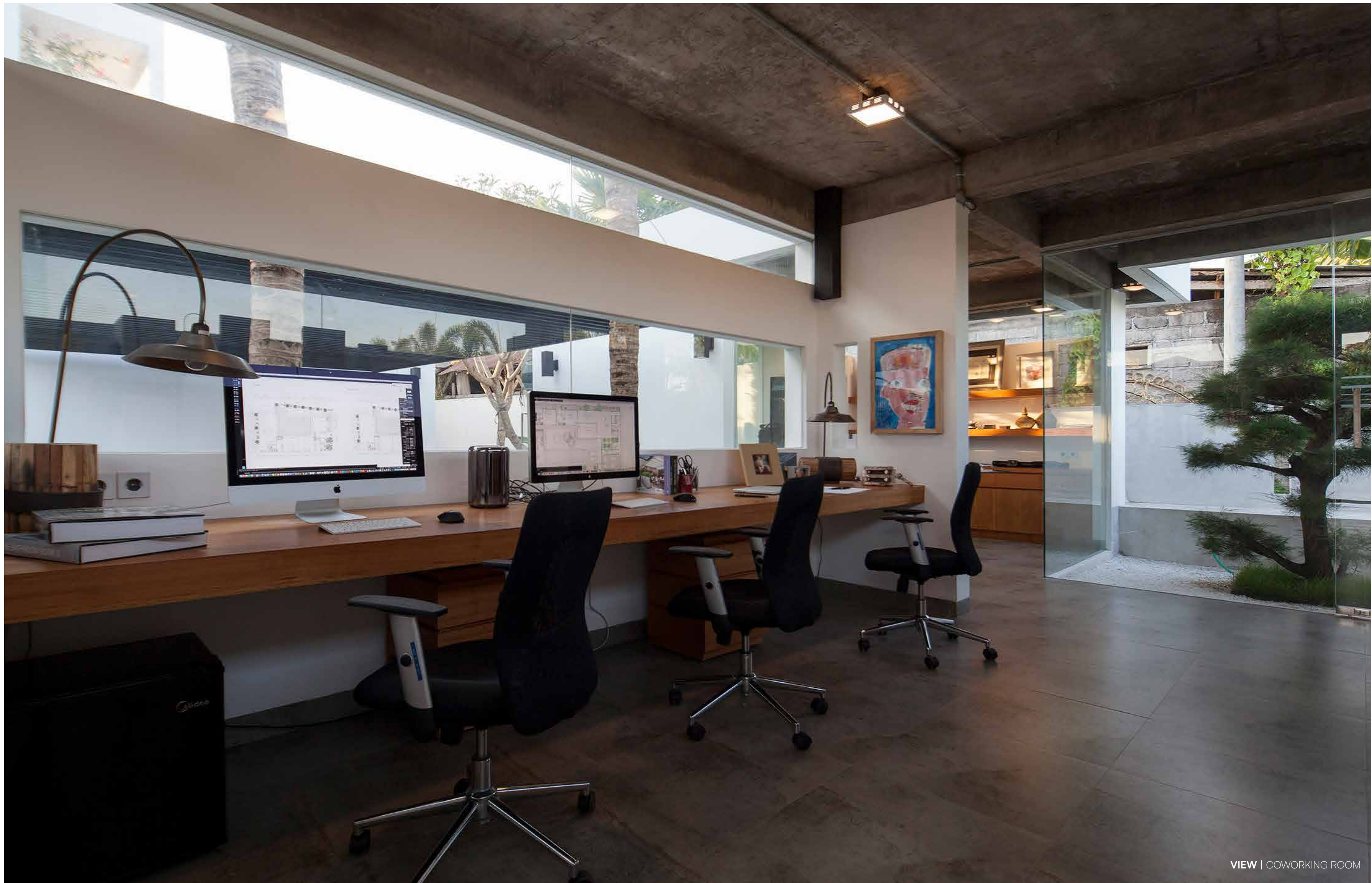






VIEW | COWORKING ROOM

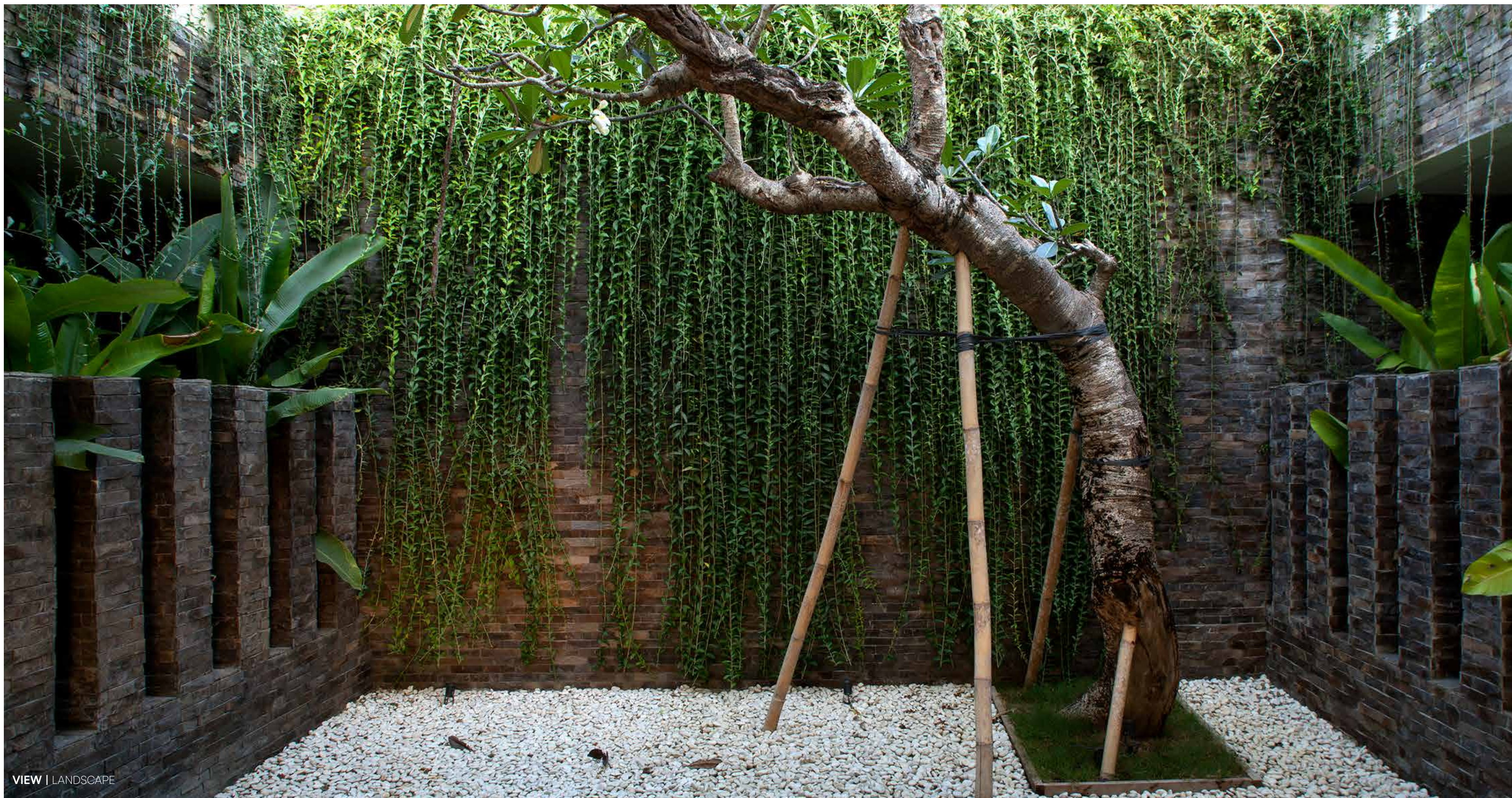
**COWORKING ROOM** | The coworking room is a unique and inspiring space that beautifully merges functionality with a rich sense of history and style. This room is designed to foster creativity and productivity while offering an inviting atmosphere enhanced by antique furniture and decor. The walls are adorned with a mix of antique art pieces, vintage maps, and local crafts that reflect the cultural heritage of Bali. Thoughtful decor items, such as decorative vases and bookshelves filled with designer books, further enrich the ambiance. While embracing a vintage aesthetic, the coworking room is equipped with modern furnishings, including comfortable seating and excellent technology. This ensures that the space is functional for contemporary work needs without compromising its antique charm.





VIEW | WEST SIDE VIEW

# LANDSCAPE



VIEW | LANDSCAPE



**LANDSCAPE** | The landscape design of the villa embraces the essence of tropical Balinese aesthetics, creating a harmonious outdoor environment that celebrates nature's beauty. Lush greenery dominates the scene, featuring an array of native plants such as palm trees, frangipani, and vibrant hibiscus, which thrive in the warm climate. Pathways meander through the garden, lined with natural stone and flanked by colorful flowering shrubs, inviting exploration and connection with the surroundings. Water features, like serene ponds and gentle waterfalls, enhance the tranquility, while antique sculptures and decorative elements provide cultural depth and visual interest. This thoughtfully crafted landscape not only promotes relaxation





VIEW | FRONT LANDSCAPE



VIEW | POOL LANDSCAPE



VIEW | SUNSET VIEW



# FELIPE GONZALEZ JIMENEZ DE LA ESPADA

## ARCHITECT & DESIGNER

Felipe González Jiménez de la Espada leads an international team of professionals, emphasizing the importance of uniqueness in every moment to create distinctive experiences for clients, regardless of project scale. We translate diverse client wishes into functional and enduringly beautiful creations. With a blend of modern and traditional influences, our focus on quality ensures that luxury and simplicity exude elegance.

Since 1995, Felipe González Jiménez de la Espada has acquired an impressive portfolio of private, corporate and commercial clients in 15 countries around the world. Its headquarters are based in Madrid, Spain.

## THE PRACTICE

“The art of listening”. Founded in 1995, Sukyf is an internationally renowned architecture design studio. Recognized for its multidisciplinary approach and the talent of balancing functionality, aesthetics into each one their creations and designs. Sukyf Studio creates bespoke modern minimalist architecture, interiors, furnitures and product designs. The concept of blending exterior, interior and product design skills with context, culture and environment. We feel, we enjoy and the most important part of an studio firm we listen to our clients, spending time with them letting them open themselves to us in order to squeeze until the last drop of their personality in order to translate that into the character of each individual architecture or element that we design, always searching for the perfect fusion on elements for that one singular design.

Our purpose is to shift and exceed the expectations of every single one of our clients either private or corporate ones. Quality as a philosophy, passion on every single line, natural materials, simplicity, elegance and the maximum combination on three element, textures or colors on every creation drives you to an exceptional detail result. Innovation, timeless appeal, proportions and comfort as fundamentals on every design.



scan for videos



For further information :  
[www.sukyf.com](http://www.sukyf.com) | [info@sukyf.com](mailto:info@sukyf.com)



est. 2016



# VATULELE

P R I V A T E V I L L A

[www.sukyf.com](http://www.sukyf.com) || [info@sukyf.com](mailto:info@sukyf.com)