

SAPTA BAYUH

P R I V A T E V I L L A



SAPTA BAYUH

PRIVATE VILLA

SUKYF & ARCHITECTS



DESIGN BY

FELIPE GONZALEZ & MERSUKA DOPAZO

ARRANGED BY

JUANA ASA

TEXT BY

NICOLAS GONZALEZ

ILLUSTRATION BY

MIKA MUKHTA

CONTENT

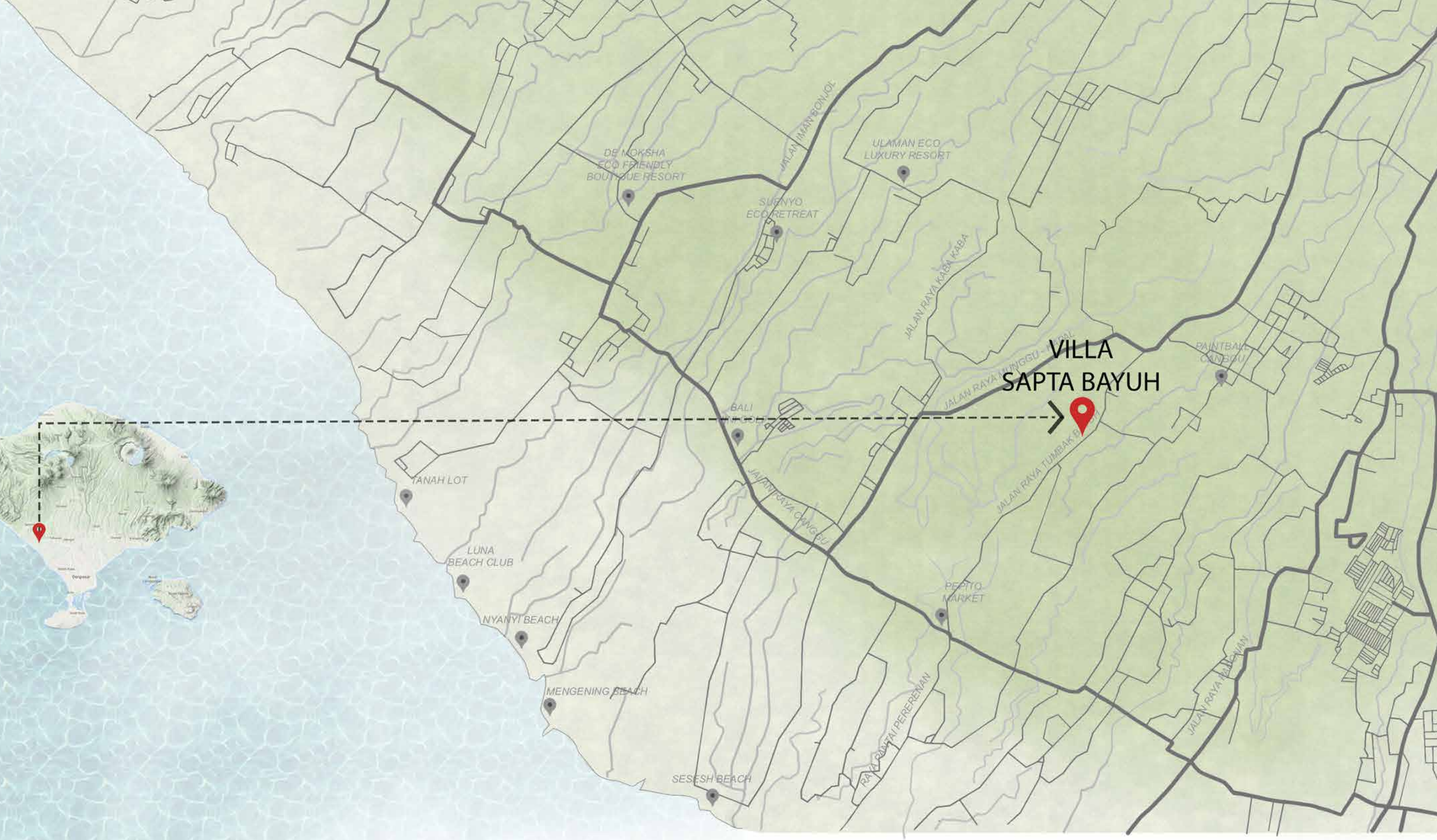
CREDIT.....	06
TABLE OF CONTENT.....	07
WELCOME TO SAPTA BAYUH.....	11
LOCATION.....	15
SITEPLAN.....	19
THE VILLA.....	23
LANDSCAPE.....	93
SUKYF ARCHITECTS.....	103



WELCOME TO
VILLA SAPTA BAYUH



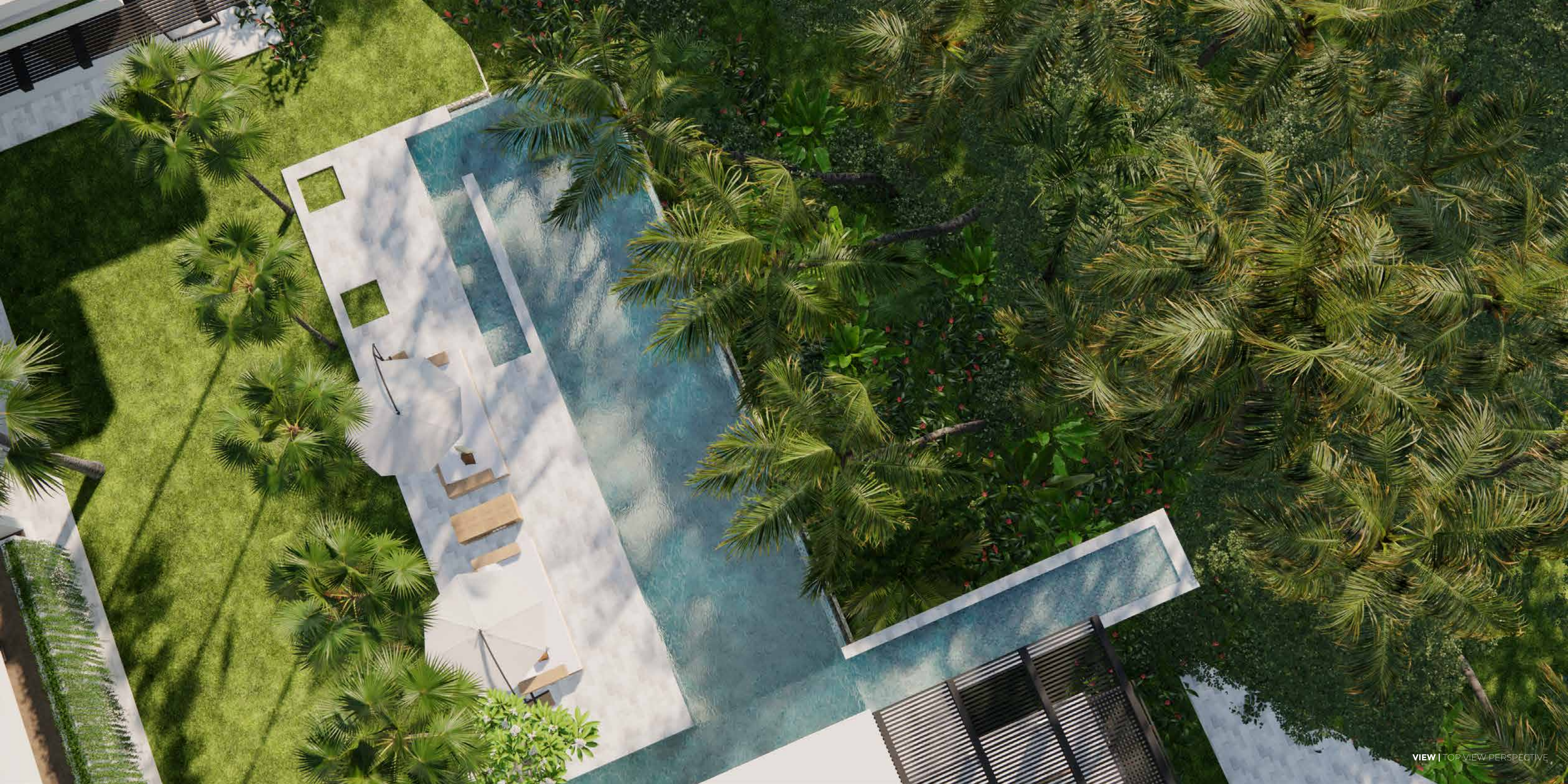
LOCATION



SITEPLAN



THE VILLA







VIEW | PERSPECTIVE VILLA

Villa Sapta Bayuh
1550.00 sqm

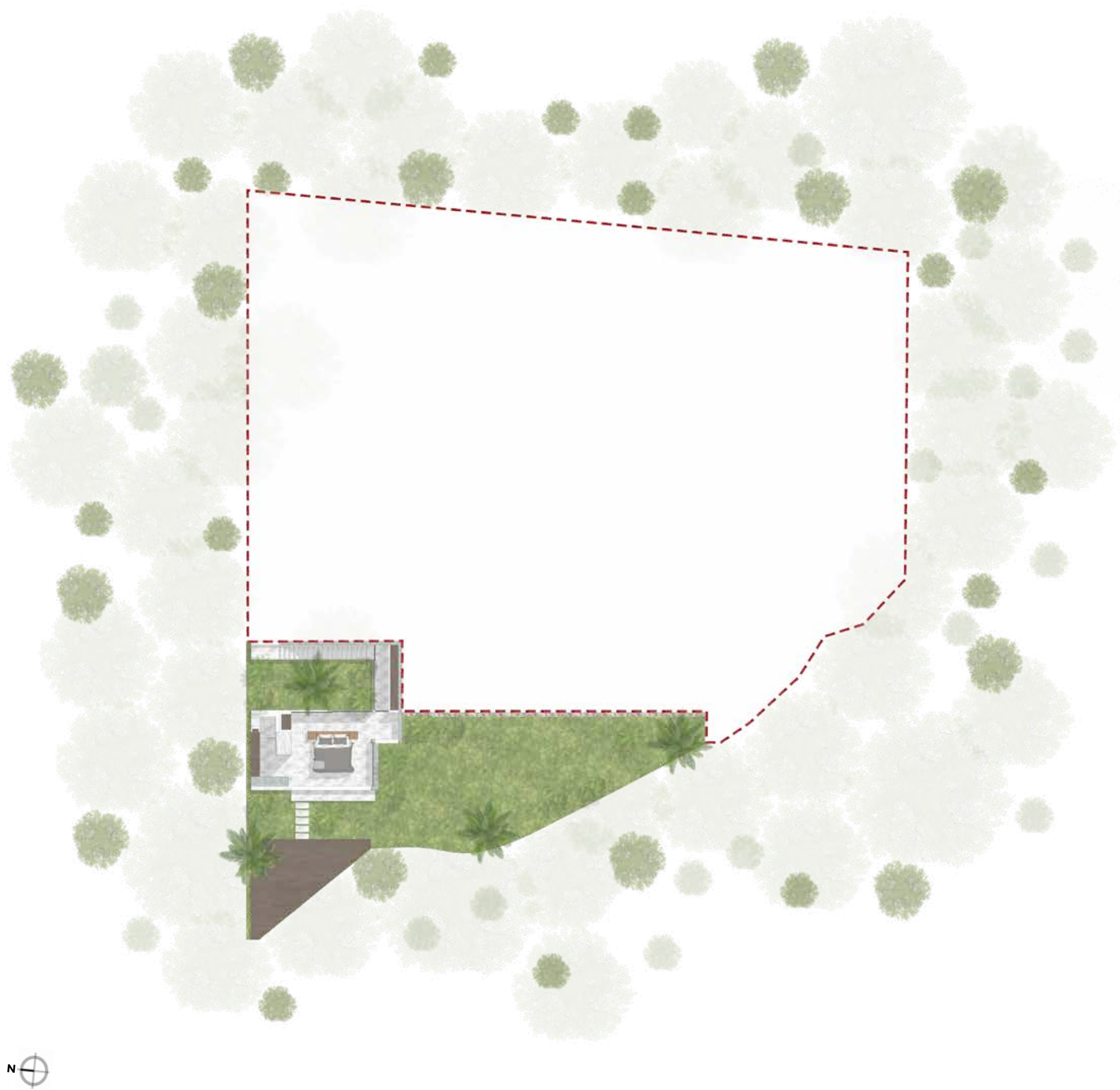
6 Bedroom villa

Sukyf Architects
Felipe Gonzalez

Badung

Located in Tumbak Bayuh's premier expat neighborhood, Sabta Bayuh stands as the signature villa of the Tumbak Bayuh Residences, gracefully occupying a generous 1,550m² plot with 1,125m² of meticulously designed space across three levels. The house's contemporary design harmoniously integrates with lush entrance gardens, and the main pool cascades elegantly toward the river and rice paddies, creating a striking indoor-outdoor connection. Upon entering, visitors are welcomed by natural elements and calming water features that set a tranquil tone. Varied ceiling heights throughout the interior add depth, while Balinese clawing stones introduce an exclusive touch. Expansive glass doors in the dining area enhance the flow of fresh air, seamlessly blending indoor and outdoor spaces. The villa's refined, eclectic interior, masterfully designed by Sukyf Interior Design Studio under Mersuka Dopazo, embodies a perfect balance of elegance and artistic collaboration.















0 20 40 100

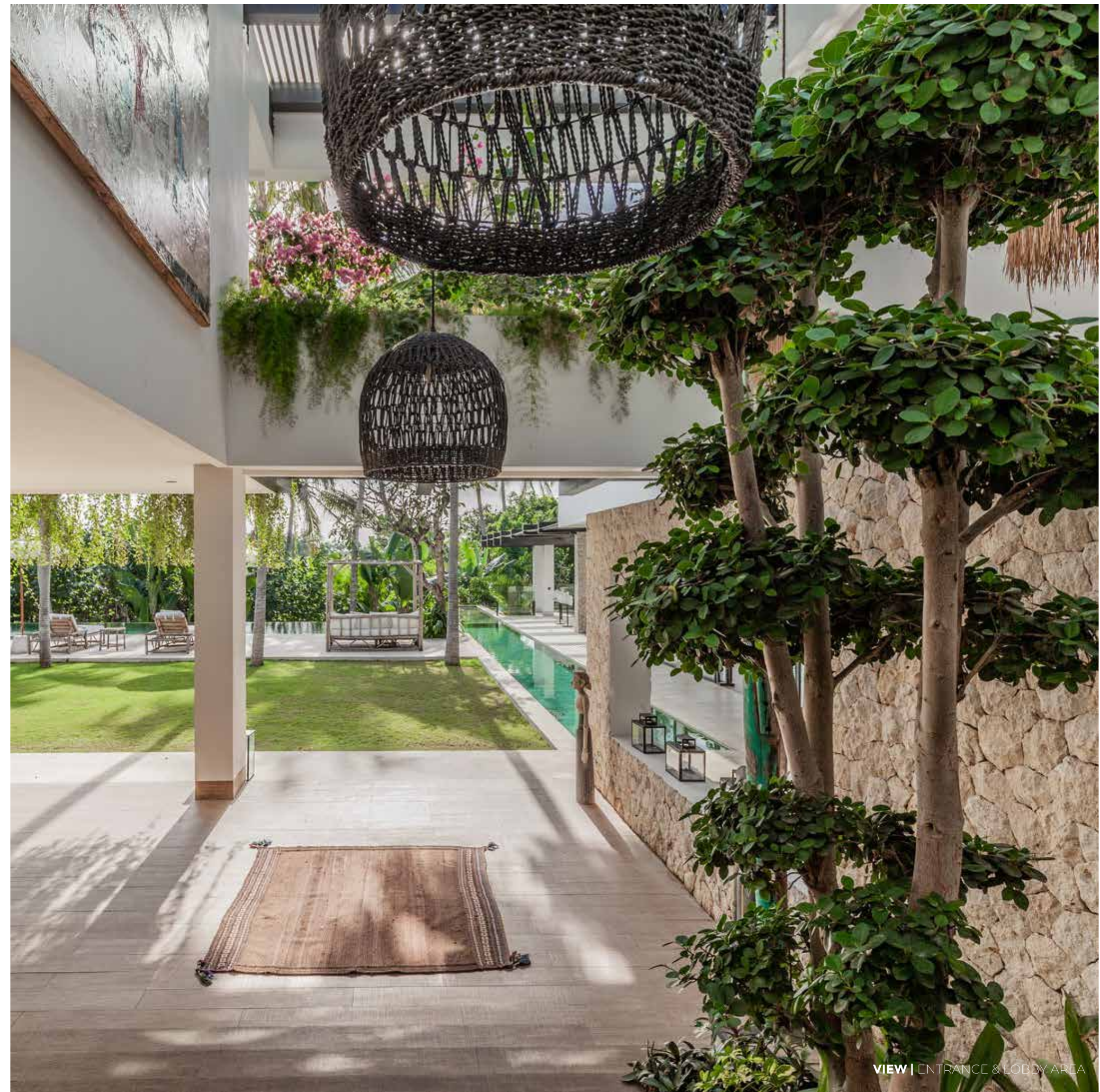




VIEW | LIVING ROOM



ENTRANCE & LOBBY | The entrance of this tropical villa welcomes guests with a sophisticated blend of natural elements and an open, inviting layout. The lobby walls are elegantly adorned with natural limestone, adding a refined yet earthy texture, while wood-style tiles line the floor, enhancing the warmth and continuity with the villa's design. A gracefully placed bonsai tree introduces a touch of greenery, harmonizing with the skylight above, which features a pergola that filters in the gentle sunlight. This spacious lobby offers an immediate view of the lush greenery beyond, allowing the beauty of the surrounding landscape to unfold the moment you enter. Bathed in the warm glow of the Bali sun, the entrance sets a serene tone, blending elegance and nature in a seamless first impression.



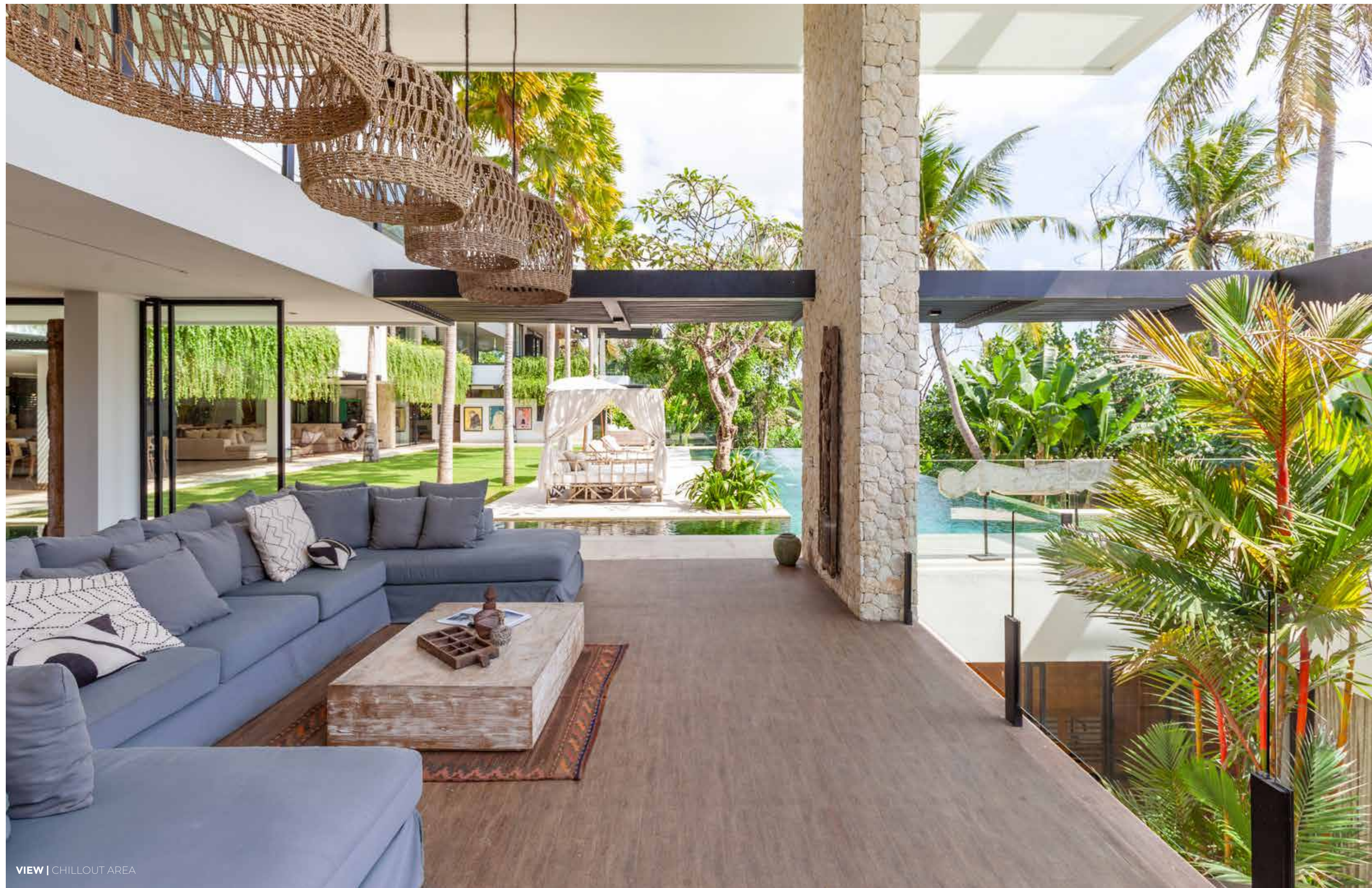
VIEW | ENTRANCE & LOBBY AREA



VIEW | PERSPECTIVE MAIN GARDEN & POOL

MAIN GARDEN AND POOL | The main garden radiates a tranquil warmth, inviting guests into a tropical sanctuary where sunlight floods the lush landscape, highlighting the rich textures of Balinese-inspired foliage that intertwines with artfully arranged stone paths in natural, neutral hues; set within the heart of the tropical surroundings, this cozy haven opens to expansive rice field views, blending seamlessly with the environment to create an immersive experience where a cool, refreshing breeze intertwines with the warmth of the day, offering a harmonious escape that feels both peaceful and profoundly connected to the essence of the land.





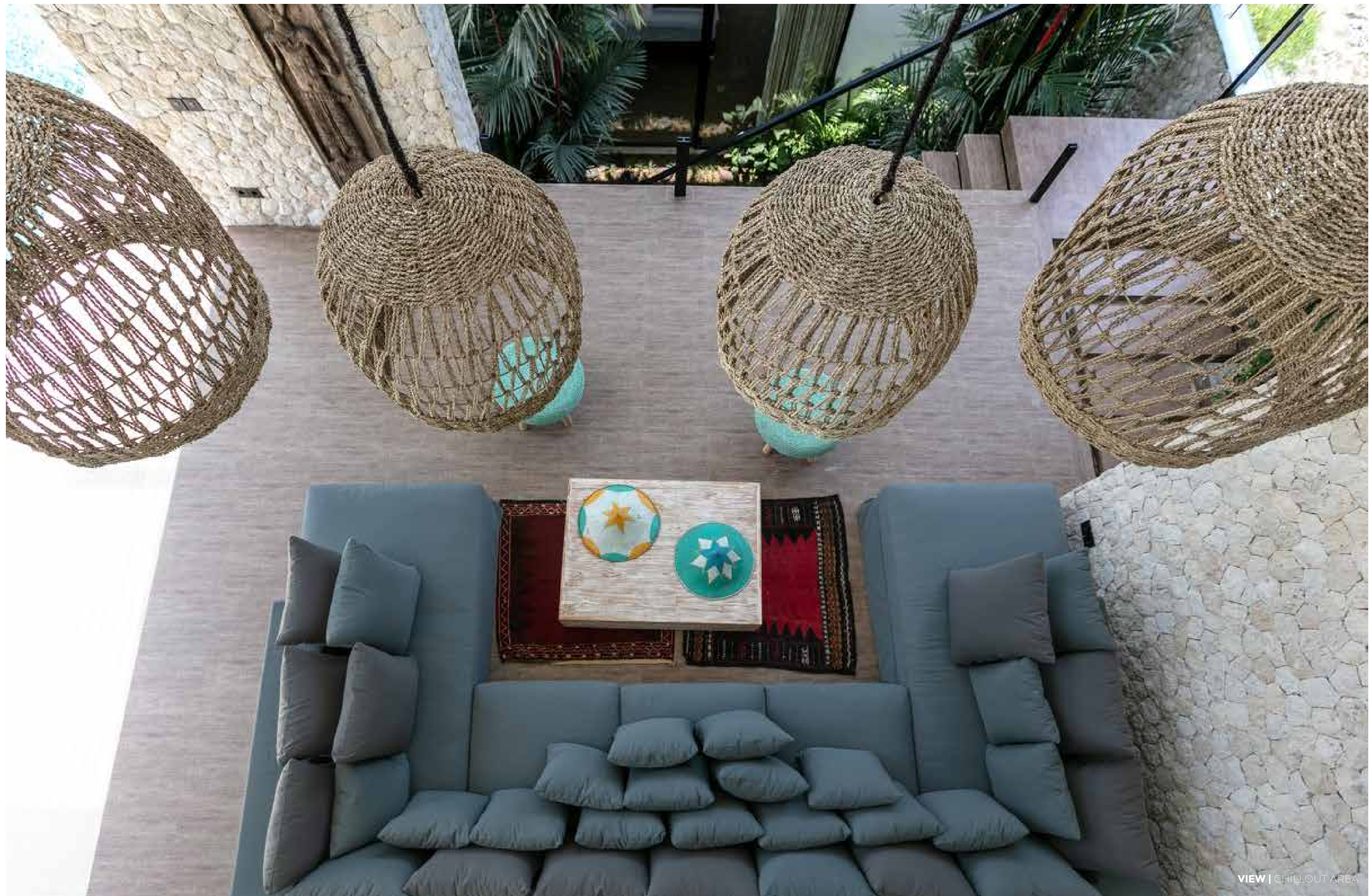
VIEW | CHILLOUT AREA



CHILLOUT | The villa's chillout area offers a seamless blend of openness and comfort, where the warmth of natural sunlight streams through the vibrant, lush greenery of the surrounding tropical landscape, creating a tranquil escape that truly embodies the peak of Bali living; this thoughtfully designed space invites guests to relax and unwind as they settle into cozy seating arranged to capture uninterrupted views, allowing the beauty of the tropical surroundings to fill the senses, while the gentle breeze and sounds of nature complete a soothing, immersive experience perfect for escaping the everyday and savoring the scenery.



VIEW | LOBBY



VIEW | CHILLOUT AREA





KITCHEN | The villa's kitchen is a warm, inviting space where rich wooden finishes blend seamlessly with natural stone elements, creating a striking contrast that feels both cohesive and elegant; with a wooden floor underfoot, this kitchen invites activity and connection, offering a perfect blend of functionality and style, where the natural textures and subtle tones of wood and stone bring a sense of harmony to this lively, central area ideal for cooking, gathering, and enjoying the tropical surroundings.



VIEW | DINING ROOM AREA



DINING ROOM | The villa's dining room exudes a warm, airy ambiance with walls in soft, neutral white that create a harmonious backdrop for the natural textures within; a light-colored wood slab serves as the dining table, adding an organic touch to the space, while a subtle crack on the wall brings character, hinting at the raw beauty of the surroundings; bathed in natural light, this inviting area becomes a serene setting for meals, blending minimalist elegance with a relaxed, tropical charm.



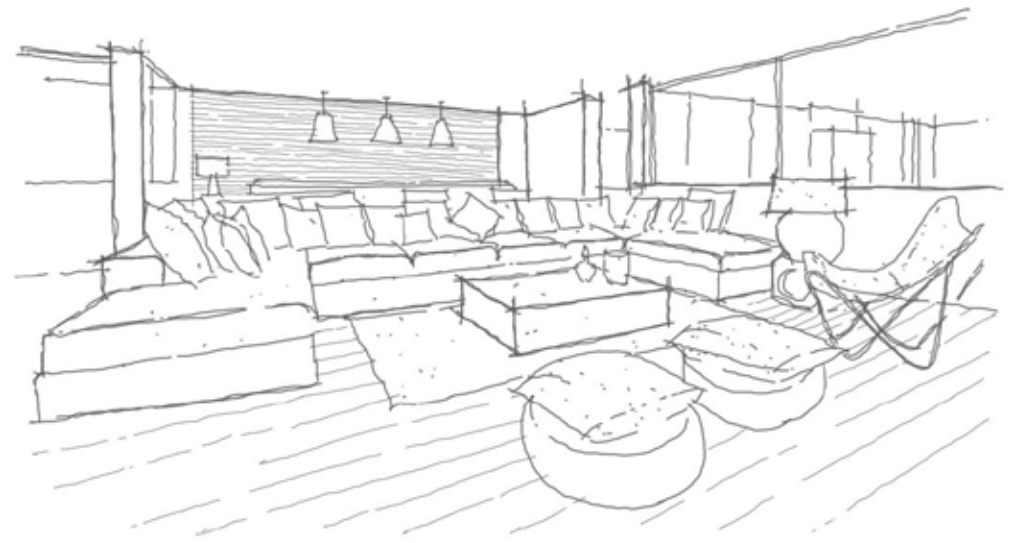
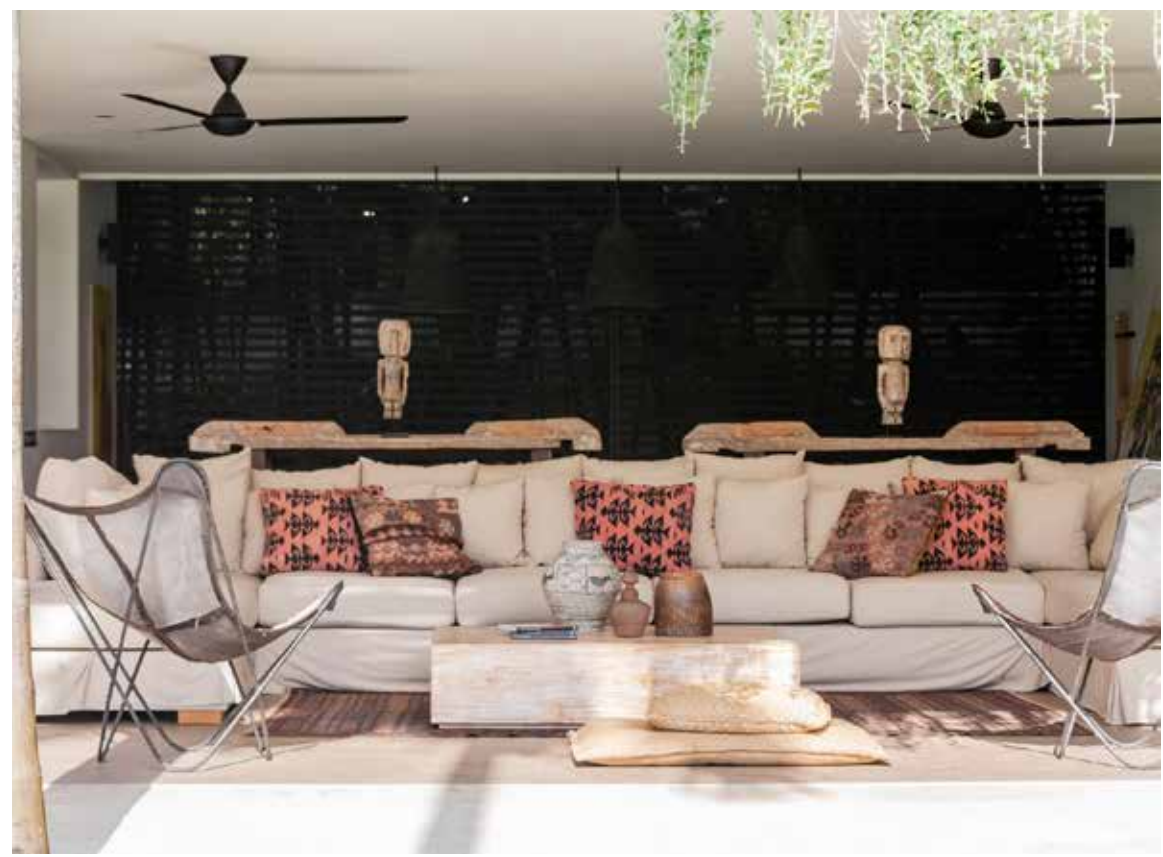
SUNBED AND POOL | The villa's sunbed and pool area exudes elegance and tranquility, featuring an infinity pool that extends outward, its emerald-green waters blending seamlessly with lush tropical foliage and vast rice paddies. A charming water fountain adds a soothing element to the ambiance, its gentle flow enhancing the serene atmosphere. Sunbeds bask in warm natural light, inviting guests to unwind in comfort and take in the stunning views. As sunset approaches, the pool area transforms, with golden hues reflecting off the water's surface and the fountain creating a mesmerizing dance of light, resulting in a captivating ambiance. This sophisticated outdoor retreat captures the essence of luxury and the beauty of Bali's tropical surroundings, offering an immersive experience that harmonizes with the villa's refined design.

VIEW | POOL AREA



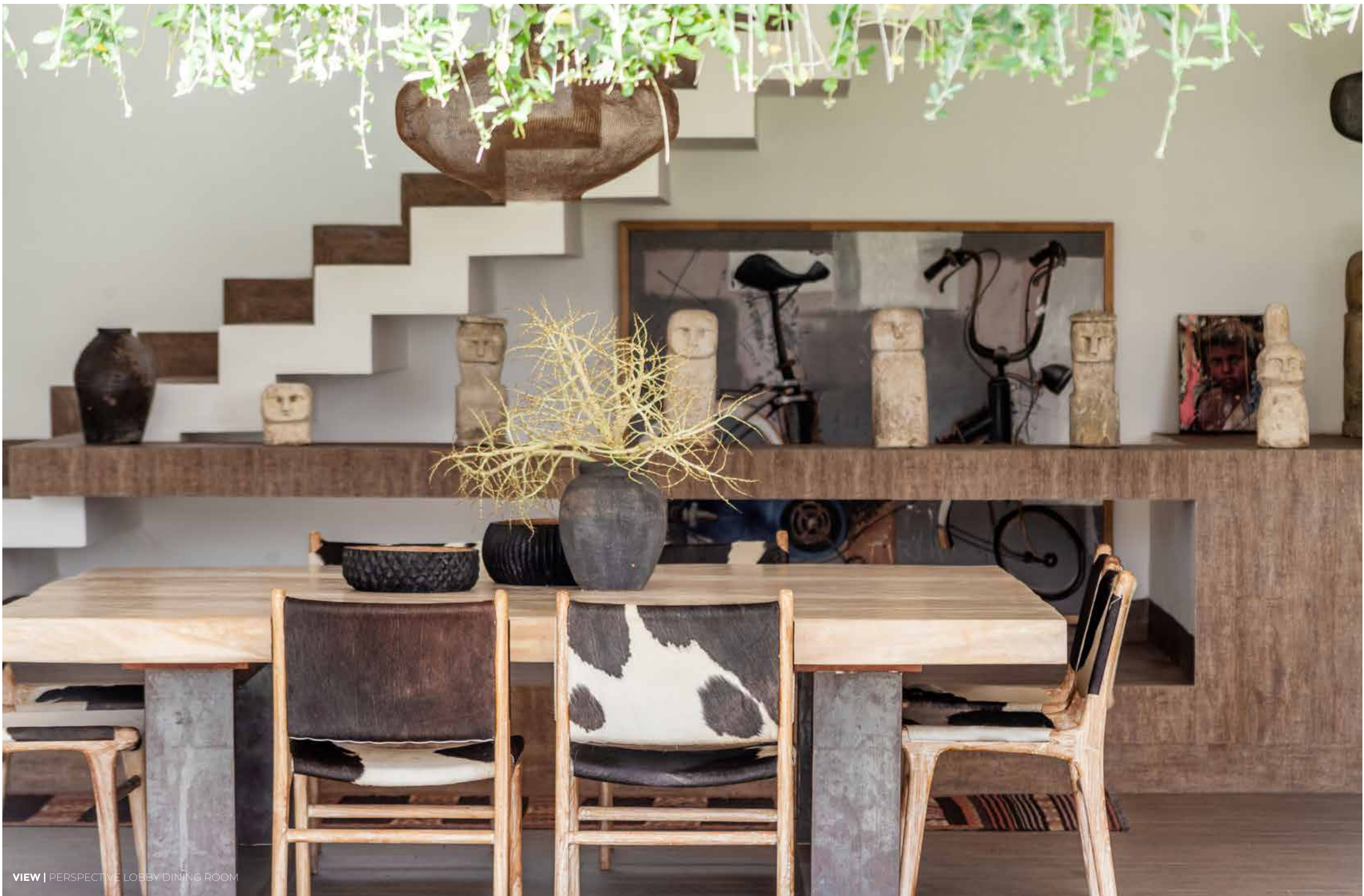


VIEW | MAIN LIVING AREA

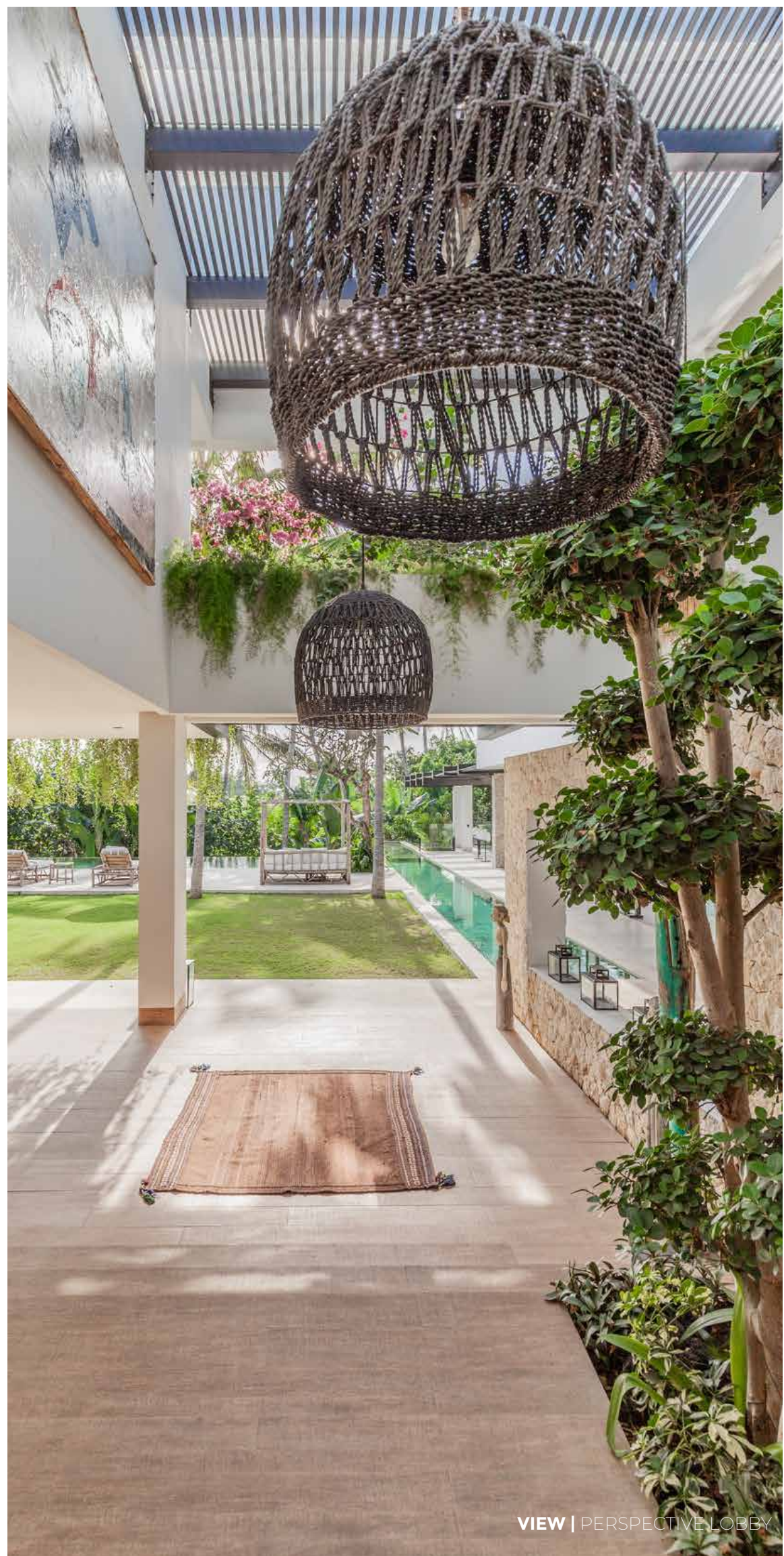


LIVING ROOM | The villa's living room is an inviting, open space that blends warmth with sophistication, creating a cozy haven where relaxation and style meet seamlessly. Designed to accommodate gatherings, it offers ample room for entertaining guests or enjoying cherished moments with family and friends, capturing the essence of tropical living. The comfortable seating arrangements encourage conversation and connection, while the inviting atmosphere makes it ideal for both lively social occasions and quiet moments spent reading or simply unwinding, offering a versatile retreat for any occasion.





VIEW | PERSPECTIVE LOBBY DINING ROOM



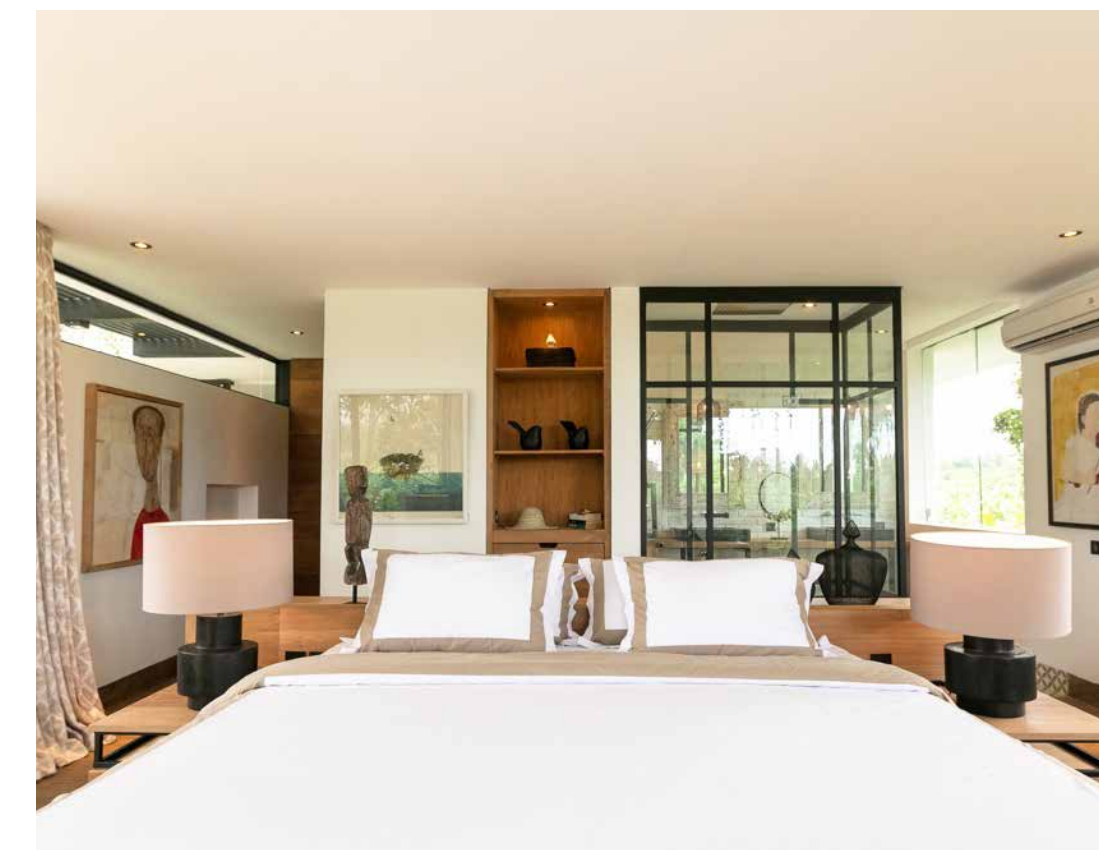
VIEW | PERSPECTIVE LOBBY



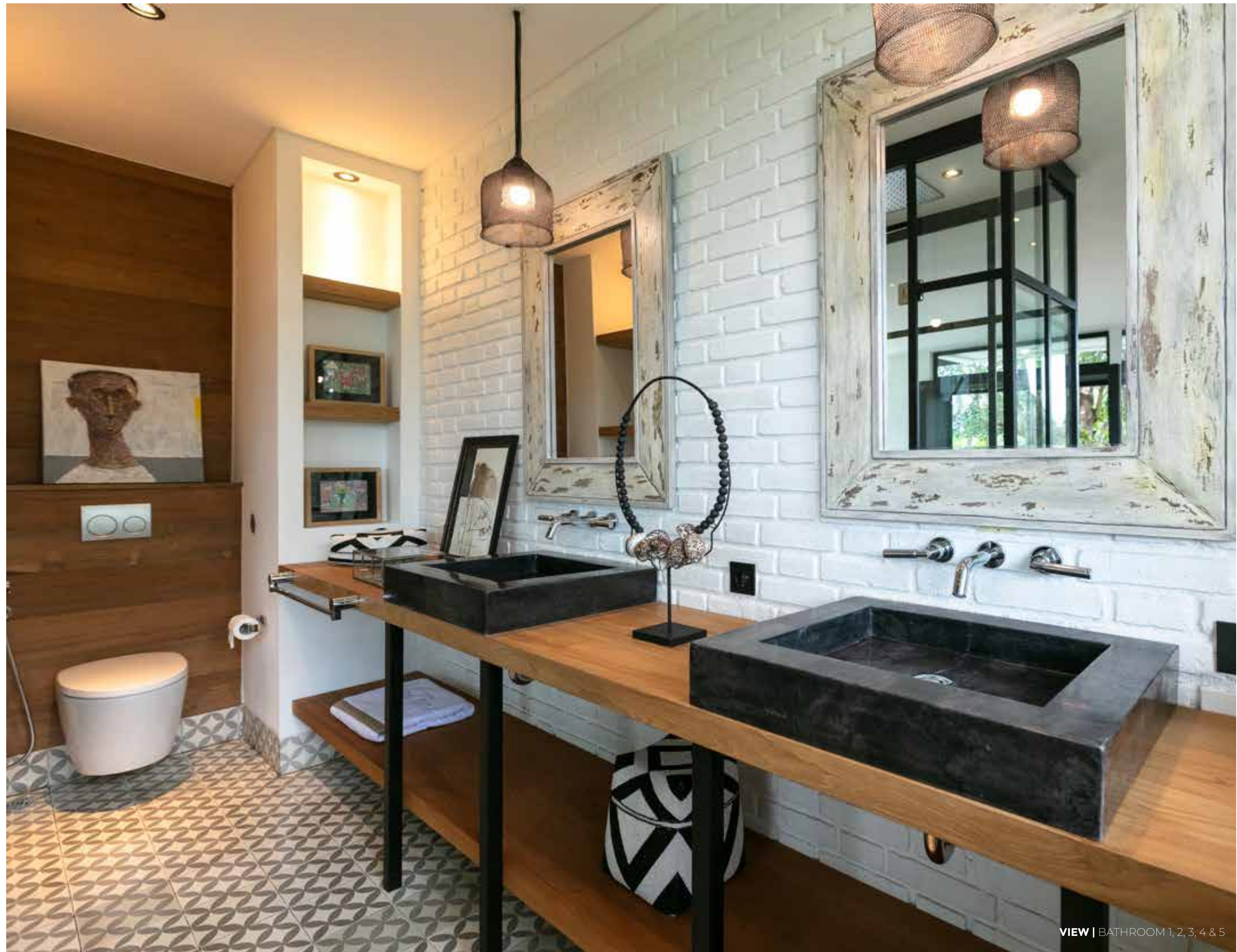
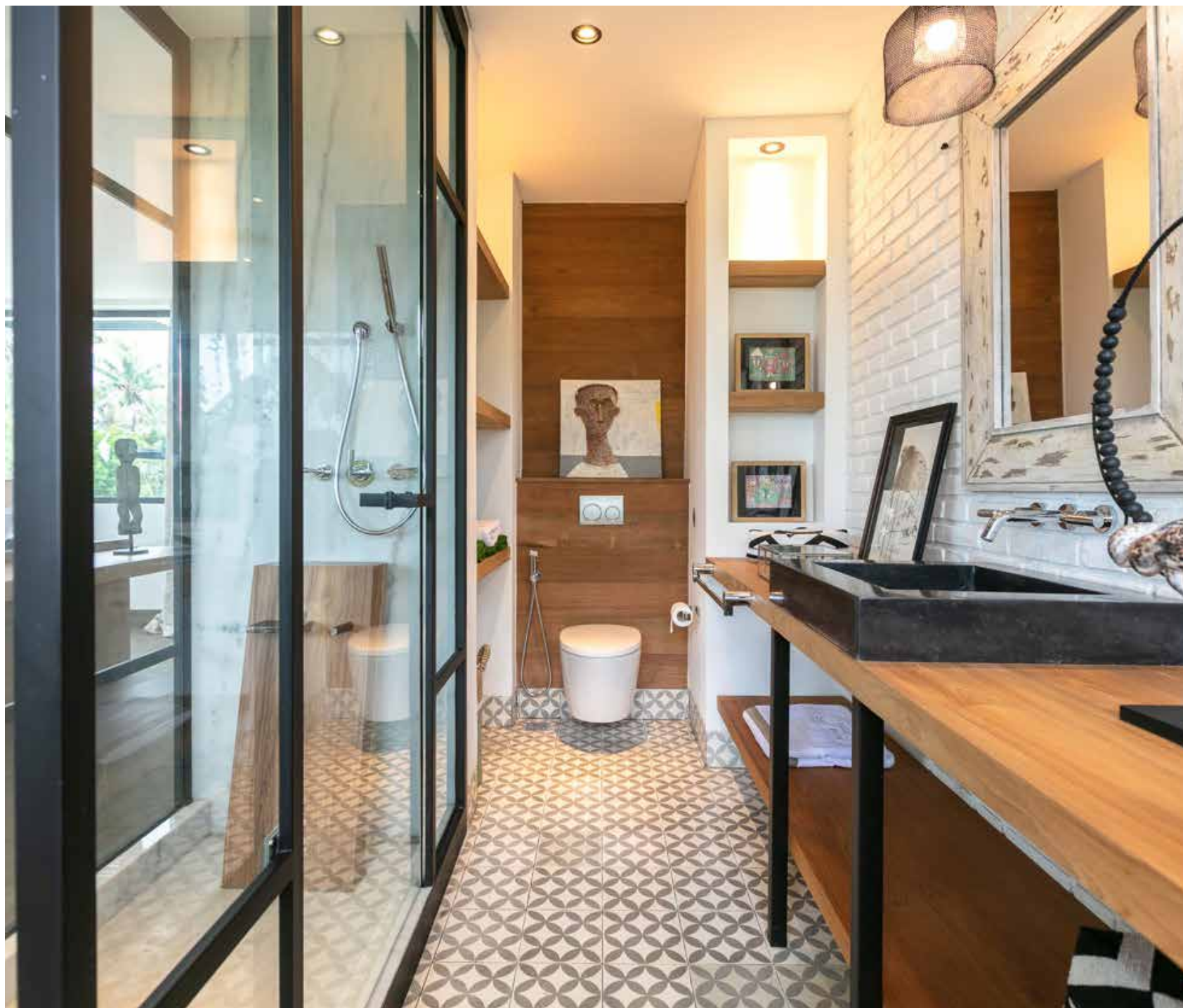
VIEW | POOL AREA & SUNBED



VIEW | GUEST BEDROOM



BEDROOMS 1, 2, 3, 4 & 5 | The villa's bedroom is a serene sanctuary designed for relaxation and comfort, featuring expansive windows that frame lush tropical views and invite abundant natural light, creating a warm and tranquil atmosphere. A thoughtfully placed bow window adds a charming touch, offering a cozy spot for reading or quiet daydreaming, while the warm color palette enhances the inviting ambiance. This spacious bedroom harmonizes luxurious comfort with a seamless connection to nature, making it an idyllic retreat that captures the essence of tropical living.



BEDROOMS 1, 2, 3, 4 & 5 | The villa's bathroom exudes elegance and tranquility, where neutral tones and warm ambient lighting create a soothing atmosphere that invites relaxation. Natural light flows generously into the space, enhancing the earthy textures and rich details. Wooden elements combine seamlessly with sleek black iron accents, adding a refined contrast that emphasizes sophistication. From the floor to the ceiling, each material is carefully chosen and harmoniously integrated, blending organic warmth with contemporary elegance to create a luxurious, serene retreat that captures the essence of tropical refinement.





MASTER BEDROOM | The master bedroom is a refined oasis of tranquility, bathed in natural light from large windows and an elegantly shaped bow window that offers expansive views of the surrounding tropical greenery. Generous openings and a unique window wall with subtle cracks blend architecture with nature, inviting the lush landscape to become part of the room's ambiance. The adjoining master terrace opens seamlessly to the outdoors, creating a private sanctuary that is both luxurious and connected to the beauty beyond. The natural, soothing color palette enhances the calm atmosphere, making this master bedroom a sophisticated escape that embraces the serene essence of tropical living.

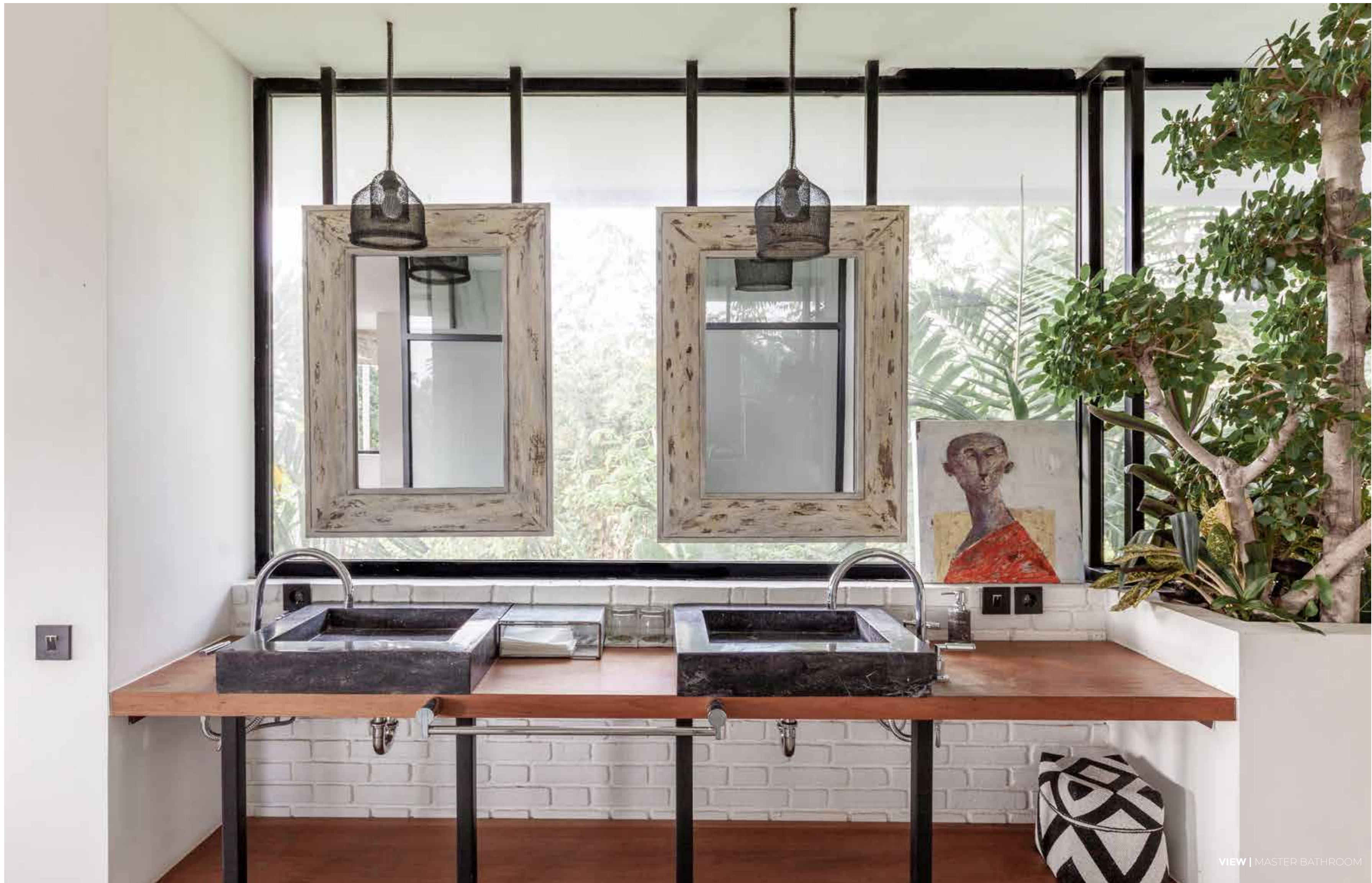


VIEW | MASTER TERRACE AREA





MASTER BATHROOM | The bathroom is a tranquil retreat that embodies the essence of tropical living, showcasing a harmonious blend of plants, wood, and stone, enhanced by abundant natural light that illuminates the space. Expansive windows frame breathtaking views of the lush greenery outside, creating a seamless connection to nature that elevates the bathing experience. The thoughtfully designed shower area provides a refreshing escape, while a unique sink design serves as a striking focal point, combining functionality with artistic flair. This elegant space invites relaxation and rejuvenation, embodying sophistication while celebrating the beauty of its natural surroundings.



VIEW | MASTER BATHROOM







VIEW | UPSTAIR LIVING AREA



UPSTAIR LIVING | The upstairs living area is an inviting open space designed for relaxation, where abundant sunlight pours through large windows, illuminating the room and creating a warm, comfortable atmosphere. Surrounded by lush tropical plants, this serene retreat offers a refreshing connection to nature, enhancing the overall sense of tranquility. The thoughtfully curated color palette features a combination of contrasting tones that blend seamlessly, adding depth and sophistication to the space. This harmonious environment invites residents and guests to unwind, making it an ideal spot for leisurely afternoons or intimate gatherings, all while celebrating the beauty of the tropical surroundings.

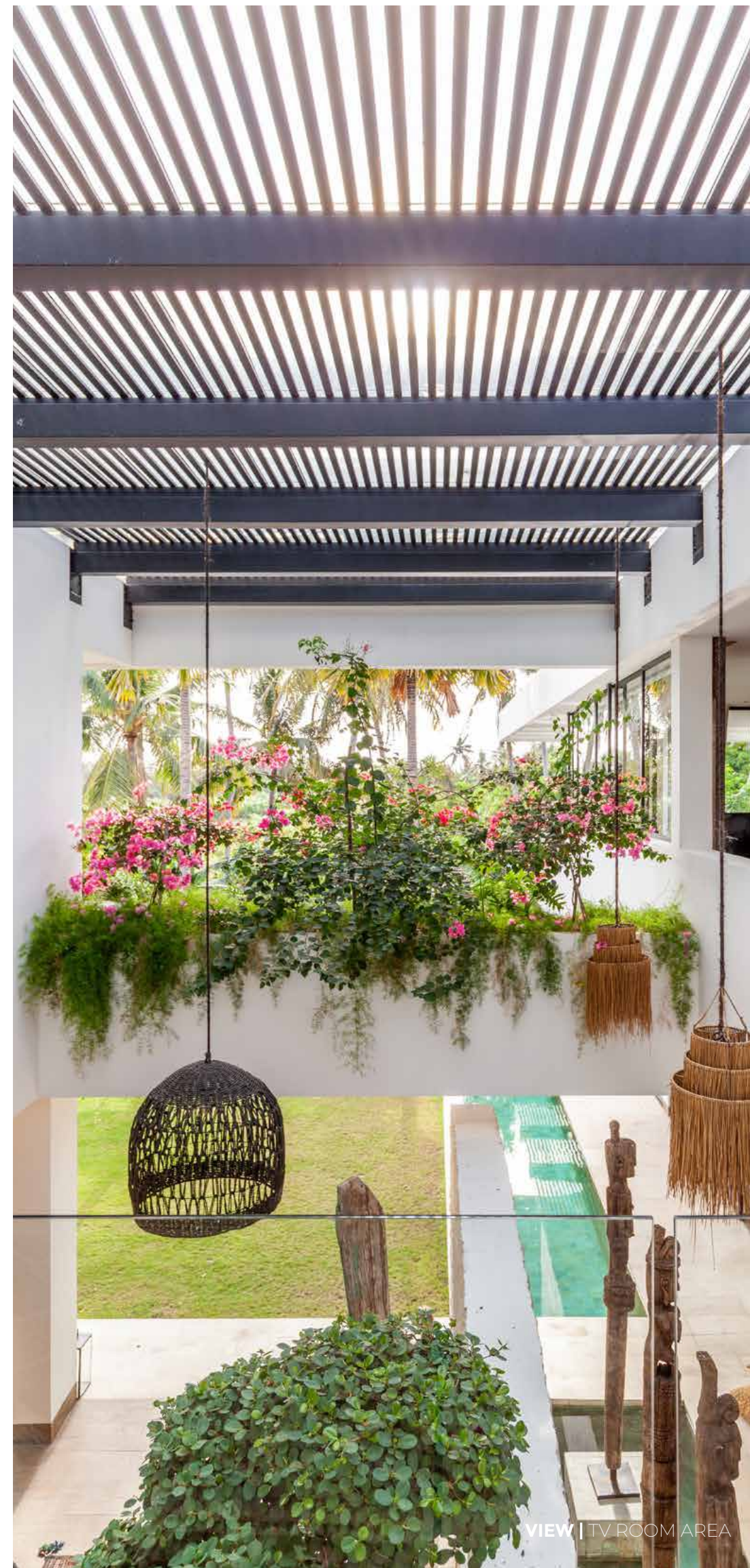
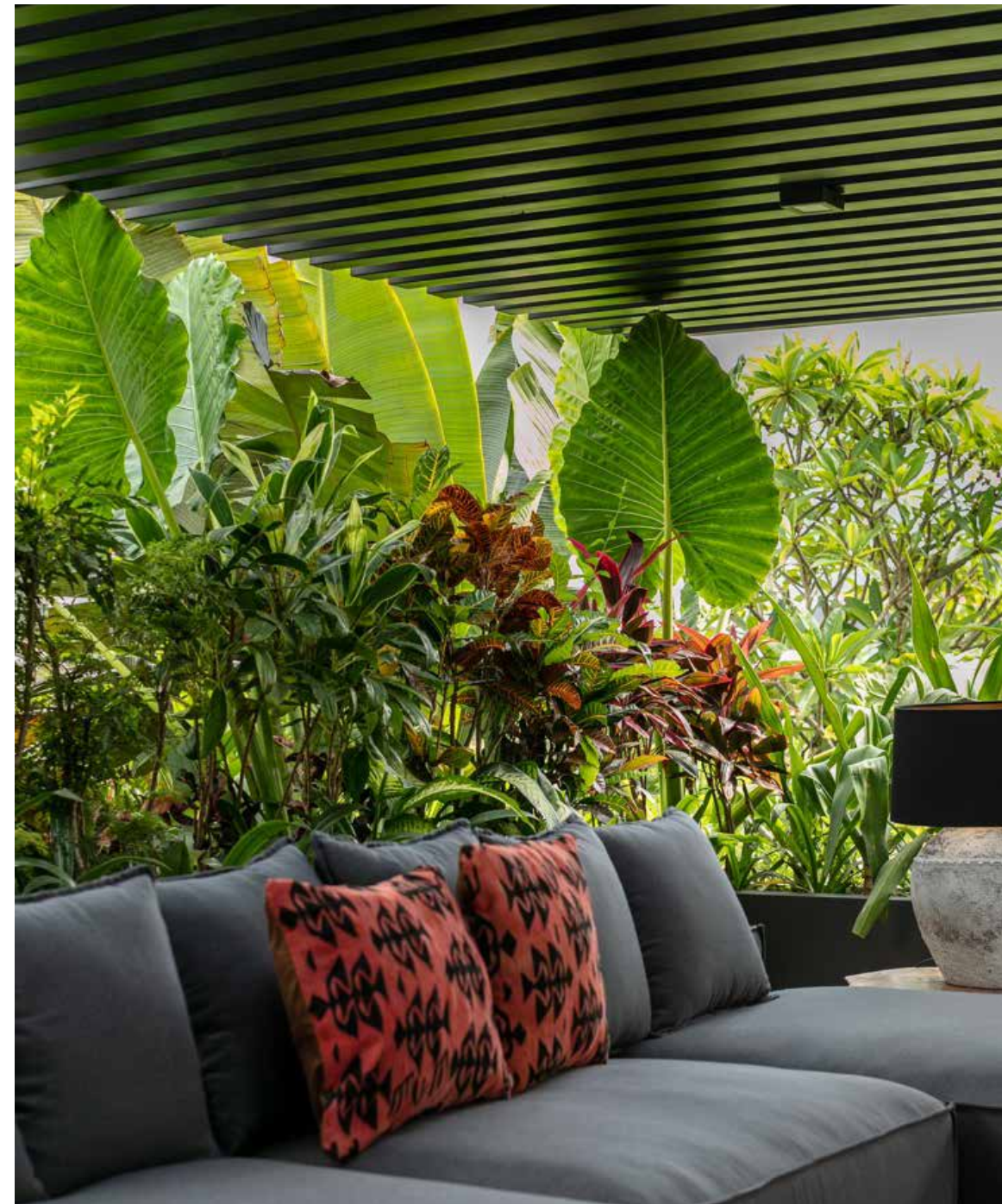


TV ROOM AREA | The TV room serves as a cozy sanctuary, thoughtfully designed for spending quality time with family and friends while providing a welcome escape from the bustling city outside. This inviting space encourages guests to unwind and make themselves comfortable, enveloped in a warm atmosphere that promotes relaxation. With plush seating and a soothing atmosphere, the room creates the perfect environment for enjoying movie nights or engaging in lively conversations, allowing residents to savor moments of togetherness in a tranquil and sophisticated setting.

VIEW | TV ROOM AREA



LANDSCAPE

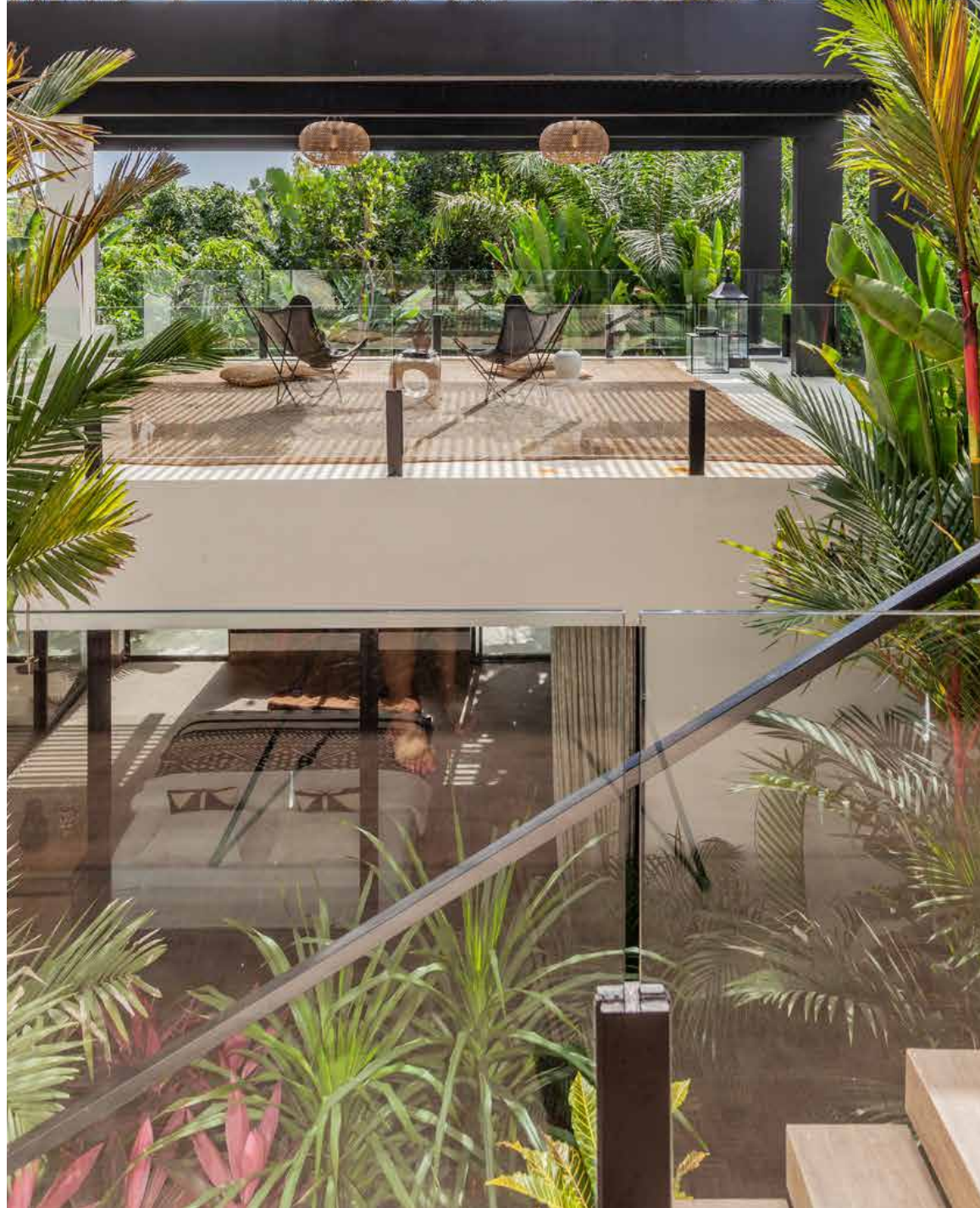
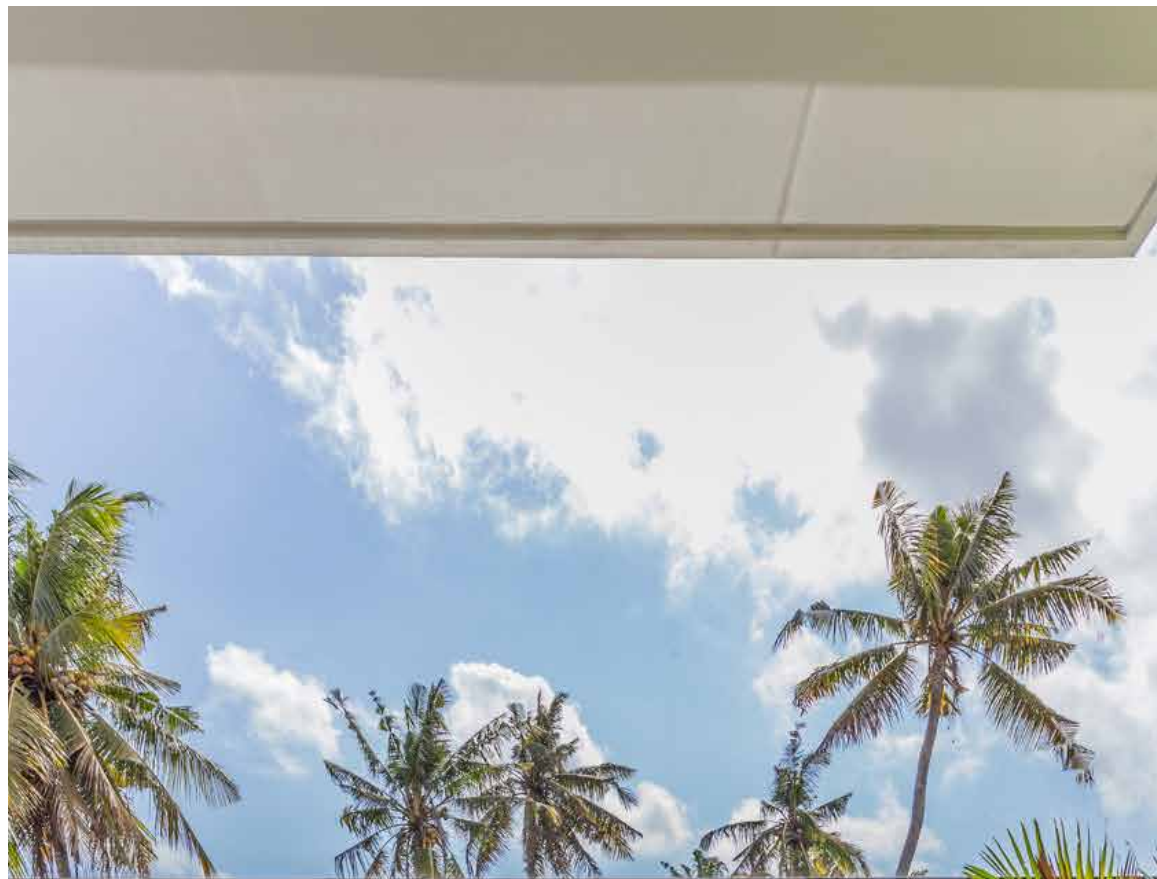


LANDSCAPE | The landscape of this tropical villa is meticulously curated to create a lush and sophisticated environment that seamlessly complements its serene surroundings. Planter boxes adorned with Lee Kuan Yew plants and elegantly sculpted bonsai trees bring a refined sense of balance and artistry, while palms near the pool sunbed area introduce a touch of tropical grandeur. A vibrant array of tropical bushes fills the garden spaces, enriching the villa's ambiance with layers of greenery and texture. This thoughtful selection of tropical flora, combined with all kinds of native greenery, creates a captivating, immersive experience where each plant contributes to a harmonious and elegant landscape, bringing both vitality and a distinct sense of place to the villa's outdoor setting.



VIEW | MAIN GARDEN AREA





VIEW | MASSAGE AREA



FELIPE GONZALEZ JIMENEZ DE LA ESPADA

ARCHITECT & DESIGNER

Felipe González Jiménez de la Espada leads an international team of professionals, emphasizing the importance of uniqueness in every moment to create distinctive experiences for clients, regardless of project scale. We translate diverse client wishes into functional and enduringly beautiful creations. With a blend of modern and traditional influences, our focus on quality ensures that luxury and simplicity exude elegance.

Since 1995, Felipe González Jiménez de la Espada has acquired an impressive portfolio of private, corporate and commercial clients in 15 countries around the world. Its headquarters are based in Madrid, Spain.

THE PRACTICE

"The art of listening". Founded in 1995, Sukyf is an internationally renowned architecture design studio. Recognized for its multidisciplinary approach and the talent of balancing functionality, aesthetics into each one their creations and designs. Sukyf Studio creates bespoke modern minimalist architecture, interiors, furnitures and product designs. The concept of blending exterior, interior and product design skills with context, culture and environment. We feel, we enjoy and the most important part of an studio firm we listen to our clients, spending time with them letting them open themselves to us in order to squeeze until the last drop of their personality in order to translate that into the character of each individual architecture or element that we design, always searching for the perfect fusion on elements for that one singular design.

Our purpose is to shift and exceed the expectations of every single one of our clients either private or corporate ones. Quality as a philosophy, passion on every single line, natural materials, simplicity, elegance and the maximum combination on three element, textures or colors on every creation drives you to an exceptional detail result. Innovation, timeless appeal, proportions and comfort as fundamentals on every design.



scan for video



For further details please contact us at email below:
felipe@sukyf.com



est. 2019





SAPTA BAYUH

P R I V A T E V I L L A

www.sukyf.com || info@sukyf.com