

NORIS
PRIVATE VILLA





ARCHITECTURE BY

FELIPE GONZALEZ
RAHAYU SITHA
EKHO ADI PUTRA
DENI YUSRIZAL
JUANA ASA
MIKA MUKHTA
KADEK ARIYASA

INTERIOR BY

ANN
NOMY
WANGSA SWANDEWI

ILLUSTRATION BY

KADEK ARIYASA
AYU SRI SUJATI
WANGSA SWANDEWI

ARRANGED BY

KADEK ARIYASA
AYU SRI SUJATI

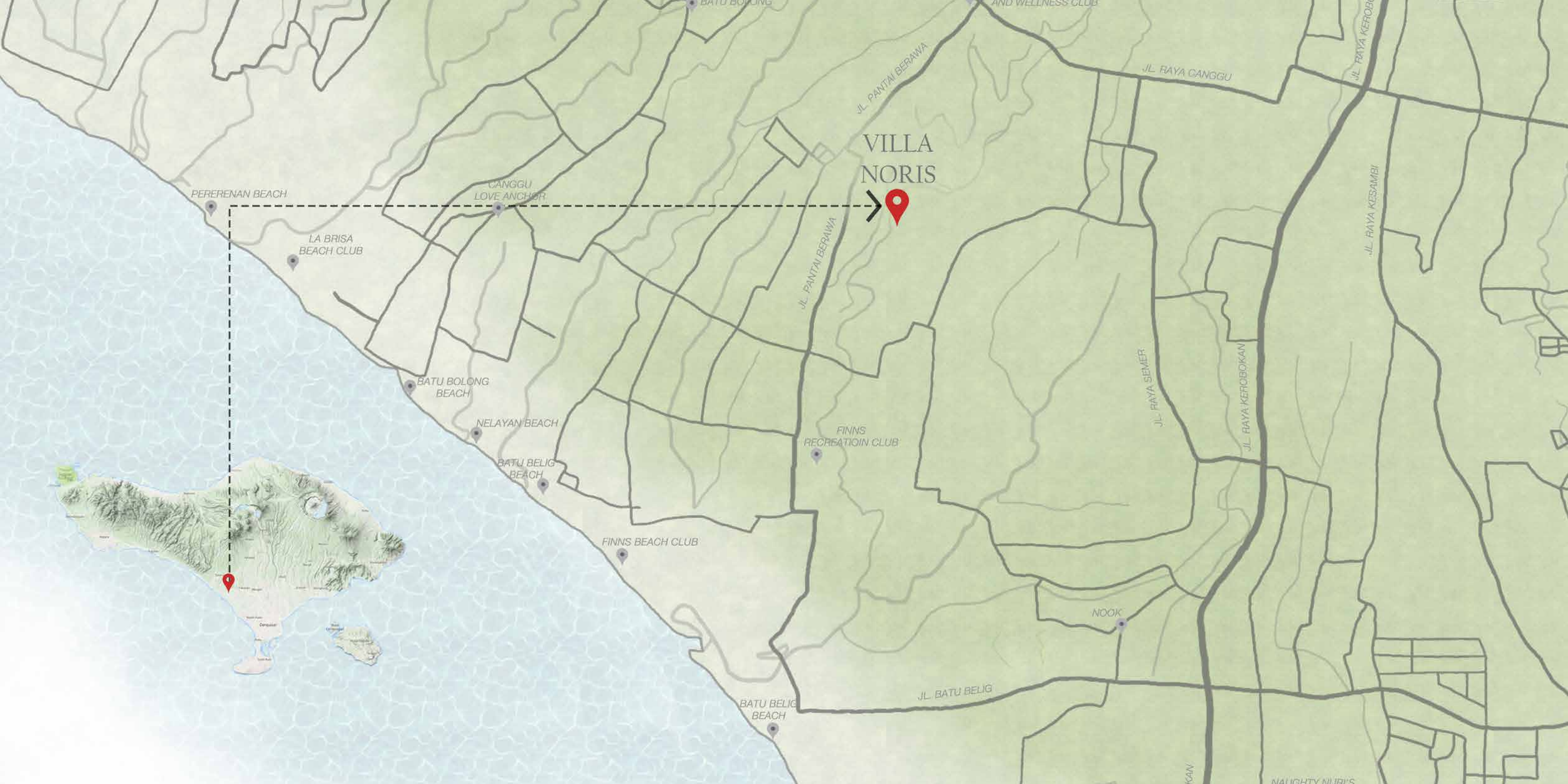
CONTENT

CREDITS.....	6
CONTENT.....	7
WELCOME TO NORIS.....	9
LOCATION.....	13
MASTER PLAN.....	17
THE VILLA.....	21
SUKYF ARCHITECTS.....	91

WELCOME TO
NORIS



LOCATION



VILLA
NORIS



PERERENAN BEACH

LA BRISA
BEACH CLUB

CANGGU
LOVE ANCHOR

BATU BOLONG
BEACH

NELAYAN BEACH

BATU BELIG
BEACH

FINNS BEACH CLUB

FINNS
RECREATION CLUB

NOOK

BATU BELIG
BEACH

JL. BATU BELIG

JL. PANTAI BERAWA

JL. PANTAI BERAWA

JL. RAYA GANGGU

JL. RAYA SIEMER

JL. RAYA KEROBOKAN

JL. RAYA KESAMBI

JL. RAYA KEROBOKAN

KAN

NAUGHTY NURI'S

MASTER PLAN



THE VILLA



VIEW | THE VILLA FROM CENTRE COURTYARD

Villa Noris
926 sqm

5 Bedroom Villa

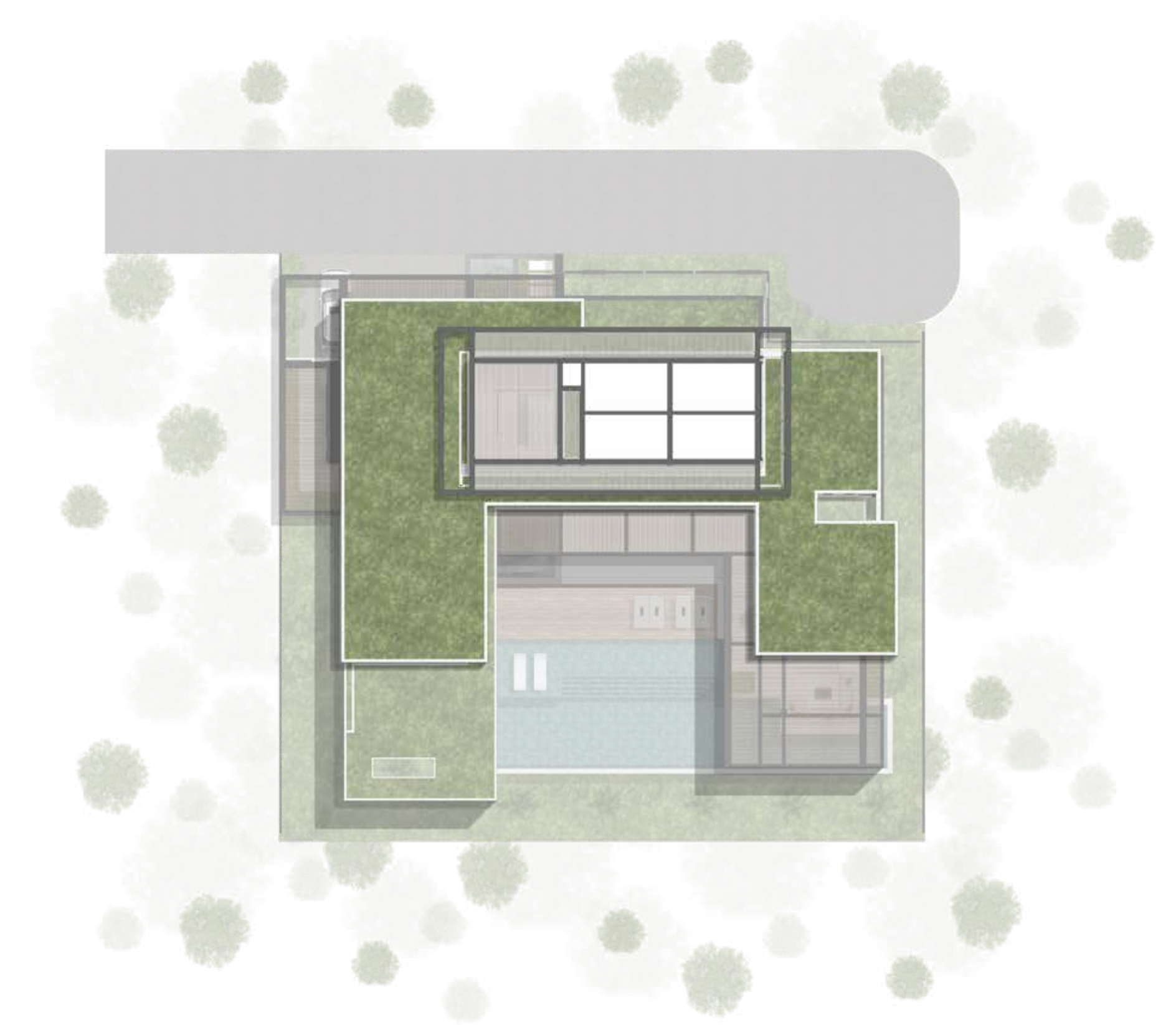
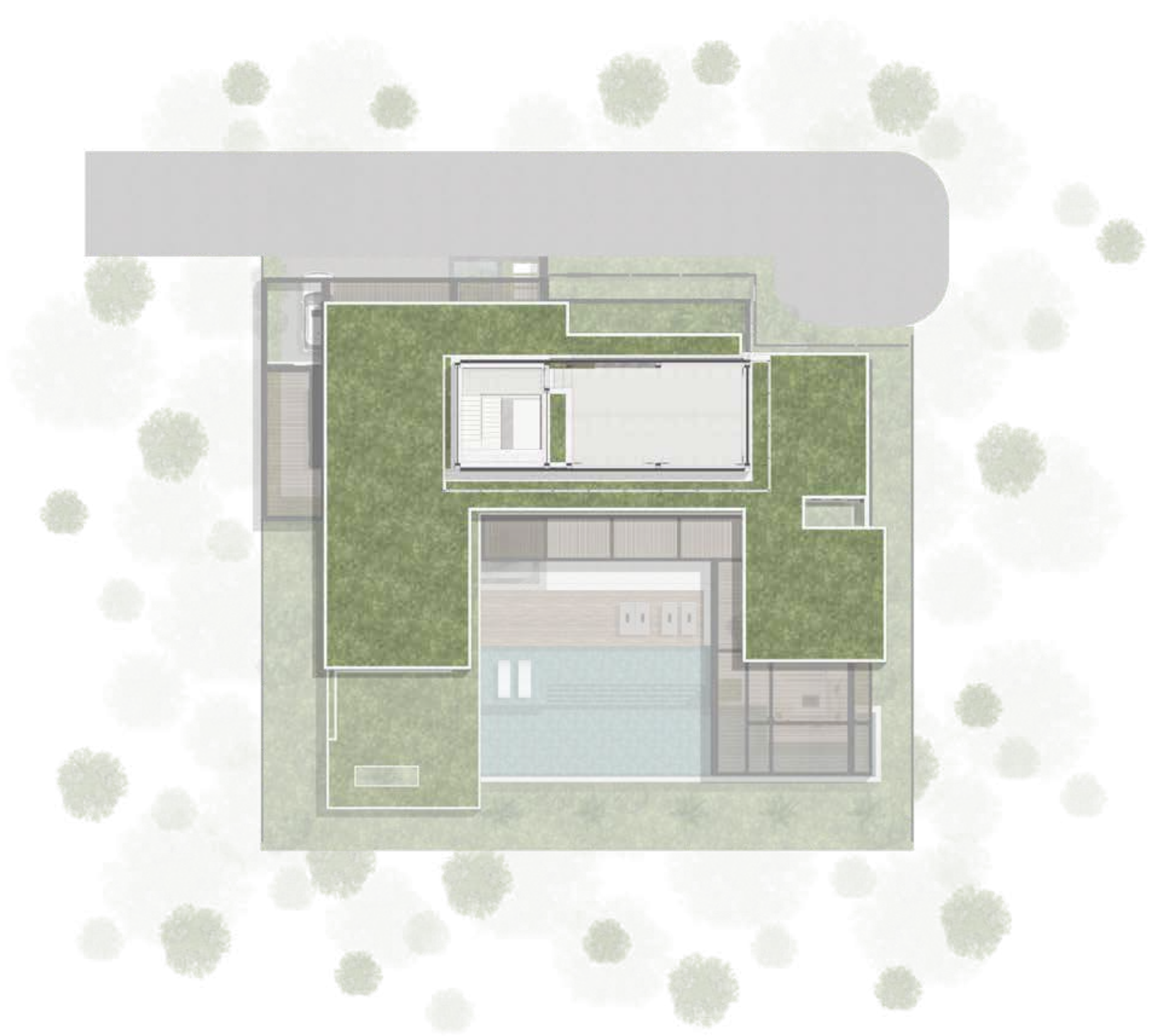
Sukyf Architects
Felipe Gonzalez

Umalas

Nestled amidst the vibrant charm of Tumbak Bayuh, Bali, Villa Noris beckons with promises of tranquility and luxury. Surrounded by charming cafes offering stunning vistas, this villa seamlessly blends into its surroundings, offering a retreat that feels like a natural extension of Bali's breathtaking landscape. With its striking architecture and lush tropical gardens, Villa Noris stands as a testament to Bali's allure, inviting guests to unwind in the embrace of its serene ambiance. Join us as we embark on a journey to discover the allure of Villa Noris, where modern elegance meets the rustic beauty of Bali's countryside. Step into a world where every corner is imbued with a sense of serenity, every moment an opportunity to immerse yourself in the magic of Tumbak Bayuh, and every stay a memory to cherish forever.





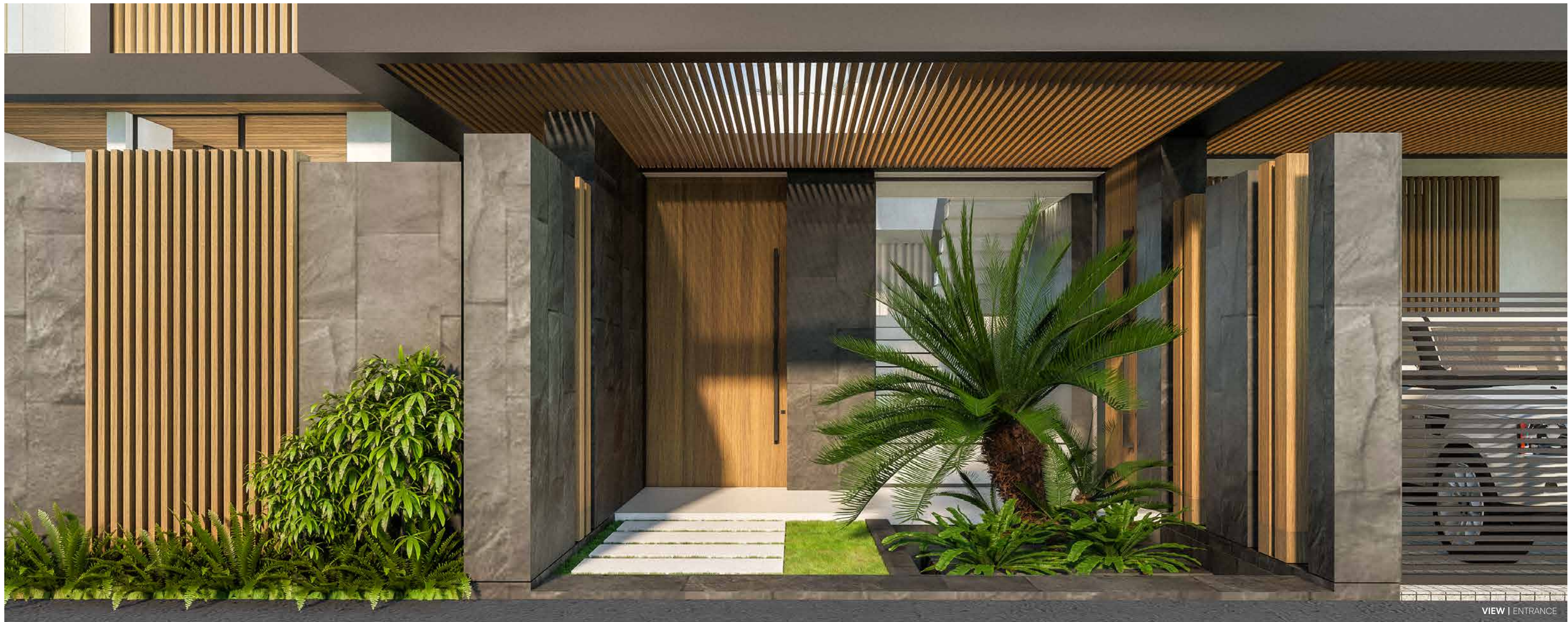








0 20 40 100

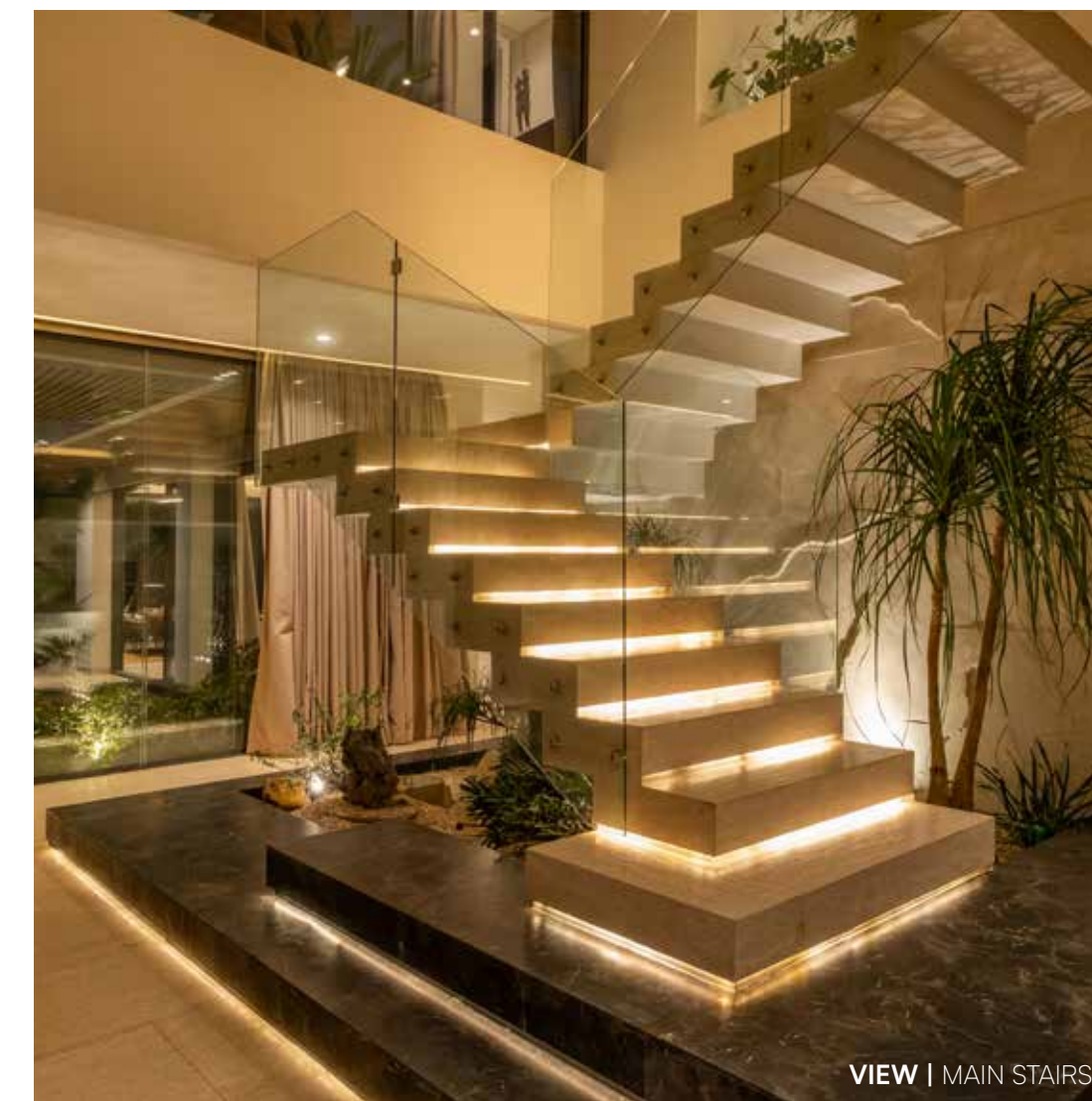


VIEW | ENTRANCE

ENTRANCE | The entrance to Villa Noris exudes a welcoming charm, featuring a grand wooden door that immediately captures attention with its impressive size and natural texture. This rustic yet elegant door is set against a stone wall, offering a striking contrast between the warmth of the wood and the cool, earthy tones of the stone. The stone wall provides an added layer of privacy while blending seamlessly with the surrounding landscape, enhancing the villa's modern tropical aesthetic. As guests approach the entrance, they walk along stepping stones beside a mini garden filled with lush greenery, which adds a touch of nature to the entryway and creates a peaceful, inviting ambiance. The entrance is also connected to the villa's garage, making it both practical and stylish. This seamless integration ensures easy access while maintaining the overall elegance of Villa Noris's design.



VIEW | LIVING AREA

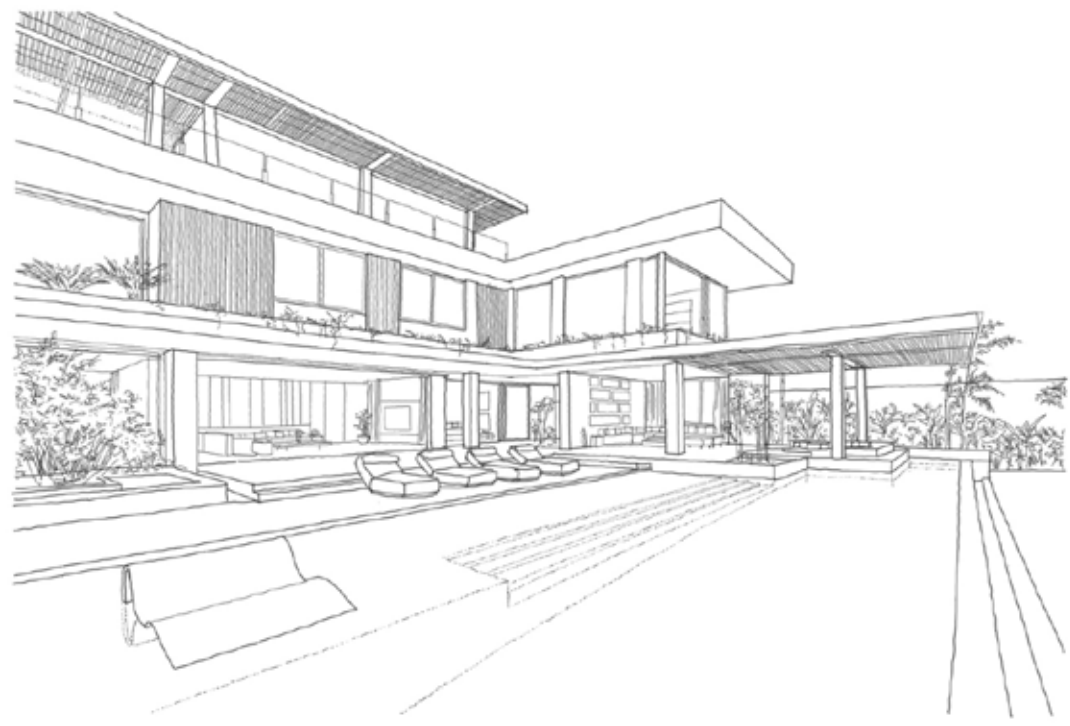


VIEW | MAIN STAIRS

LIVING AREA | In this stylish living room, a gray L-shaped sofa takes center stage, offering both comfort and modern elegance. The sofa is flanked by wooden side tables on each end, perfectly blending function with the room's natural aesthetic. A wooden coffee table sits in the middle, tying the space together with its warm tones and clean lines. The backdrop of the room features a stunning marble wall, its sleek surface contrasted beautifully by wooden slats that add texture and depth, creating a harmonious balance between contemporary and natural elements.

A standout feature of the room is the marble wall section adorned with an artwork framed in rich wood, serving as a focal point that ties together the luxurious and natural elements of the space.





VIEW | SWIMMING POOL AREA

POOL | At the heart of Villa Noris lies its captivating water feature — a sprawling, shimmering pool nestled amidst the architectural splendor of the house. This massive pool, strategically located in the center of the villa, serves as more than just a refreshing oasis; it acts as a unifying element, seamlessly blending the various spaces of the house together. As sunlight dances on its surface and gentle ripples caress its edges, the pool becomes a focal point, drawing guests into its serene embrace and fostering a sense of harmony throughout the entire villa. As dusk approaches, guests can bask in the stunning vista of the sunset over the neighboring rice fields, creating a picturesque backdrop for their leisurely moments by the pool. Whether lounging poolside or enjoying the view from within, the presence of this magnificent water feature elevates the experience of Villa Noris to new heights of luxury and relaxation.



VIEW | KITCHEN & DINING

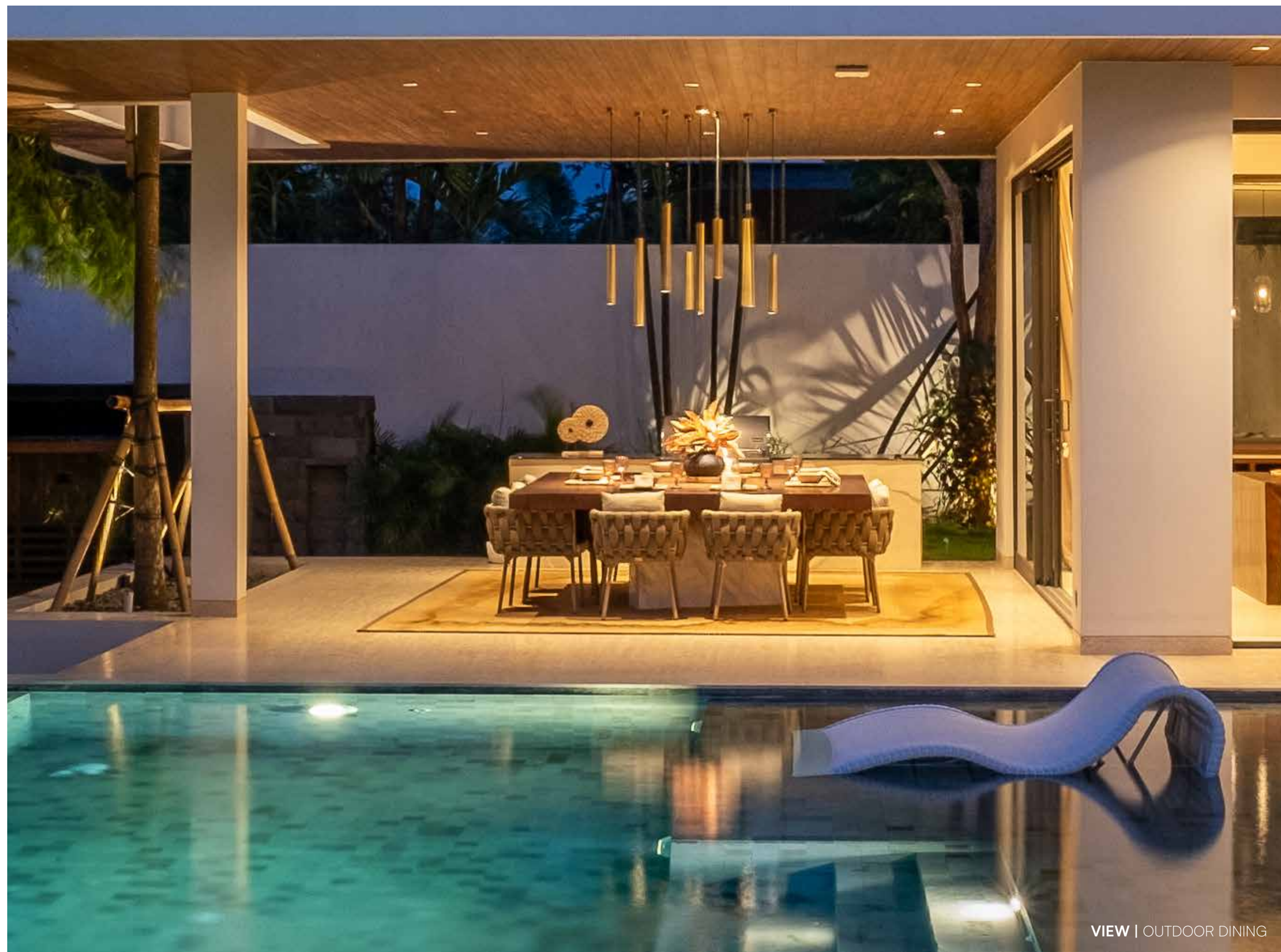
KITCHEN AND DINING | The kitchen and dining area exudes a perfect blend of modern elegance and natural warmth. White cabinets, paired with rich wood accents, create a clean and inviting atmosphere, while the kitchen island, topped with a sleek white marble countertop, adds a touch of luxury and functionality. Adjacent to the kitchen, a wooden dining table serves as the heart of the space, surrounded by comfortable gray dining chairs that provide a subtle contrast and a contemporary flair. The combination of these elements results in a harmonious and stylish environment, ideal for both casual meals and special gatherings.



VIEW | KITCHEN & DINING



VIEW | KITCHEN & DINING



VIEW | OUTDOOR DINING

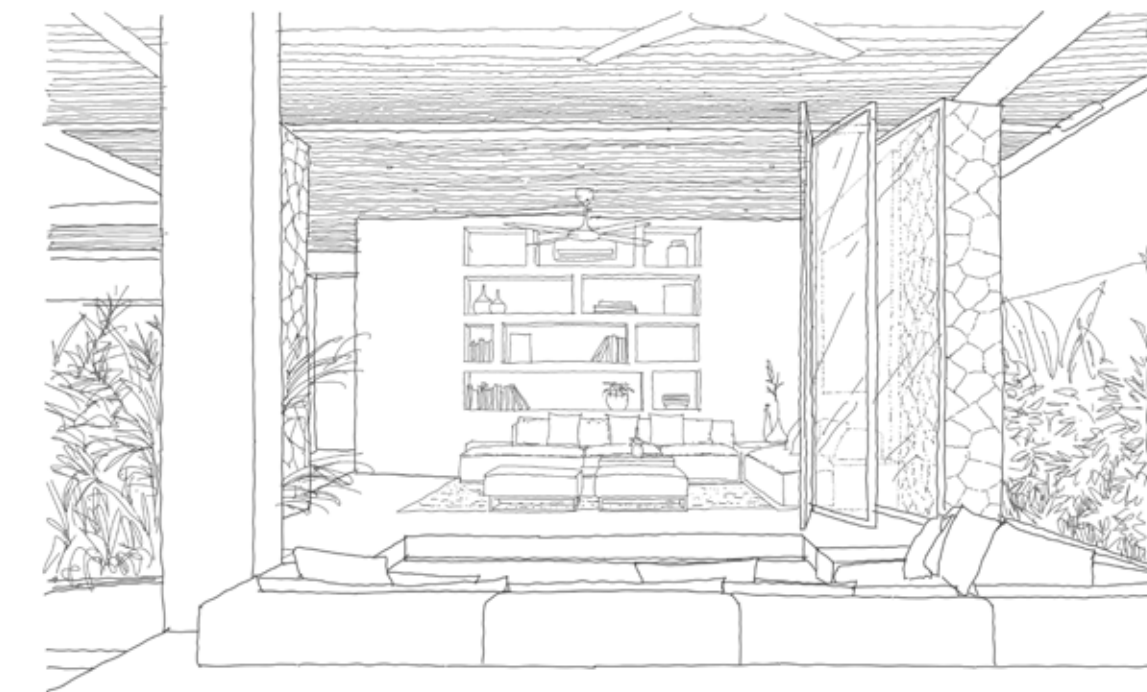


VIEW | OUTDOOR DINING

OUTDOOR DINING | The outdoor dining area offers a perfect blend of natural materials and refined design, featuring a spacious square wooden dining table with striking marble legs that serve as a bold focal point. Surrounding the table are jute dining chairs, their earthy texture adding warmth and comfort to the setting. The space is beautifully framed by a wooden ceiling and floor, creating a seamless connection between the dining area and the natural surroundings. This combination of materials results in an inviting and sophisticated outdoor dining experience, where rustic charm meets modern elegance.



VIEW | SWIMMING POOL AREA



OUTDOOR LIVING & SUNKEN | The outdoor living area is a serene retreat, featuring an L-shaped sofa with a wooden base that seamlessly blends into the natural surroundings. The sofa, offering ample seating, is anchored by a sleek marble table in the corner, providing both style and functionality. Two poufs add extra seating options, complementing the relaxed vibe of the space. At the center, a wooden coffee table with marble accents ties the elements together, merging rustic warmth with modern sophistication. This combination creates a chic and inviting atmosphere, perfect for lounging and enjoying the outdoors.

The sunken living area offers a cozy and intimate setting, highlighted by a plush beige sofa that wraps around the space, creating a welcoming and comfortable environment. At the center of this arrangement, a contemporary fire pit serves as both a focal point and a source of warmth, enhancing the ambiance with its gentle glow. The design invites relaxation and conversation, making it an ideal spot for unwinding while enjoying the warmth and light of the fire. The combination of the soft beige upholstery and the flickering flames creates a harmonious and serene atmosphere, perfect for leisurely evenings.







VIEW | BEDROOM 1



VIEW | BATHROOM 1

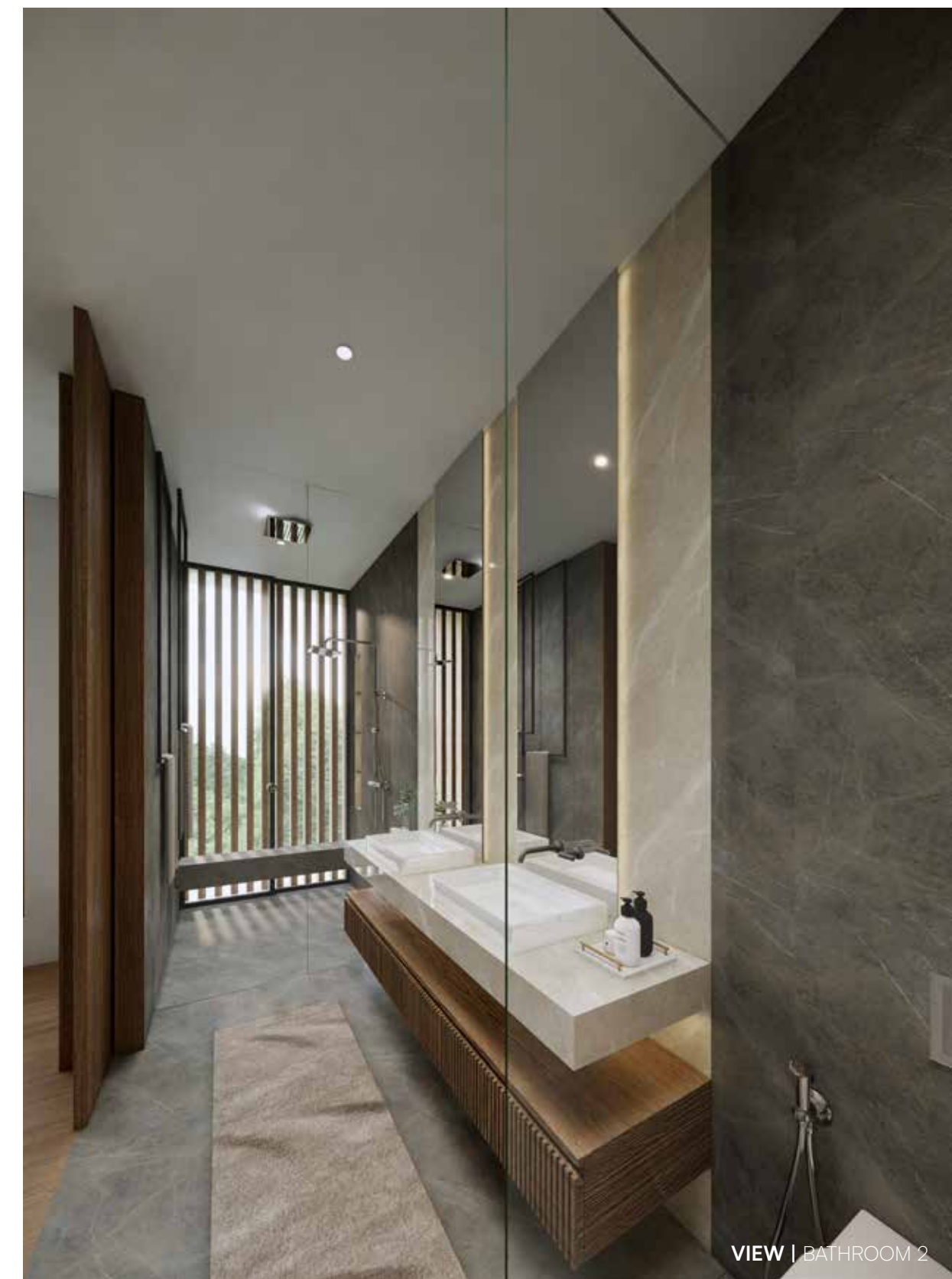
BEDROOM 1 | The bedroom exudes an elegant and tranquil ambiance, centered around a luxurious beige puffy bed base that provides both comfort and style. The bed is complemented by a matching beige padded headboard, creating a cohesive and serene look. Flanking the bed are wooden bedside tables topped with sleek marble, adding a touch of sophistication and contrast. At the foot of the bed, a puffy bench offers additional seating and a stylish accent. The wooden wardrobe, with its rich texture and warm tones, completes the room, enhancing its refined and inviting atmosphere.

Adjacent to the bedroom, the bathroom exudes modern elegance with its beige marble walls and countertop basin, enhanced by a sleek rectangular mirror that reflects light and space. This harmonious combination of textures and materials creates a unified and tranquil living environment.





VIEW | BEDROOM 2



VIEW | BATHROOM 2

BEDROOM 2 | The bedroom exudes an elegant and tranquil ambiance, centered around a luxurious beige puffy bed base that provides both comfort and style. The bed is complemented by a matching beige padded headboard, creating a cohesive and serene look. Flanking the bed are wooden bedside tables topped with sleek marble, adding a touch of sophistication and contrast. At the foot of the bed, a puffy bench offers additional seating and a stylish accent. The wooden wardrobe, with its rich texture and warm tones, completes the room, enhancing its refined and inviting atmosphere. Adjacent to the bedroom, the bathroom exudes modern elegance with its beige marble walls and countertop basin, enhanced by a sleek rectangular mirror that reflects light and space. This harmonious combination of textures and materials creates a unified and tranquil living environment.



BOY'S BEDROOM | The Boy's Bedroom is designed with both functionality and style in mind, featuring a wooden built-in bed base that exudes warmth and simplicity. The room is complemented by a sleek white wardrobe, which provides ample storage while adding a crisp contrast. Extensive wooden shelving lines the walls, offering organized storage for a boy's belongings, from books to personal treasures. A built-in study desk, seamlessly integrated into the design, is paired with a comfortable sofa bench, creating an ideal space for studying and relaxation. This thoughtful arrangement ensures that the room is both practical and inviting, perfectly suited to the needs of a growing boy. Adjacent to the bedroom, the bathroom exudes modern elegance with its marble walls and countertop basin, enhanced by a sleek rectangular mirror that reflects light and space.



VIEW | BOY'S BEDROOM



VIEW | GIRL'S BEDROOM



VIEW | GIRL'S BATHROOM

GIRL'S BEDROOM | The girl's bedroom is a charming and whimsical space designed with a pink color palette that radiates warmth and cheer. A white bed base and matching bedside table provide a crisp, clean contrast to the pink tones throughout the room. The bedside table is adorned with a mushroom-shaped brass table lamp, adding a touch of elegance and a playful twist. A soft pink rug and coordinating pink pouf enhance the cozy atmosphere, while a pink armchair in the corner offers a perfect spot for reading or relaxing. The room is completed with an elegant white study desk, providing a sophisticated and functional area for study and creativity. This combination of elements creates a delightful and inviting space that is both stylish and comfortable.



VIEW | GIRL'S BEDROOM CORNER



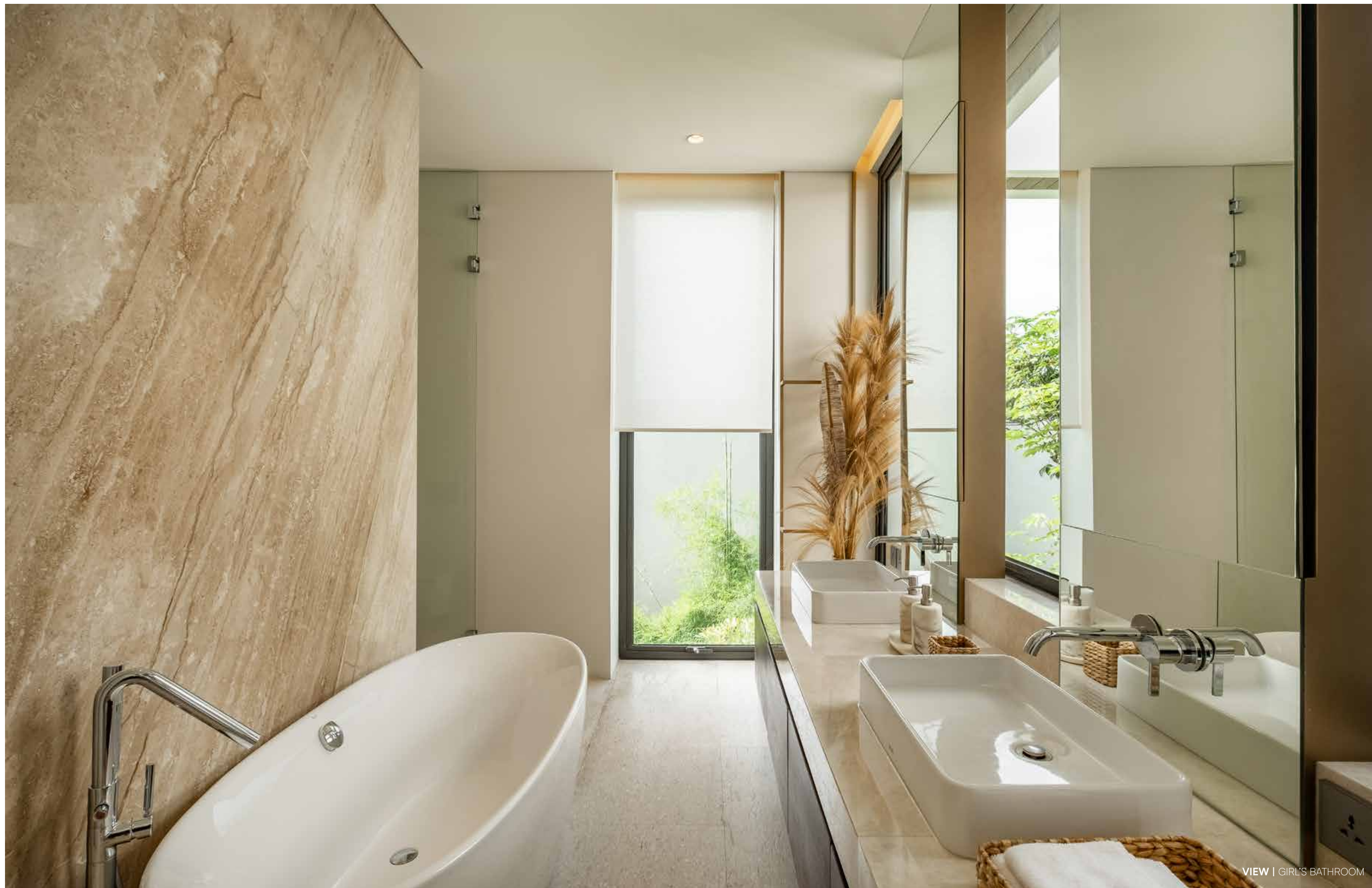
VIEW | GIRL'S WALKING CLOSET



VIEW | GIRL'S WALKING CLOSET



VIEW | GIRL'S WALKING CLOSET



GIRL'S BATHROOM | The bathroom exudes a modern and luxurious feel, featuring a pristine white free-standing bathtub that serves as a stunning centerpiece. Adjacent to it, the floating wash basin area includes a sleek mirror with built-in storage, combining practicality with a touch of elegance. The space is further enhanced by a walk-in wardrobe with rich wood finishes, offering ample storage in a sophisticated setting. A vanity table, paired with a round puffy pouf, completes the area, providing a chic and comfortable spot for grooming and personal care. This harmonious blend of elements creates a serene and functional retreat, perfect for relaxation and daily routines.



VIEW | MASTER BEDROOM

MASTER BEDROOM | The master bedroom is a sanctuary of comfort and elegance, featuring a plush beige puffy bed base paired with a matching beige padded headboard for a cohesive and inviting look. Wooden bedside tables with sleek marble tops add a touch of sophistication and contrast. At the foot of the bed, a puffy bench provides additional seating and a stylish accent. Adjacent to the bed, an armchair with a round side table creates a perfect nook for reading or relaxing. The terrace extends the room's appeal with two stylish armchairs and two round poufs, offering a serene outdoor space for unwinding and enjoying the view. This combination of elements ensures a luxurious and versatile living area.





VIEW | MASTER TERRACE



VIEW | MASTER BEDROOM



VIEW | MASTER BATHROOM

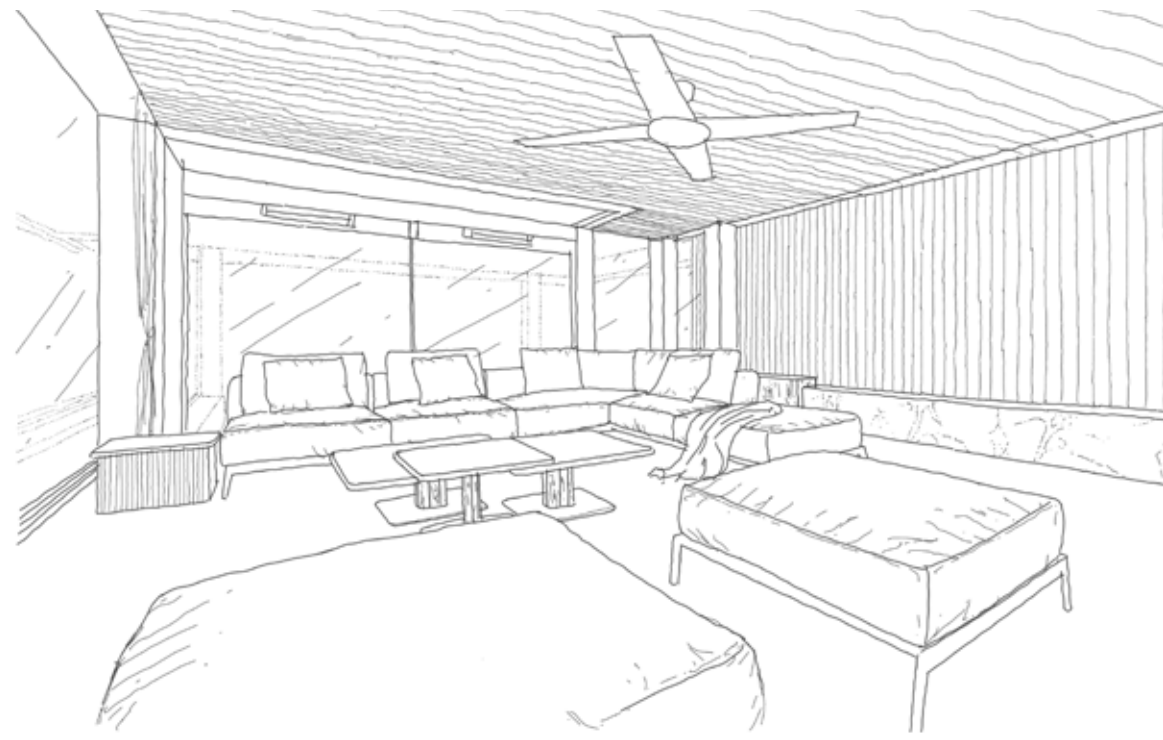


VIEW | MASTER BATHROOM

MASTER BATHROOM | The master bathroom is a stunning blend of elegance and modern design, featuring rich brown marble walls that create a luxurious and timeless backdrop. The focal point of the space is a pristine white free-standing bathtub, complemented by a stylish brass niche on the back that adds a touch of sophistication. The floating wash basin area is both functional and sleek, incorporating a mirrored cabinet with built-in storage to keep essentials neatly organized. This combination of materials and design elements creates a serene and upscale environment, perfect for relaxation and rejuvenation.







VIEW | ROOFTOP SEATING AREA

YOGA & ROOFTOP SEATING AREA | The yoga shala is a tranquil retreat designed to inspire peace and mindfulness. The yoga area offers an open, serene space, perfect for practice, while an L-shaped sofa provides comfortable seating for relaxation or quiet reflection. The room features warm wooden flooring that complements the natural surroundings, enhancing the sense of calm. Overhead, a wooden pergola filters the sunlight, creating dappled light patterns that add to the peaceful ambiance. This harmonious blend of design elements creates a perfect sanctuary for both physical and mental well-being.







For further information :
www.sukyf.com | info@sukyf.com

FELIPE GONZALEZ JIMENEZ DE LA ESPADA

ARCHITECT & DESIGNER

Felipe González Jiménez de la Espada leads an international team of professionals, emphasizing the importance of uniqueness in every moment to create distinctive experiences for clients, regardless of project scale. We translate diverse client wishes into functional and enduringly beautiful creations. With a blend of modern and traditional influences, our focus on quality ensures that luxury and simplicity exude elegance.

Since 1995, Felipe González Jiménez de la Espada has acquired an impressive portfolio of private, corporate and commercial clients in 15 countries around the world. Its headquarters are based in Madrid, Spain.

THE PRACTICE

“The art of listening”. Founded in 1995, Sukyf is an internationally renowned architecture design studio. Recognized for its multidisciplinary approach and the talent of balancing functionality, aesthetics into each one their creations and designs. Sukyf Studio creates bespoke modern minimalist architecture, interiors, furnitures and product designs. The concept of blending exterior, interior and product design skills with context, culture and environment. We feel, we enjoy and the most important part of an studio firm we listen to our clients, spending time with them letting them open themselves to us in order to squeeze until the last drop of their personality in order to translate that into the character of each individual architecture or element that we design, always searching for the perfect fusion on elements for that one singular design.

Our purpose is to shift and exceed the expectations of every single one of our clients either private or corporate ones. Quality as a philosophy, passion on every single line, natural materials, simplicity, elegance and the maximum combination on three element, textures or colors on every creation drives you to an exceptional detail result. Innovation, timeless appeal, proportions and comfort as fundamentals on every design.





NORIS

PRIVATE VILLA

www.sukyf.com || info@sukyf.com